

PRECAST ACCESS RISER MODEL AC1200 with Optional Cast-In Covers

WILKINSON HEAVY PRECAST LIMITED

DUNDAS, ONTARIO

905-628-5611

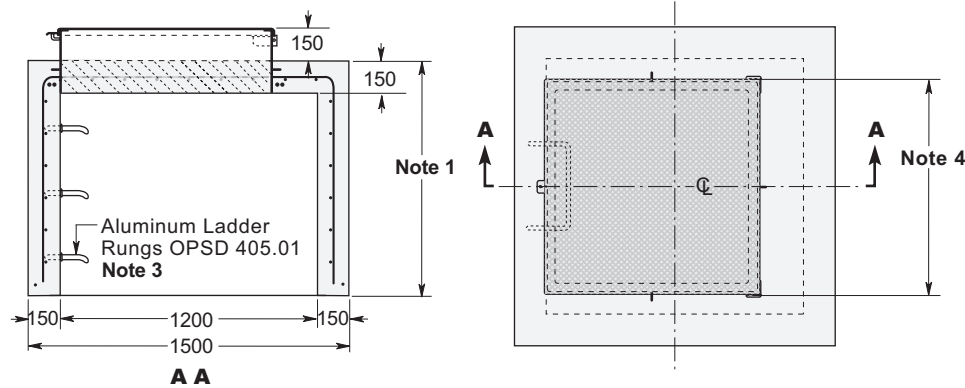
www.wilkinsonheavyprecast.com

CONSTRUCTION DETAILS

Concrete: 35 MPa at 28 days, 5 to 8% Air Entrainment.

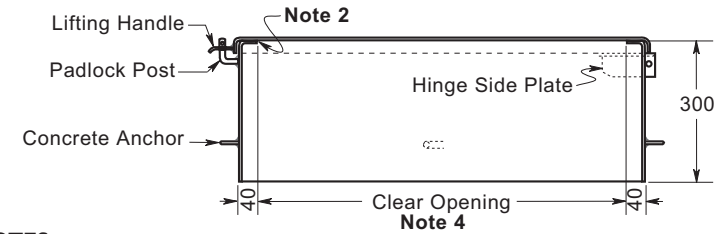
Reinforcing: 10 M bars at 150 mm centres each way in roof and walls.
Extra 15 M bars around roof access opening.
Minimum cover over reinforcing steel - 25 mm.

Weight: 2.0 M - 4640 kg 1.1 M - 2820 kg
1.7 M - 4030 kg .8 M - 2220 kg
1.4 M - 3340 kg .5 M - 1620 kg



DRIP-PROOF AND LOCKABLE FRAME & COVER

- Standard material is 5 mm galvanized steel; this design is also available in aluminum or stainless steel.

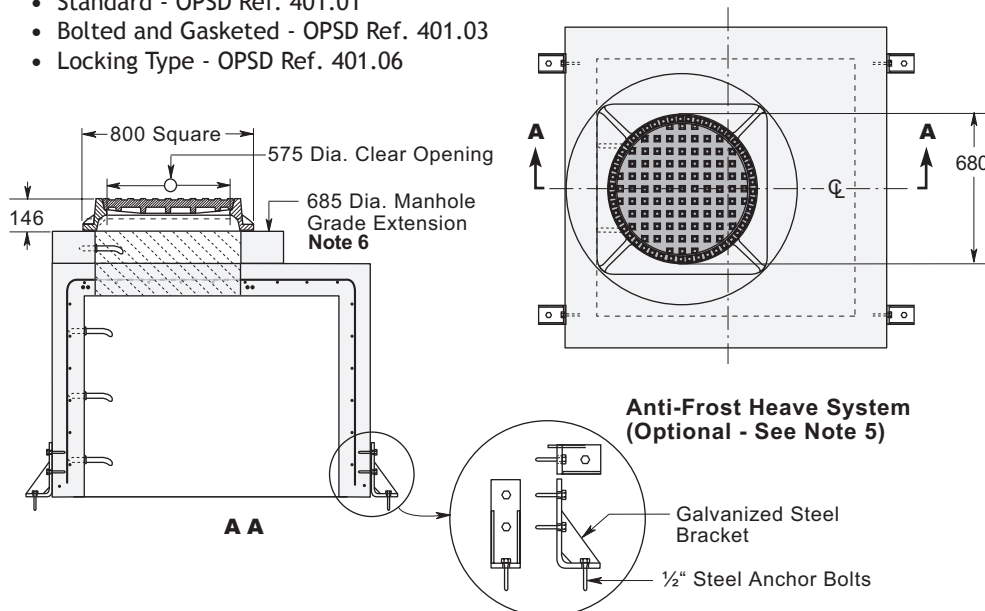


NOTES

1. Available in various heights - see Table of Weights.
2. Neoprene gasket - Optional.
3. Polyethylene coated aluminum ladder rungs available on request. Some designs utilize a custom made ladder to the floor of the chamber.
4. Standard sizes - 600, 750 and 900 mm square.
5. Optional galvanized steel Anti-Frost Heave System ensures a permanently watertight connection with the top of the tank.
6. Cast iron frame can be cast into top slab where grade rings are not required.

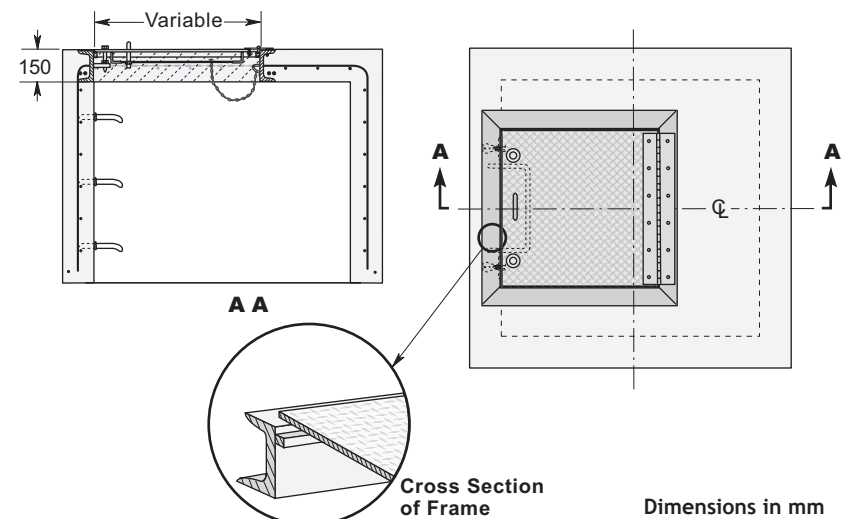
AVAILABLE CAST IRON FRAMES & COVERS

- Standard - OPSD Ref. 401.01
- Bolted and Gasketed - OPSD Ref. 401.03
- Locking Type - OPSD Ref. 401.06



FLUSH TYPE FRAME & COVER

- Available in Stainless Steel or Aluminum.



Dimensions in mm
N.T.S.