

PRECAST ACCESS RISER MODEL AC300 with Optional Covers

WILKINSON HEAVY PRECAST LIMITED

DUNDAS, ONTARIO

905-628-5611

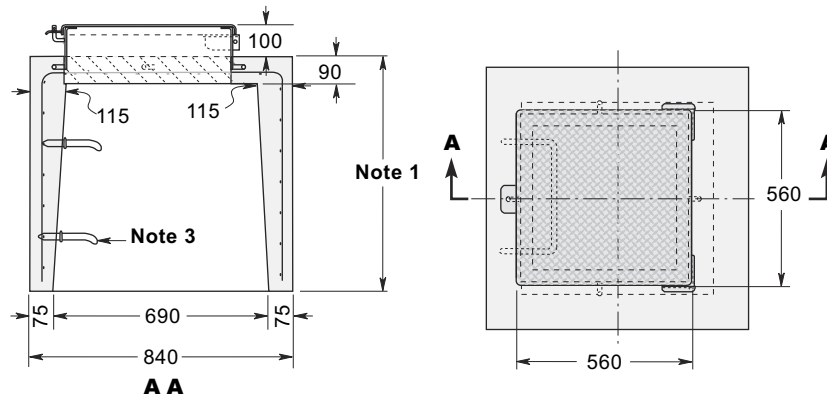
www.wilkinsonheavyprecast.com

CONSTRUCTION DETAILS

Concrete: 35 MPa at 28 days, 5 to 8% Air Entrainment.

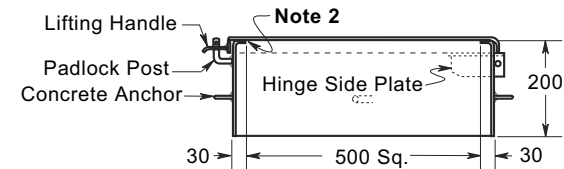
Reinforcing: 4 x 4 6/6 ww mesh in roof and walls.

Weight: 1 M - 725 kg
 .75 M - 575 kg
 .5 M - 415 kg



DRIP-PROOF AND LOCKABLE FRAME & COVER

- Standard material is 5 mm aluminum; this design is also available in Stainless Steel.

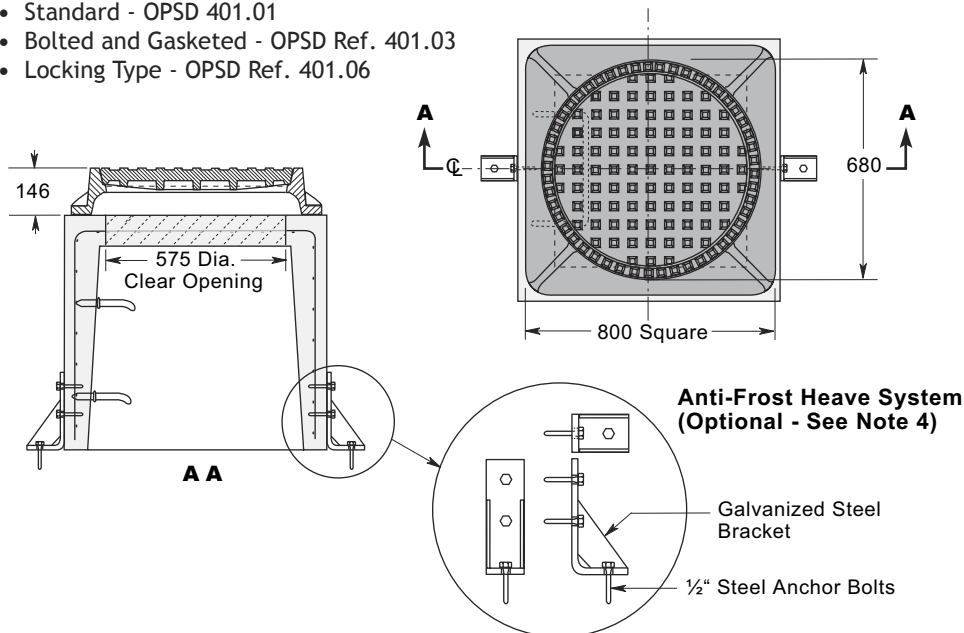


NOTES

1. Available in heights of .5, .75 and 1 metre
2. Neoprene gasket - Optional.
3. Polyethylene coated aluminum ladder rungs available on request. Some designs utilize a custom made ladder to the floor of the chamber.
4. Optional galvanized steel Anti-Frost Heave System ensures a permanently watertight connection with the top of the tank.

AVAILABLE CAST IRON FRAMES & COVERS

- Standard - OPSD 401.01
- Bolted and Gasketed - OPSD Ref. 401.03
- Locking Type - OPSD Ref. 401.06



FLUSH TYPE FRAME & COVER

- Available in Stainless Steel or Aluminum.

