

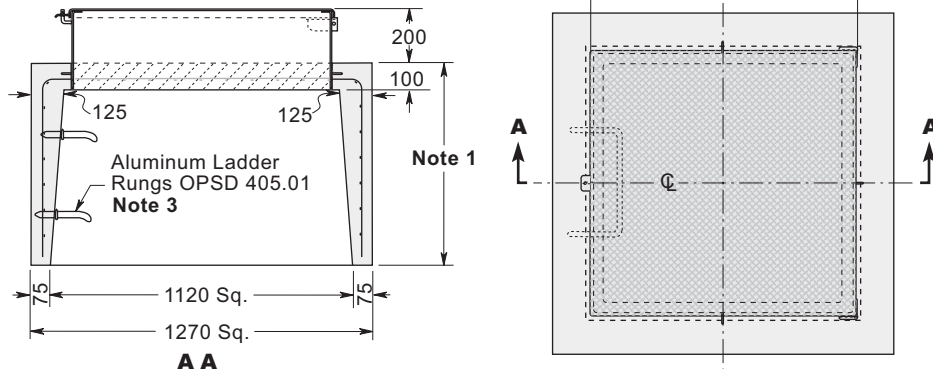
PRECAST ACCESS RISER MODEL AC400 with Optional Cast-In Covers

CONSTRUCTION DETAILS

Concrete: 35 MPa at 28 days, 5 to 8% Air Entrainment.

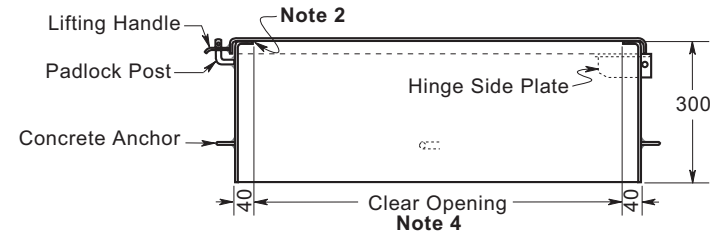
Reinforcing: 4 x 4 6/6 ww mesh in roof and walls.

- Weight:**
- 1.8 M - 2000 kg
 - 1.5 M - 1725 kg
 - 1.2 M - 1500 kg
 - .9 M - 1300 kg
 - .6 M - 1000 kg
 - .3 M - 650 kg



DRIP-PROOF AND LOCKABLE FRAME & COVER

- Standard material is 5 mm galvanized steel; this design is also available in aluminum or stainless steel.

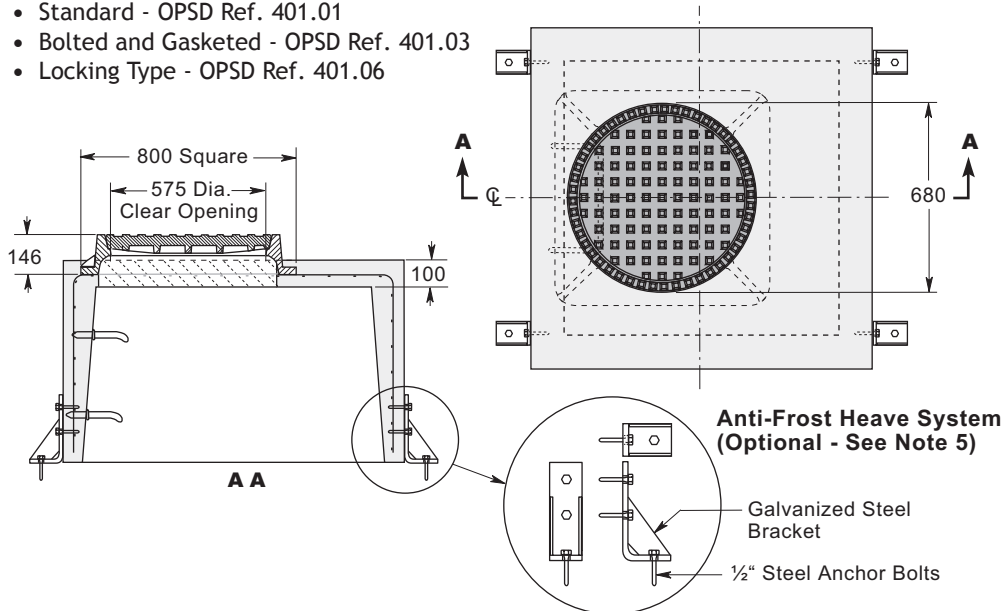


NOTES

1. Available in heights of .3, .6, .9, 1.2, 1.5 and 1.8 metres.
2. Neoprene gasket - Optional.
3. Polyethylene coated aluminum ladder rungs available on request. Some designs utilize a custom made ladder to the floor of the chamber.
4. Standard sizes - 600, 750 and 900 mm square.
5. Optional galvanized steel Anti-Frost Heave System ensures a permanently watertight connection with the top of the tank.

AVAILABLE CAST IRON FRAMES & COVERS

- Standard - OPSD Ref. 401.01
- Bolted and Gasketed - OPSD Ref. 401.03
- Locking Type - OPSD Ref. 401.06



FLUSH TYPE FRAME & COVER

- Available in Stainless Steel or Aluminum.

