

PRECAST DOUBLE CATCH BASIN 115 mm Wall

WILKINSON HEAVY PRECAST LIMITED

DUNDAS, ONTARIO

905-628-5611

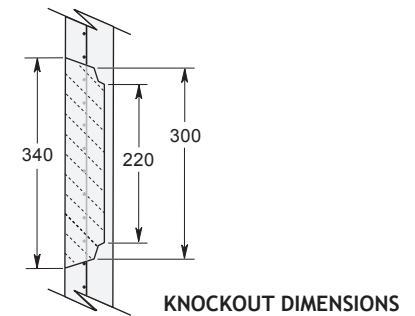
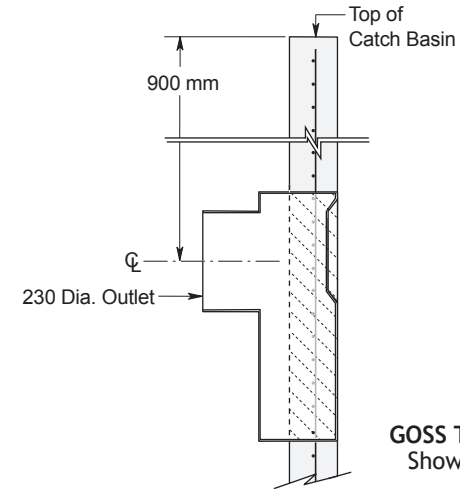
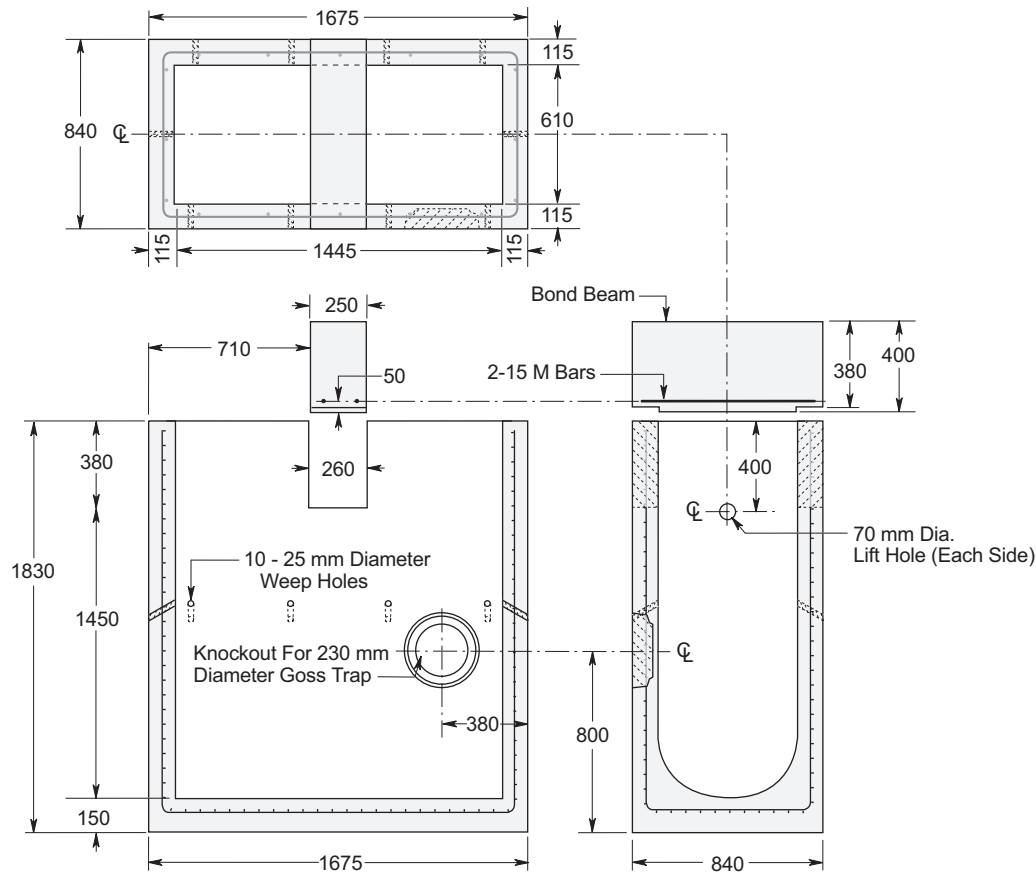
www.wilkinsonheavyprecast.com

CONSTRUCTION DETAILS

Concrete: 35 MPa at 28 Days, 5 to 8% Air Entrainment.

Reinforcing: 4 x 4 6/6 ww mesh in walls and floor.

Weight: 3050 kg including Bond Beam.



Dimensions in mm
N.T.S.