

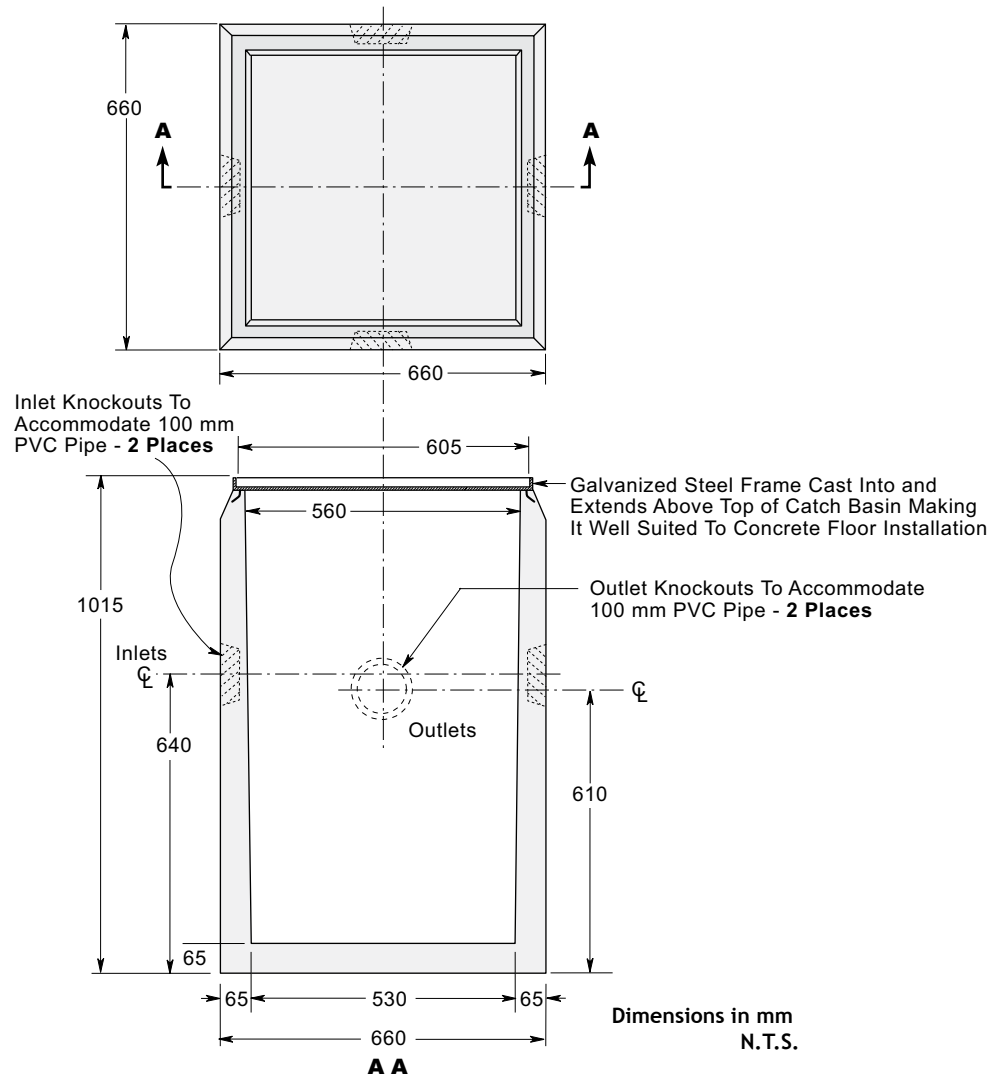
PRECAST GARAGE CATCH BASIN MODEL CB240

560 MM SQUARE

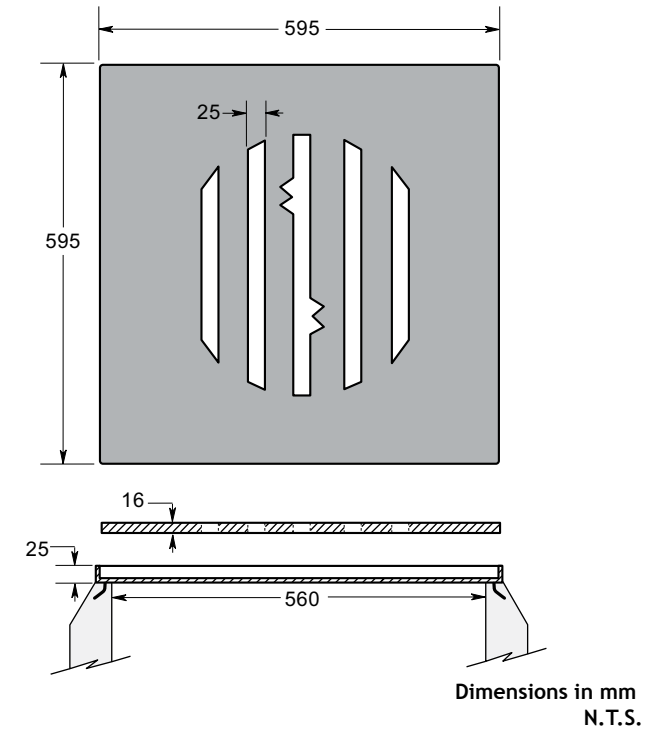
CONSTRUCTION DETAILS

Concrete: 35 MPa at 28 Days, 5 to 8% Air Entrainment.

Weight: Catch Basin & Frame 400 kg
 Steel Grate 45 kg
 Total 445 kg



STEEL PLATE FRAME & COVER
 For Model CB240



NOTES

- Cast-in Frame - 25 x 25 x 6 mm hot dipped galvanized angle.
- Steel Plate Grate - 16 mm hot dipped galvanized steel.

Dimensions in mm N.T.S.