

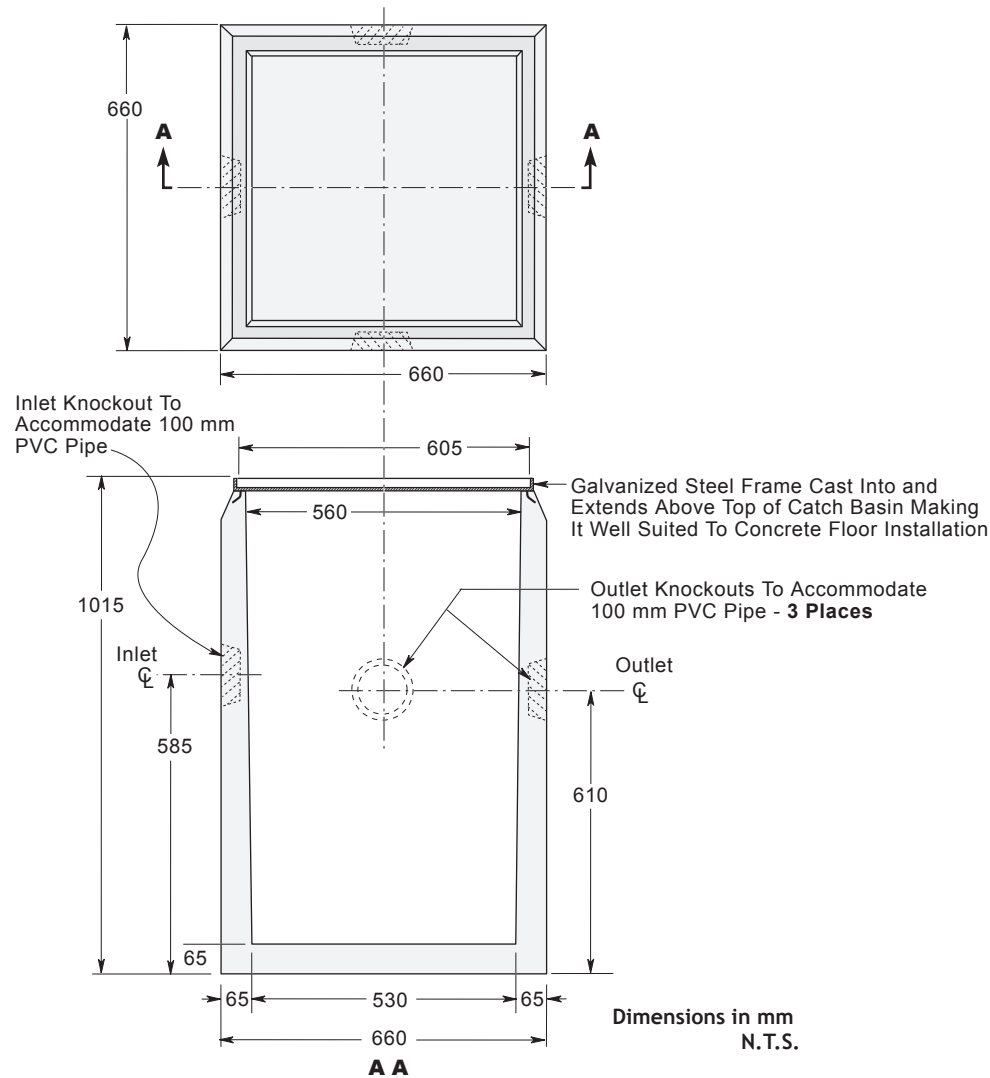
**PRECAST GARAGE CATCH BASIN MODEL CB240**

**560 MM SQUARE**

**CONSTRUCTION DETAILS**

Concrete: 35 MPa at 28 Days, 5 to 8% Air Entrainment.

Weight: Catch Basin & Frame 400 kg  
 Steel Grate 45 kg  
 Total 445 kg



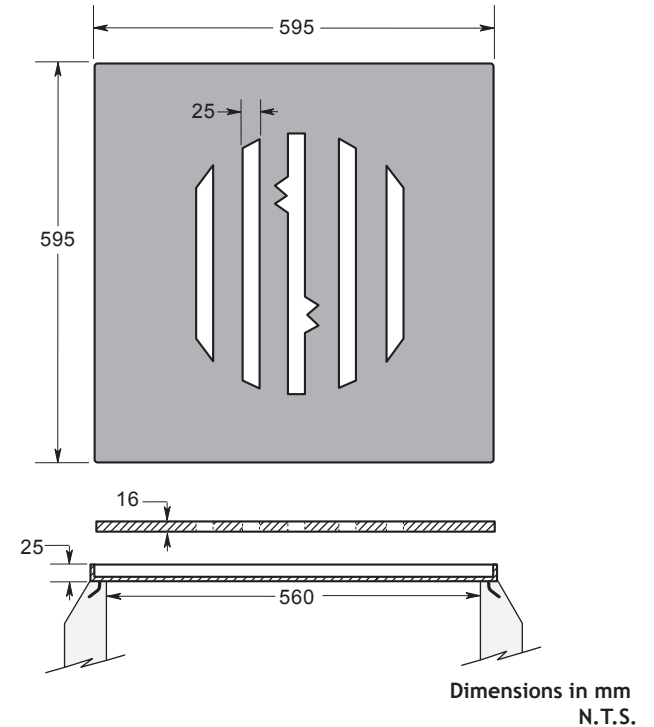
**WILKINSON HEAVY PRECAST LIMITED**

DUNDAS, ONTARIO

905-628-5611

www.wilkinsonheavyprecast.com

**STEEL PLATE FRAME & COVER**  
 For Model CB240



**NOTES**

- Cast-in Frame - 25 x 25 x 6 mm hot dipped galvanized angle.
- Steel Plate Grate - 16 mm hot dipped galvanized steel.