

DISTRIBUTION BOX MODEL DB250

WILKINSON HEAVY PRECAST LIMITED

DUNDAS, ONTARIO

905-628-5611

14 OUTLETS

CONSTRUCTION DETAILS

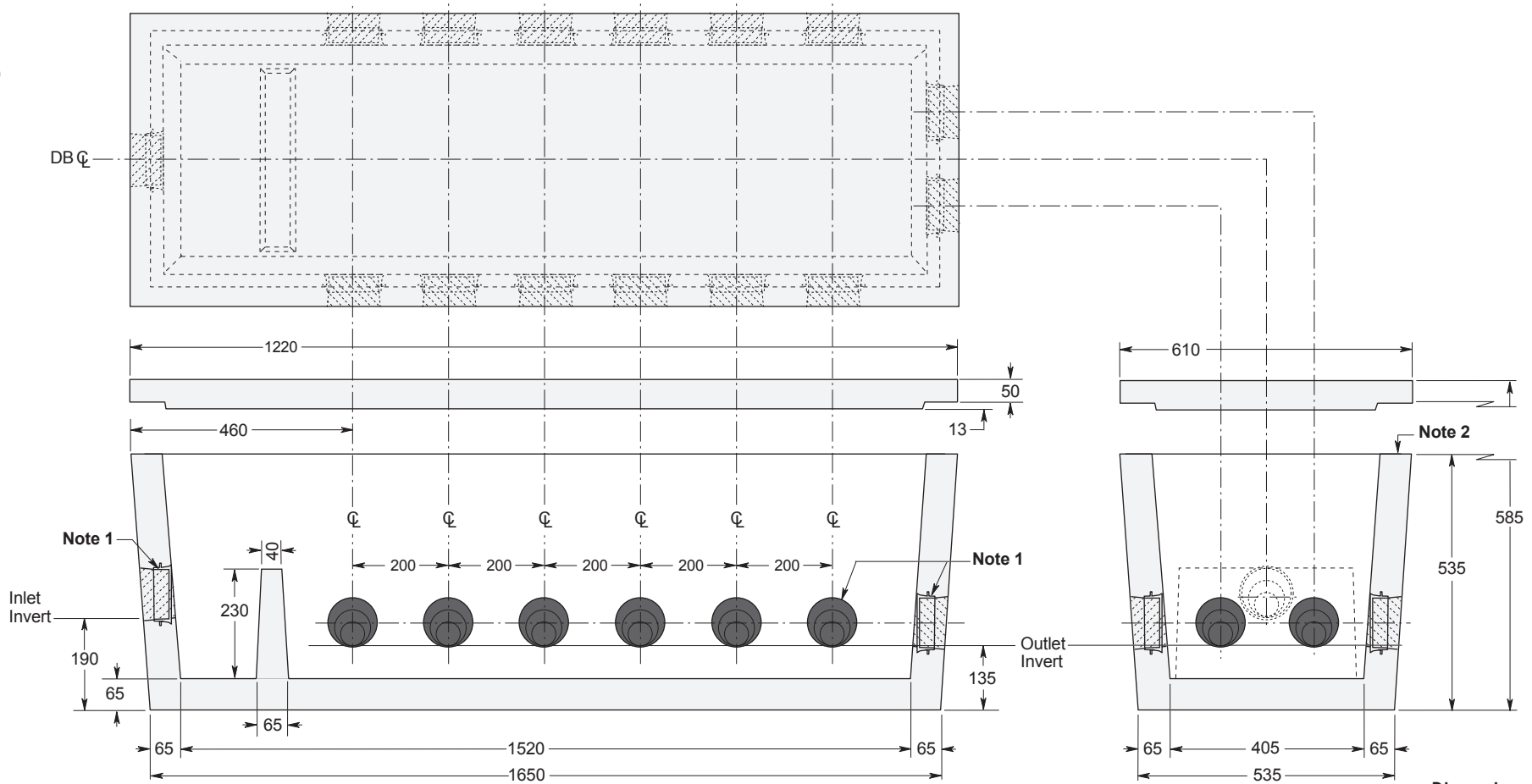
Concrete: 35 MPa at 28 Days, 5 to 8% Air Entrainment.

Weight: 545 kg

NOTES:

1. Flexible watertight pipe connectors to accommodate 100 mm diameter PVC pipe; one inlet, fourteen outlets.
 2. Fibrous mastic sealant ensures a watertight seal.
- This is our largest standard Distribution Box. Larger boxes and/or unique designs are available on special order.

CATALOGUE 2006



Dimensions in mm
N.T.S.