

30,000 LITRE PRECAST WASTEWATER HOLDING TANK MODEL H30H

WILKINSON HEAVY PRECAST LIMITED

DUNDAS, ONTARIO

905-628-5611

www.wilkinsonheavyprecast.com

CLASS H - HEAVY CONSTRUCTION

CONSTRUCTION DETAILS *

Concrete: 35 MPa at 28 Days, 5 to 8% Air Entrainment.

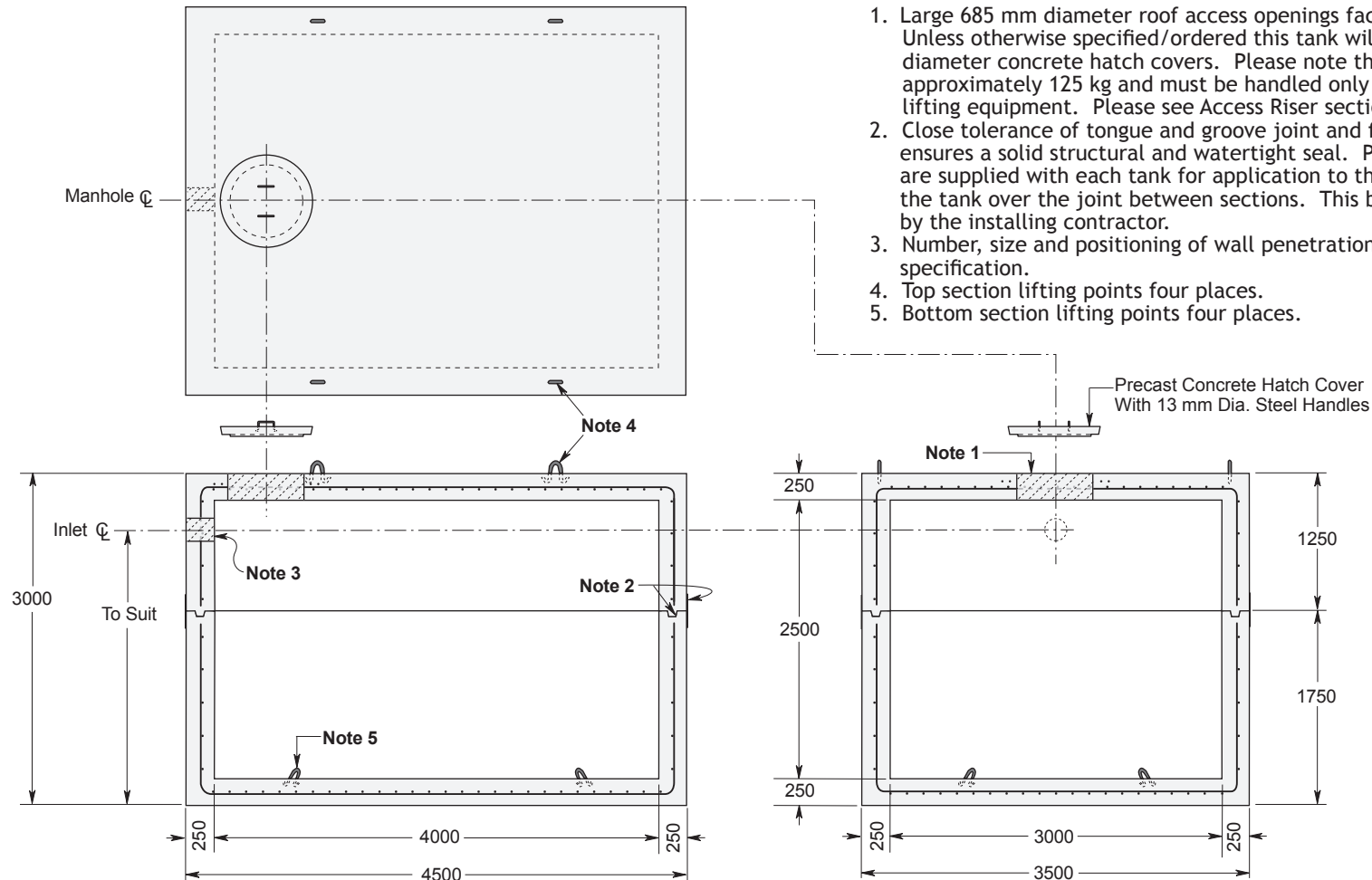
Reinforcing: 10 M bars at 300 mm centres each way in walls.
 10 M bars at 150 mm centres each way in roof and floor.
 Eight extra 15 M bars around roof access opening.
 Minimum cover over reinforcing steel - 25 mm.

Weight: Top Section 18,750 kg
 Bottom Section 23,250 kg
 Total 42,000 kg

Actual Capacity: 12,000 Litres Per Vertical Metre
 30,000 Litres to Underside of Roof.

NOTES

1. Large 685 mm diameter roof access openings facilitate tank maintenance. Unless otherwise specified/ordered this tank will be shipped with 840 mm diameter concrete hatch covers. Please note that each cover weighs approximately 125 kg and must be handled only with suitable mechanical lifting equipment. Please see Access Riser section for available options.
2. Close tolerance of tongue and groove joint and fibrous mastic sealant ensures a solid structural and watertight seal. Primer and Mastic Band are supplied with each tank for application to the external surface of the tank over the joint between sections. This band is to be applied by the installing contractor.
3. Number, size and positioning of wall penetrations to customer's specification.
4. Top section lifting points four places.
5. Bottom section lifting points four places.



Dimensions in mm
 N.T.S.

* Commensurate with a 3 Metre burial over the top slab in firm soil and under an area of vehicular traffic.

For recommended installation procedures refer to Wilkinson Installation Guidelines and Lifting and Assembly Instructions.

WARNING ! IMPROPER INSTALLATION ESPECIALLY IN UNSTABLE SOILS CAN RESULT IN THE STRUCTURAL FAILURE OF THIS PRODUCT