

# 36,000 LITRE PRECAST WASTEWATER HOLDING TANK MODEL H35.7H

WILKINSON HEAVY PRECAST LIMITED

DUNDAS, ONTARIO

905-628-5611

www.wilkinsonheavyprecast.com

## CLASS H - HEAVY CONSTRUCTION

### CONSTRUCTION DETAILS\*

**Concrete:** 35 MPa at 28 Days, 5 to 8% Air Entrainment.

**Reinforcing:** 15 M bars at 300 mm centres each way in walls and floor.  
20 M bars at 200 mm centres each way in top slab.  
12 extra 15 M Bars around roof access opening.  
Minimum cover over reinforcing steel - 25 mm.

**Weight:** Top Slab 12,500 kg  
Tank Section 33,000 kg  
Total Shipping Weight 45,500 kg (Excluding Riser)

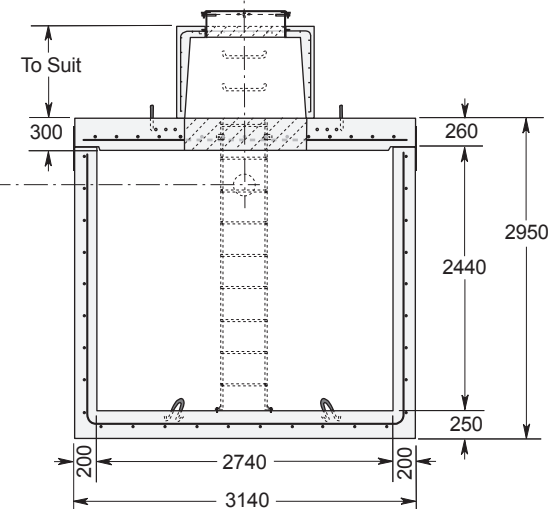
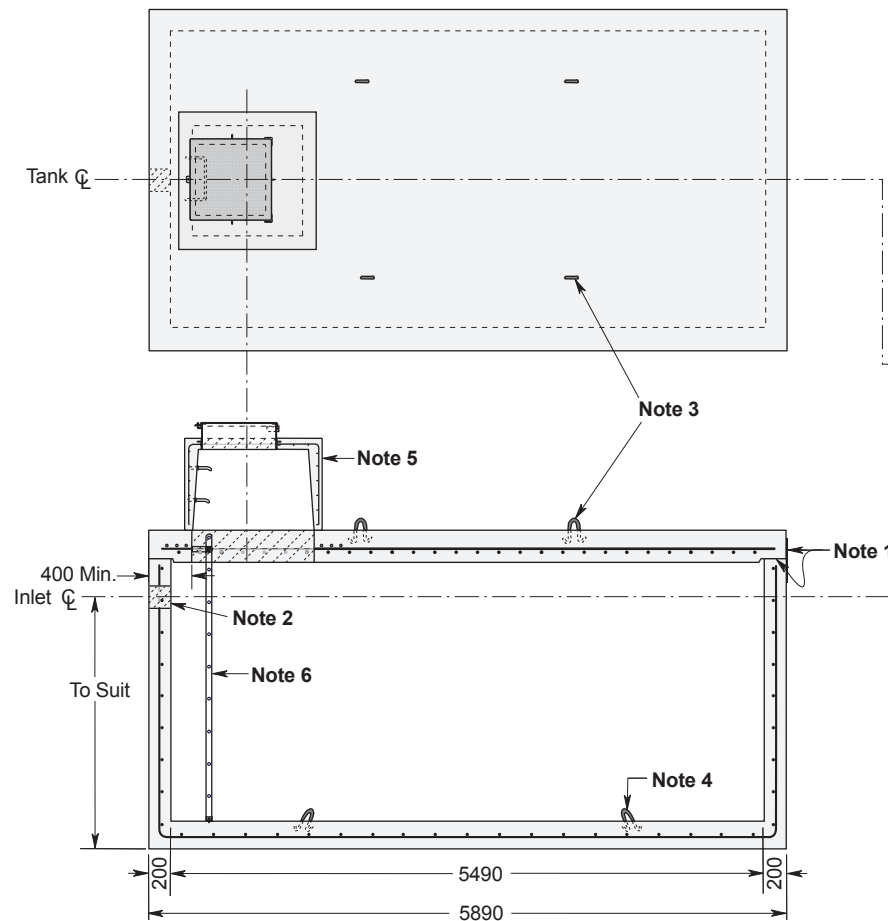
**Actual Capacity:** 15,040 Litres Per Vertical Metre  
35,720 Litres to Underside of Roof.

### NOTES

1. Fibrous mastic sealant ensures a watertight seal. Primer and Mastic Band are supplied with each tank for application to the external surface of the tank over the joint between sections. This band is to be applied by the installing contractor.
2. Number, size and positioning of wall penetrations to customer's specification.
3. Top slab lifting points four places.
4. Tank section lifting points four places.

### Optional Appurtenances Shown On This Drawing:

5. Typical AC400 Access Riser, with galvanized steel or aluminum hinged drip proof cover. Many other types of access risers and hatch covers are available.
6. Galvanized steel, aluminum or stainless steel ladder supplied loose for installation by contractor.



Dimensions in mm  
N.T.S.

\* Commensurate with a 1.8 Metre burial over the top slab in firm soil under an area of vehicular traffic with maximum axle loadings of 4500 kg.

For recommended installation procedures refer to Wilkinson Installation Guidelines and Lifting and Assembly Instructions.

**WARNING ! IMPROPER INSTALLATION ESPECIALLY IN UNSTABLE SOILS CAN RESULT IN THE STRUCTURAL FAILURE OF THIS PRODUCT**