

# 50,000 LITRE PRECAST WASTEWATER HOLDING TANK MODEL H50H

WILKINSON HEAVY PRECAST LIMITED

DUNDAS, ONTARIO

905-628-5611

www.wilkinsonheavyprecast.com

## CLASS H - HEAVY CONSTRUCTION

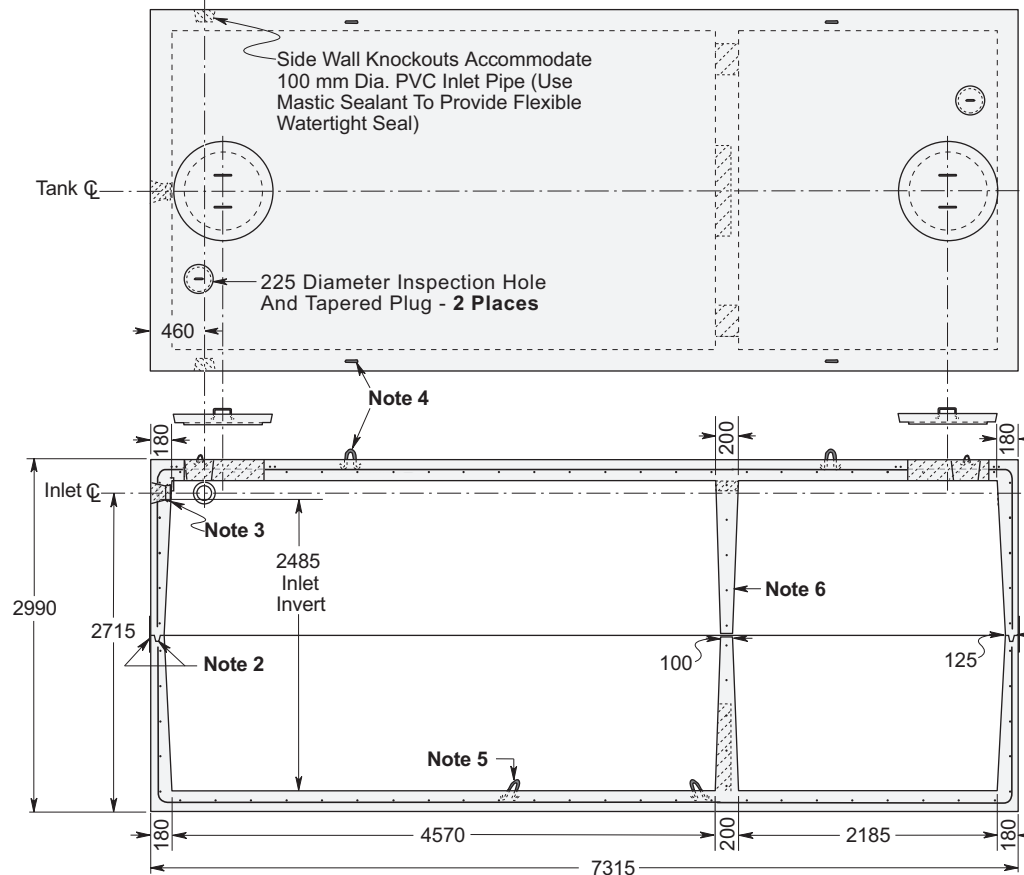
### CONSTRUCTION DETAILS \*

**Concrete:** 35 MPa at 28 Days, 5 to 8% Air Entrainment.

**Reinforcing:** 20 M bars at 300 mm centres each way in roof, walls and floor; horizontally in partition.  
Eight extra 15 M bars around each roof access opening.  
Minimum cover over reinforcing steel - 25 mm.

**Weight:** Top Section 21,700 kg  
Bottom Section 21,700 kg  
Total 43,400 kg

**Actual Capacity:** 18,785 Litres Per Vertical Metre.  
49,400 Litres to Underside of Roof Slab.  
46,680 Litres to Invert of Inlet.

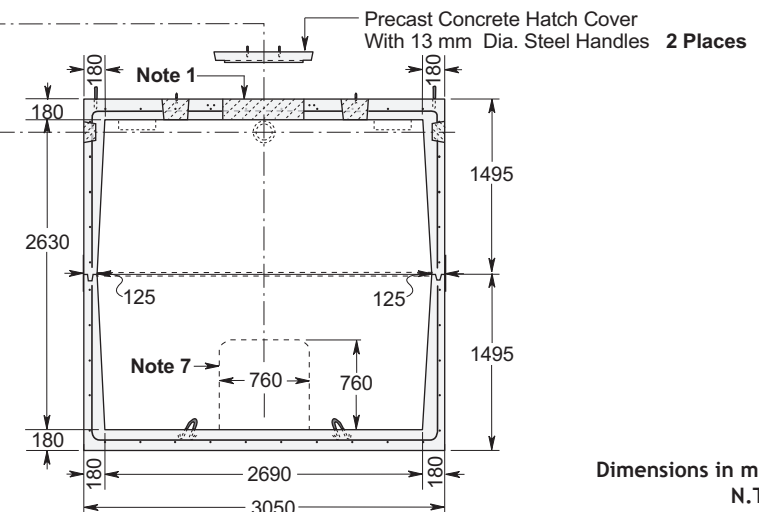


### NOTES

1. Large 685 mm diameter roof access openings facilitate tank maintenance. Unless otherwise specified/ordered this tank will be shipped with 840 mm diameter concrete hatch covers. Please note that each cover weighs approximately 125 kg and must be handled only with suitable mechanical lifting equipment. Please see Access Riser section for available options.
2. Close tolerance of tongue and groove joint and fibrous mastic sealant ensures a solid structural and watertight seal. Primer and Mastic Band are supplied with each tank for application to the external surface of the tank over the joint between sections. This band is to be applied by the installing contractor.
3. Flexible watertight inlet pipe connector to accommodate 100 mm diameter PVC pipe. Size and position of inlet void can be modified at customer's request.
4. Top section lifting points four places.
5. Bottom section lifting points four places.
6. The partition is cast monolithically with the walls and horizontal slab of each section.
7. 760 x 760 mm partition knockout may be removed to allow access between chambers.

### This Tank Is Available With:

- Aluminum ladder rungs to the floor. Consult with the factory as to how this will affect the size and location of the access opening.
- Mechanical connection of the tank sections to enhance water tightness and resistance to frost heave.



Dimensions in mm  
N.T.S.

\* Commensurate with a 1.8 Metre burial over the top slab in firm soil under an area of passenger vehicle parking.

For recommended installation procedures refer to Wilkinson Installation Guidelines and Lifting and Assembly Instructions.

**WARNING ! IMPROPER INSTALLATION ESPECIALLY IN UNSTABLE SOILS CAN RESULT IN THE STRUCTURAL FAILURE OF THIS PRODUCT**