

57,000 LITRE PRECAST CONCRETE WATER HOLDING TANK MODEL H57L

WILKINSON HEAVY PRECAST LIMITED

DUNDAS, ONTARIO

1-800-263-8503

LOW PROFILE

CONSTRUCTION DETAILS *

Concrete: 35 MPa at 28 Days, 5 to 8% Air Entrainment.

Reinforcing: 20 M Bars at 200 mm centres each way in walls and floor.
 600 x 600 20 M corner bars at 200 mm centres around bottom perimeter of tank. (114 places)
 2 Mats of Bars in top slab. Top Mat - 15 M at 300 mm each way.
 Bottom Mat - 20 M at 150 mm (Short Direction)
 - 20 M at 300 mm (Long Direction)

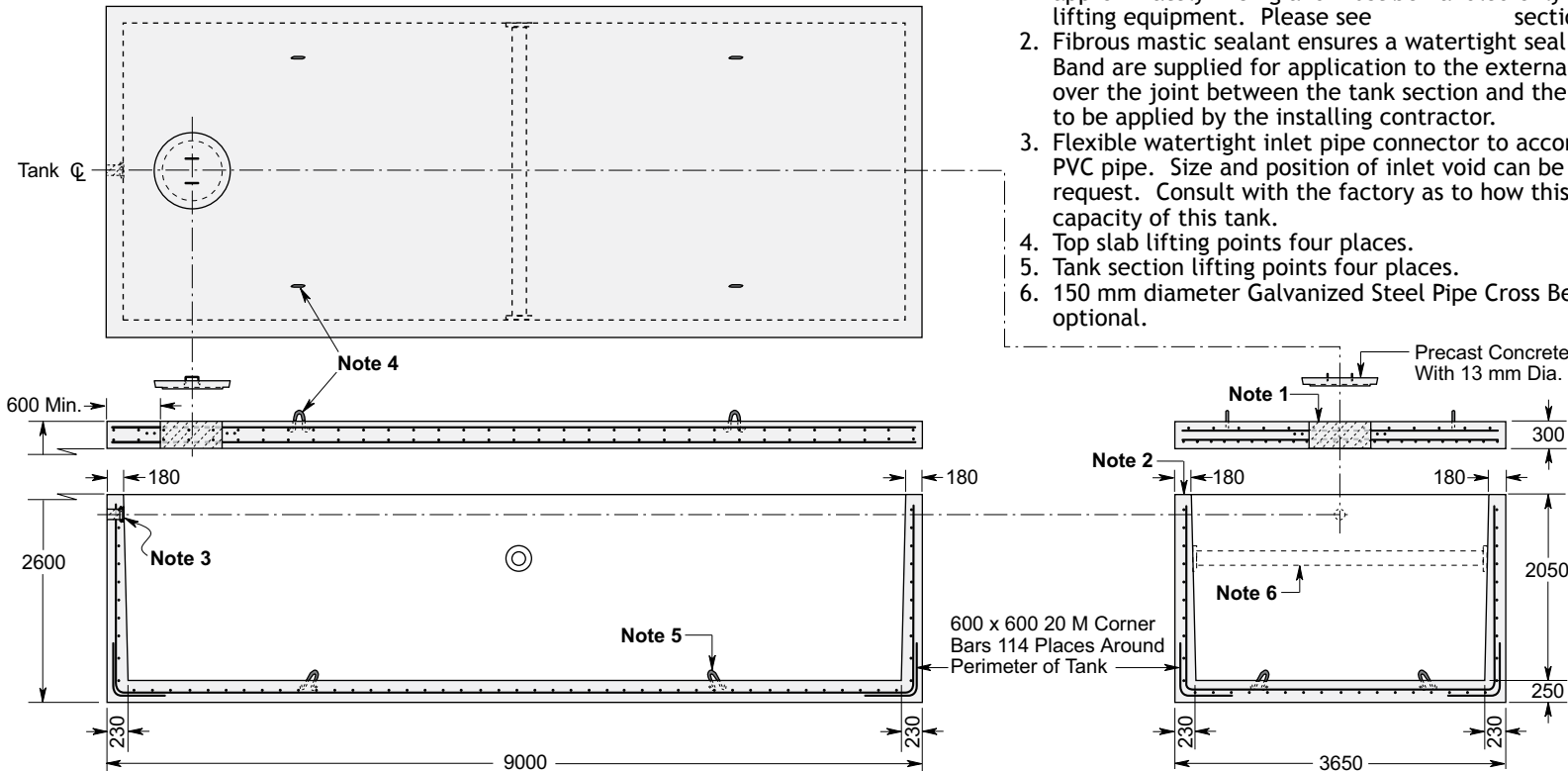
Eight extra 15 M bars around roof access opening.
 Minimum cover over reinforcing steel - 25 mm.

Weight: Top Slab 25,000 kg
 Tank Section 48,000 kg
 Total 73,000 kg

Actual Capacity: 27,832 Litres Per Vertical Metre.
 57,056 Litres to Underside of Roof Slab.

NOTES

1. Large 685 mm diameter roof access opening facilitates tank maintenance. Unless otherwise specified/ordered this tank will be shipped with a 840 mm diameter concrete hatch cover. Please note that the cover weighs approximately 125 kg and must be handled only with suitable mechanical lifting equipment. Please see section for available options.
2. Fibrous mastic sealant ensures a watertight seal. Primer and Mastic Band are supplied for application to the external surface of the tank over the joint between the tank section and the top slab. This band is to be applied by the installing contractor.
3. Flexible watertight inlet pipe connector to accommodate 100 mm diameter PVC pipe. Size and position of inlet void can be modified at customer's request. Consult with the factory as to how this will affect the liquid capacity of this tank.
4. Top slab lifting points four places.
5. Tank section lifting points four places.
6. 150 mm diameter Galvanized Steel Pipe Cross Beam. Stainless steel is optional.



Dimensions in mm
 N.T.S.

*Product designed for a Maximum 1.8 Metre burial over the top slab in firm soil away from any area of vehicular traffic.

For recommended installation procedures refer to Wilkinson