

3300 LITRE PRECAST WASTEWATER HOLDING TANK MODEL H3.3L

WILKINSON HEAVY PRECAST LIMITED

DUNDAS, ONTARIO

905-628-5611

www.wilkinsonheavyprecast.com

LOW PROFILE

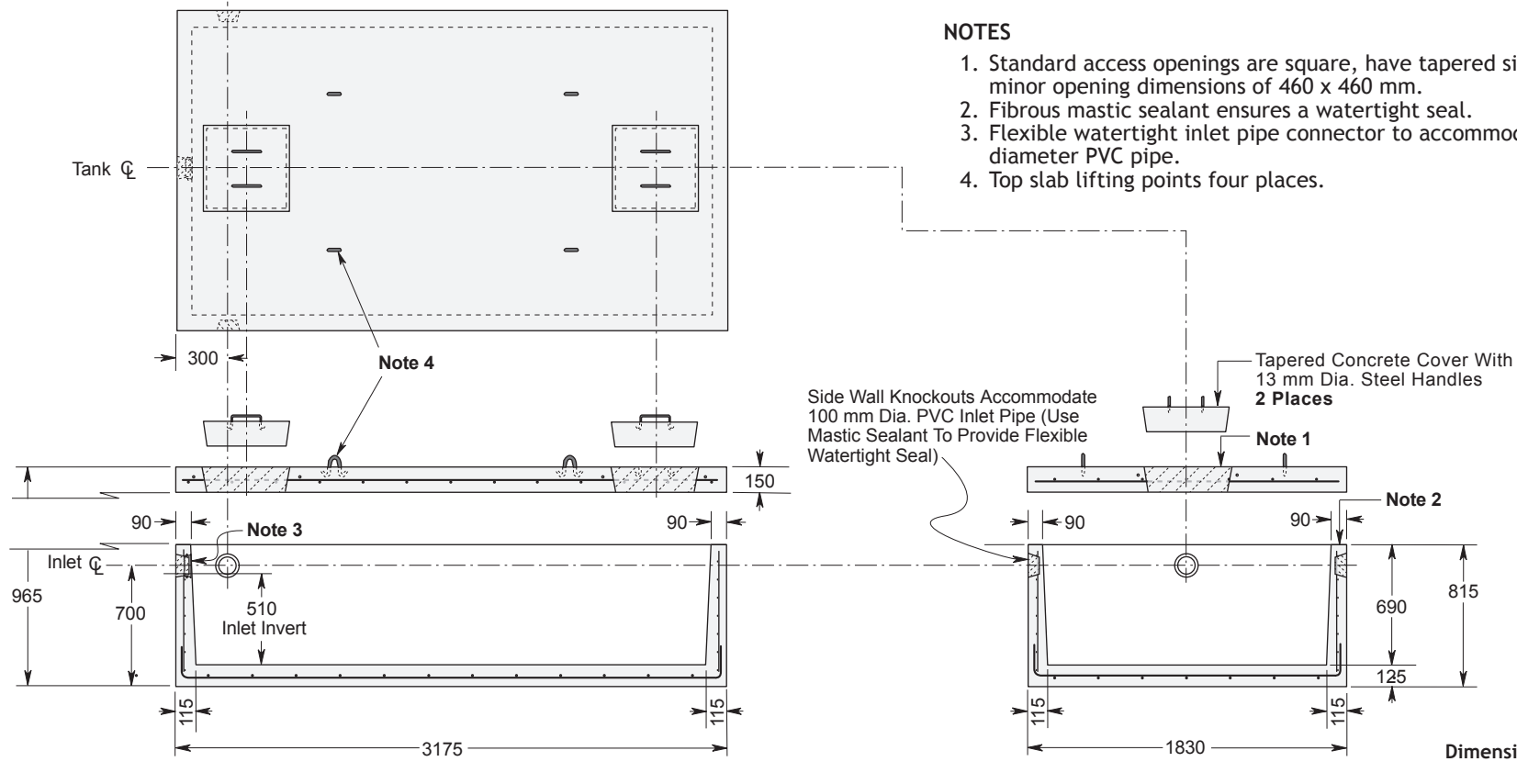
CONSTRUCTION DETAILS *

Concrete: 35 MPa at 28 Days, 5 to 8% Air Entrainment.

Reinforcing: 4 x 4 6/6 ww mesh in walls.
 10 M bars at 250 mm centres each way in top slab and floor.
 Four extra 15 M bars around each roof access opening.
 Minimum cover over reinforcing steel - 25 mm.

Weight: Top Slab 2170 kg
 Tank Section 3420 kg
 Total 5590 kg

Actual Capacity: 4832 Litres Per Vertical Metre.
 3334 Litres to Underside of Roof Slab.
 2464 Litres to Invert of Inlet.



NOTES

1. Standard access openings are square, have tapered sides and minor opening dimensions of 460 x 460 mm.
2. Fibrous mastic sealant ensures a watertight seal.
3. Flexible watertight inlet pipe connector to accommodate 100 mm diameter PVC pipe.
4. Top slab lifting points four places.

* Commensurate with a 1 Metre burial over the top slab in firm soil under an area of vehicular traffic.

For recommended installation procedures refer to Wilkinson Installation Guidelines.

WARNING ! IMPROPER INSTALLATION ESPECIALLY IN UNSTABLE SOILS CAN RESULT IN THE STRUCTURAL FAILURE OF THIS PRODUCT