

# 13,600 LITRE TWO COMPARTMENT PRECAST SEPTIC TANK MODEL S13.6L

**WILKINSON HEAVY PRECAST LIMITED**

DUNDAS, ONTARIO

905-628-5611

[www.wilkinsonheavyprecast.com](http://www.wilkinsonheavyprecast.com)

## LOW PROFILE

### CONSTRUCTION DETAILS \*

**Concrete:** 35 MPa at 28 Days, 5 to 8% Air Entrainment.

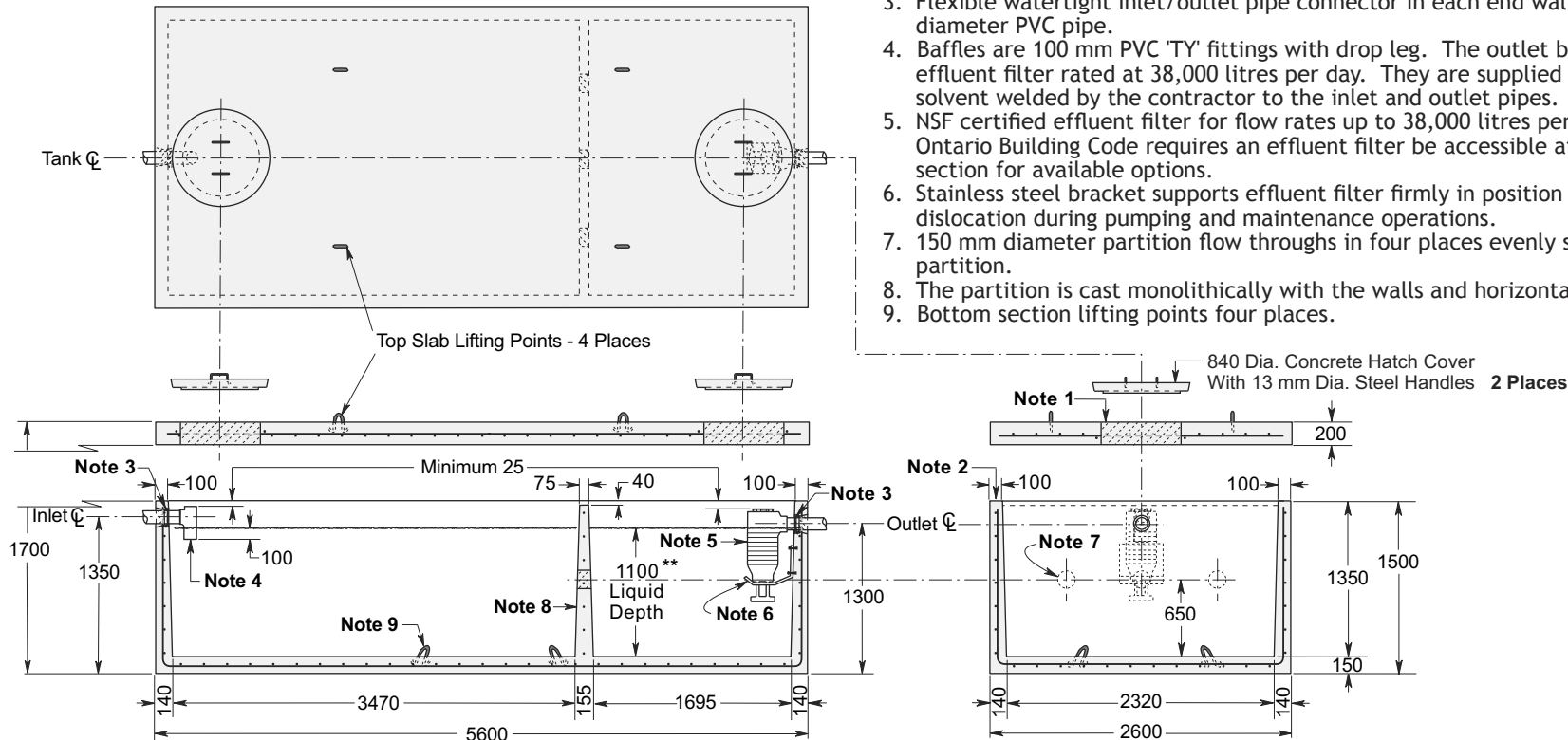
**Reinforcing:** 10 M bars at 200 mm centres each way in walls and floor; horizontally in partition.  
10 M bars at 200 mm centres each way in top slabs.  
Four extra 15 M bars around roof access opening.  
Minimum cover over reinforcing steel - 25 mm.

**Weight:** Top Slab 7100 kg  
Tank Section 12,620 kg  
Total 19,720 kg

**Actual Capacity:** 12,378 Litres Per Vertical Metre.  
16,710 Litres to Underside of Roof Slab.  
13,615 Litres to Invert of Outlet.

### NOTES

1. Large 685 mm diameter roof access openings facilitate tank and filter maintenance. Please note that each cover weighs approximately 125 kg and must be handled only with suitable mechanical lifting equipment. Access extensions may be required to meet Ontario Building Code requirements. See Access Riser section for available options.
2. Fibrous mastic sealant ensures a watertight seal. Primer and Mastic Band are supplied with each tank for application to the external surface of the tank over the joint between the tank section and the top slab. This band is to be applied by the installing contractor.
3. Flexible watertight inlet/outlet pipe connector in each end wall accommodates 100 mm diameter PVC pipe.
4. Baffles are 100 mm PVC 'TY' fittings with drop leg. The outlet baffle has an integral effluent filter rated at 38,000 litres per day. They are supplied loose and meant to be solvent welded by the contractor to the inlet and outlet pipes.
5. NSF certified effluent filter for flow rates up to 38,000 litres per day. Note that the Ontario Building Code requires an effluent filter be accessible at grade. See Access Riser section for available options.
6. Stainless steel bracket supports effluent filter firmly in position to prevent damage or dislocation during pumping and maintenance operations.
7. 150 mm diameter partition flow throughs in four places evenly spaced across the partition.
8. The partition is cast monolithically with the walls and horizontal slab of each section.
9. Bottom section lifting points four places.



Dimensions in mm  
N.T.S.

\* Commensurate with a 1.2 Metre burial over the top slab in firm soil away from any area of vehicular traffic.

\*\* PLEASE NOTE: While this tank conforms to the requirements of CSA-B66 for a septic tank the working liquid depth is less than the 1200 mm required by the Ontario Building Code and should be used only where rock or high ground water levels exist. OBC 8.2.2.3 (8).

For recommended installation procedures refer to Wilkinson Installation Guidelines.

**WARNING ! IMPROPER INSTALLATION ESPECIALLY IN UNSTABLE SOILS CAN RESULT IN THE STRUCTURAL FAILURE OF THIS PRODUCT**