

# 8800 LITRE TWO COMPARTMENT PRECAST SEPTIC TANK MODEL S8.8L

WILKINSON HEAVY PRECAST LIMITED

DUNDAS, ONTARIO

905-628-5611

www.wilkinsonheavyprecast.com

## LOW PROFILE

### CONSTRUCTION DETAILS \*

**Concrete:** 35 MPa at 28 Days, 5 to 8% Air Entrainment.

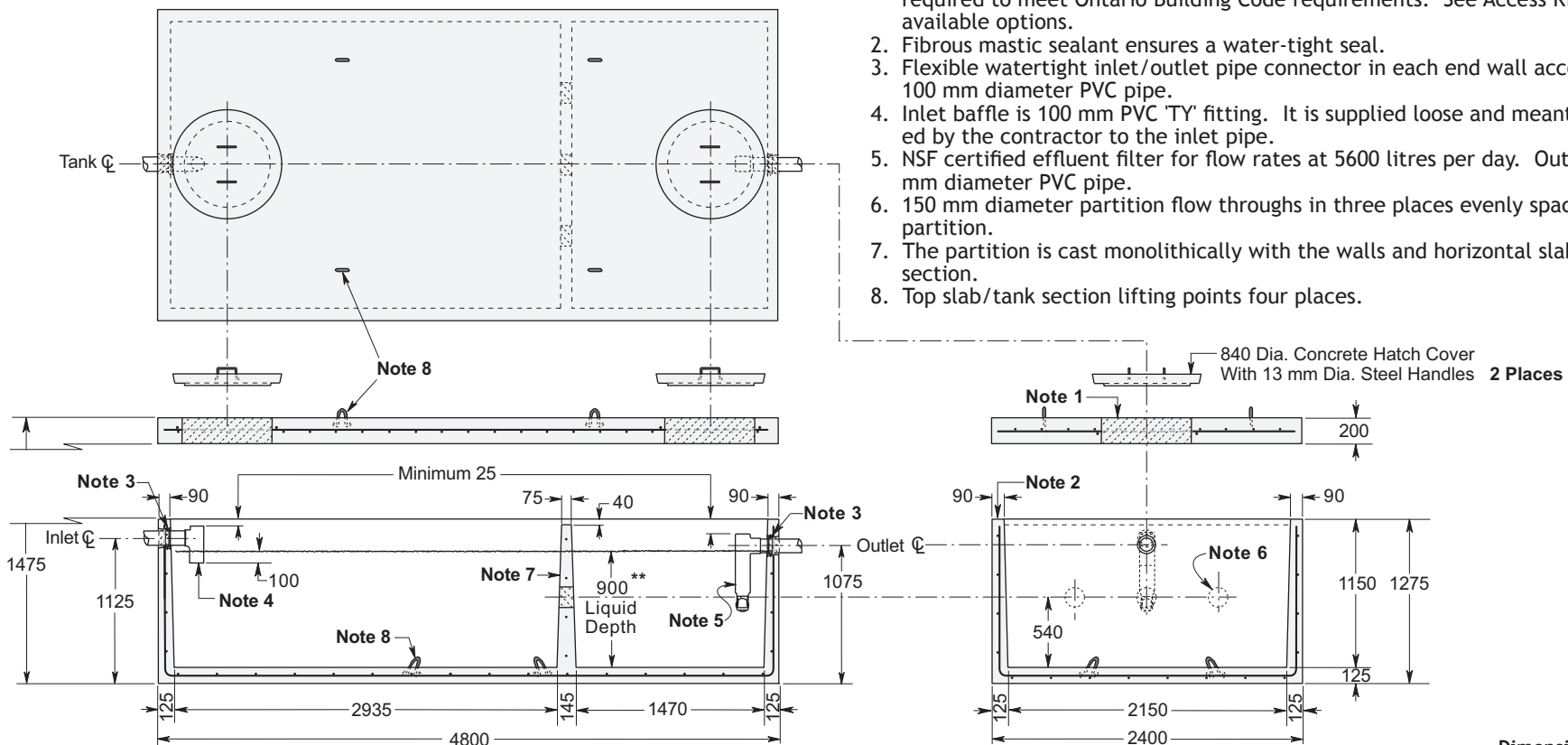
**Reinforcing:** 10 M bars at 300 mm centres each way in walls and floor; horizontally in partition.  
10 M bars at 200 mm centres each way in top slab.  
Four extra 15 M bars around roof access opening.  
Minimum cover over reinforcing steel - 25 mm.

**Weight:** Top Slab 5620 kg  
Tank Section 8420 kg  
Total 14,040 kg

**Actual Capacity:** 9778 Litres Per Vertical Metre.  
11,245 Litres to Underside of Roof Slab.  
8800 Litres to Invert of Outlet.

### NOTES

1. Large 685 mm diameter roof access openings facilitate tank and filter maintenance. Please note that each cover weighs approximately 125 kg and must be handled only with suitable mechanical lifting equipment. Access extensions may be required to meet Ontario Building Code requirements. See Access Riser section for available options.
2. Fibrous mastic sealant ensures a water-tight seal.
3. Flexible watertight inlet/outlet pipe connector in each end wall accommodates 100 mm diameter PVC pipe.
4. Inlet baffle is 100 mm PVC 'TY' fitting. It is supplied loose and meant to be cemented by the contractor to the inlet pipe.
5. NSF certified effluent filter for flow rates at 5600 litres per day. Outlet accepts 100 mm diameter PVC pipe.
6. 150 mm diameter partition flow throughs in three places evenly spaced across the partition.
7. The partition is cast monolithically with the walls and horizontal slab of each section.
8. Top slab/tank section lifting points four places.



Dimensions in mm  
N.T.S.

\* Commensurate with a 1.2 Metre burial over the top slab in firm soil away from any area of vehicular traffic.

\*\* PLEASE NOTE: While this tank conforms to the requirements of CSA-B66 for a septic tank the working liquid depth is less than the 1200 mm required by the Ontario Building Code and should be used only where rock or high ground water levels exist. OBC 8.2.2.3 (8).

For recommended installation procedures refer to Wilkinson Installation Guidelines.

**WARNING ! IMPROPER INSTALLATION ESPECIALLY IN UNSTABLE SOILS CAN RESULT IN THE STRUCTURAL FAILURE OF THIS PRODUCT**