

## ROUND MANHOLE SECTIONS

WILKINSON HEAVY PRECAST LIMITED

DUNDAS, ONTARIO

905-628-5611

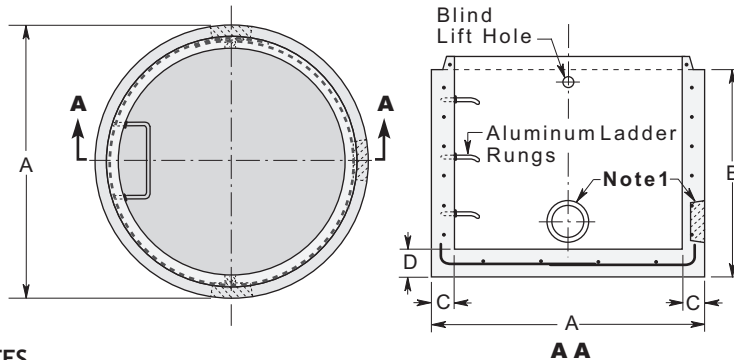
www.wilkinsonheavyprecast.com

**MONO BASE - 1200 & 2400 mm Diameter Manholes**  
**CAST IN BASE - 1500, 1800 & 3000 mm Diameter Manholes.**

### CONSTRUCTION DETAILS

**Concrete:** 35 MPa at 28 Days, 5 to 8% Air Entrainment.

**Reinforcing:** Refer to Dimension Chart



### NOTES

1. All Mono Bases may be made to order with wall voids to suit a wide variety of pipe locations and diameters.
2. Standard knockout locations for 1200 mm diameter mono bases are at 12, 3 and 6 o'clock.

### DIMENSION CHART

### METRIC MEASURE IN MILLIMETERS

NOMINAL MANHOLE I. D.	1200	1500	1800	2400	3000	
A. Outside Diameter	1470	1830	2185	2895	3555	
B. Outside Height	1065	2135*	1830*	1830 or 2440	2745*	
C. Wall Thickness	125	150	180	230	255	
D. Floor Thickness	150	200	255	305	305	
Minimum Reinforcing	Area of Circumferential Steel /Vert. Metre of wall	250 Sq. mm	315 Sq. mm	378 Sq. mm	507 Sq. mm	630 Sq. mm
	Floor Bar Size/Centres each way	15M/300	15M/300	15M/300	15M/300	15M/300
Weight In kgs	1830	5125	6660	11,970 and 14,800	20,000	

Dimensions in mm  
N.T.S.

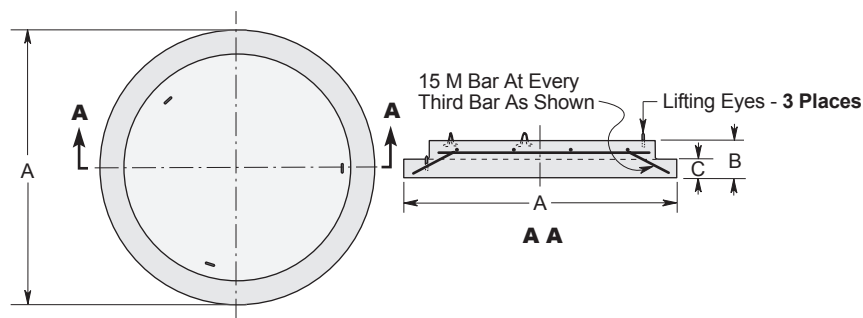
\* Maximum one piece height, other heights available.

**BASE SLABS for 1200, 1500, 1800, 2400 & 3000 mm Diameter Manholes**  
**OPSD Ref. - 701.03, 701.04, 701.05 and 701.06**

### CONSTRUCTION DETAILS

**Concrete:** 35 MPa at 28 Days, 5 to 8% Air Entrainment.

**Reinforcing:** 15M bars at 300 mm centres each way.



Dimensions in mm  
N.T.S.

### DIMENSION CHART

### METRIC MEASURE IN MILLIMETERS

NOMINAL MANHOLE I. D.	1200	1500	1800	2400	3000
A. Outside Diameter	1470	1830	2185	2895	3555
B. Total Thickness	200	305	305	305	305
C. Shoulder to Bottom	100	185	185	180	140
Weight In kgs	800	1850	2650	4600	6800

**WARNING ! IMPROPER INSTALLATION ESPECIALLY IN UNSTABLE SOILS CAN RESULT IN THE STRUCTURAL FAILURE OF THIS PRODUCT**