

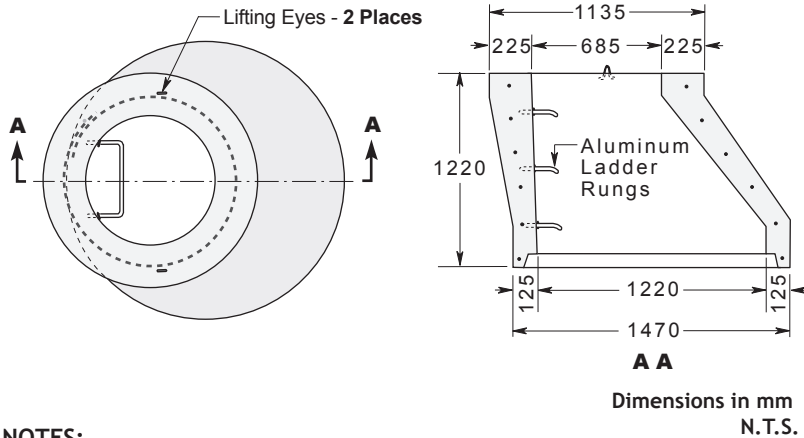
ROUND MANHOLE SECTIONS

TAPER TOPS For 1200 mm Diameter Manholes

CONSTRUCTION DETAILS

Concrete: 35 MPa at 28 Days, 5 to 8% Air Entrainment.

Reinforcing: 250 square mm of circumferential steel per vertical metre.



NOTES:

- Approximate Weight: 1800 kg

WILKINSON HEAVY PRECAST LIMITED

DUNDAS, ONTARIO

905-628-5611

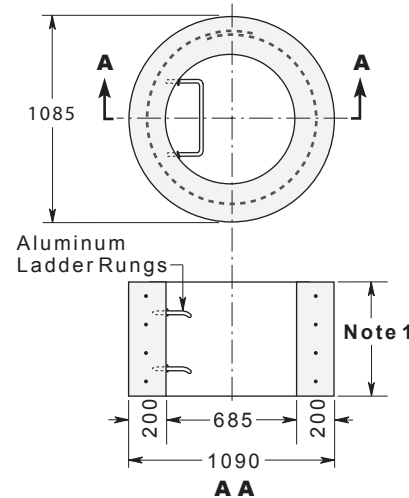
www.wilkinsonheavyprecast.com

GRADE RINGS - 685 mm I.D. OPSD Ref. - 704.01

CONSTRUCTION DETAILS

Concrete: 35 MPa at 28 Days, 5 to 8% Air Entrainment.

Reinforcing: 250 square mm of Circumferential Steel per vertical metre.



NOTES

1. Available in standard heights of 50, 75, 150, 300 and 600 mm.
- Approximate Weight:
 - 50 mm High - 72 kg
 - 75 mm High - 106 kg
 - 150 mm High - 213 kg
 - 300 mm High - 420 kg
 - 600 mm High - 837 kg

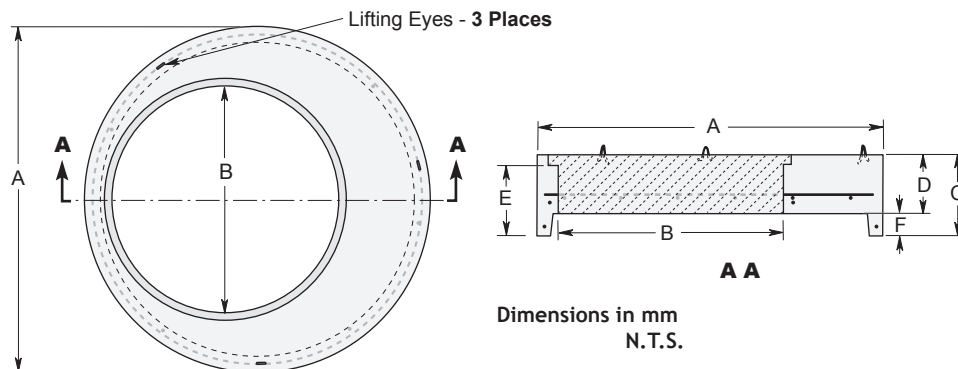
Dimensions in mm
N.T.S.

TRANSITION SLABS for Reducing 3000, 2400, 1800 & 1500 mm Diameter Manholes to 1200 mm Diameter

CONSTRUCTION DETAILS

Concrete: 35 MPa at 28 Days, 5 to 8% Air Entrainment.

Reinforcing: As per the applicable OPSD Spec.



DIMENSION CHART	METRIC MEASURE IN MM			
Nominal Manhole I. D.	1500	1800	2400	3000
A. Outside Diameter	1830	2185	2895	3555
B. Access Diameter	1220	1220	1220	1220
C. Overall Height	425	425	430	470
D. Minimum Slab Thickness	305	305	305	305
E. Assembled Height	325	325	330	370
F. Joint Height	120	120	125	165
Weight In kg	1050	1925	4175	6925

WARNING ! IMPROPER INSTALLATION ESPECIALLY IN UNSTABLE SOILS CAN RESULT IN THE STRUCTURAL FAILURE OF THIS PRODUCT