

# 13,700 LITRE PRECAST WASTEWATER HOLDING TANK MODEL H13.7S

WILKINSON HEAVY PRECAST LIMITED

DUNDAS, ONTARIO

905-628-5611

www.wilkinsonheavyprecast.com

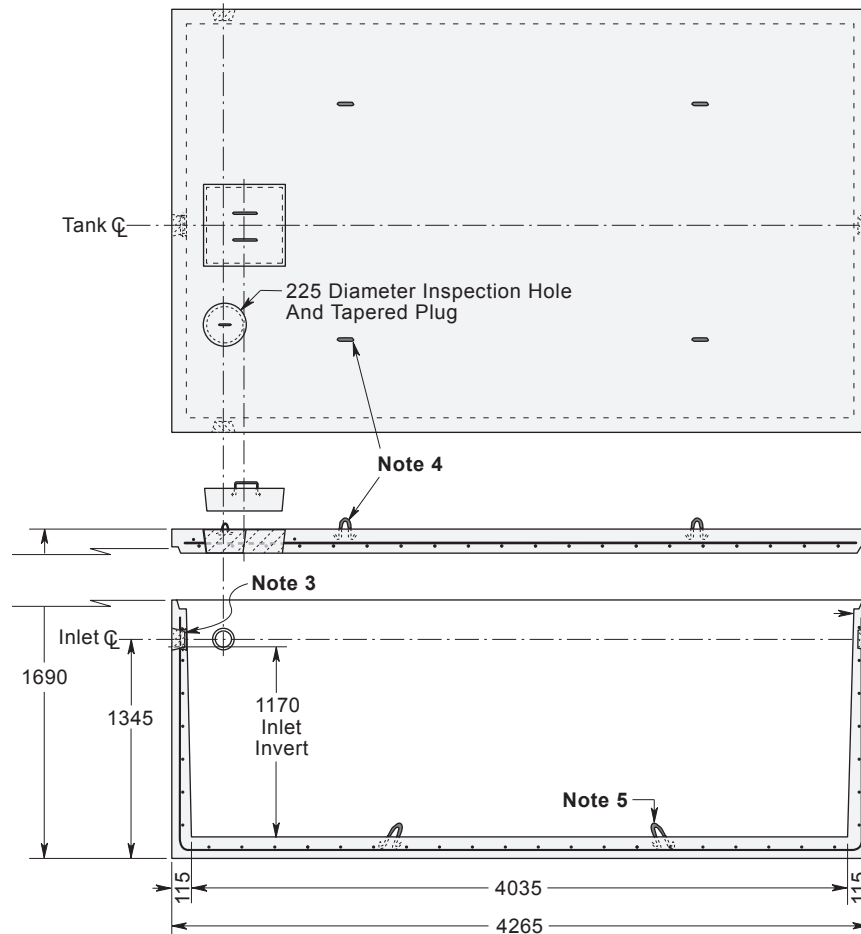
## CONSTRUCTION DETAILS \*

**Concrete:** 35 MPa at 28 Days, 5 to 8% Air Entrainment.

**Reinforcing:** 10 M bars at 200 mm centres each way in walls and floor.  
 15 M bars at 200 mm centres each way in top slab.  
 Four extra 15 M bars around roof access opening.  
 Minimum cover over reinforcing steel - 25 mm.

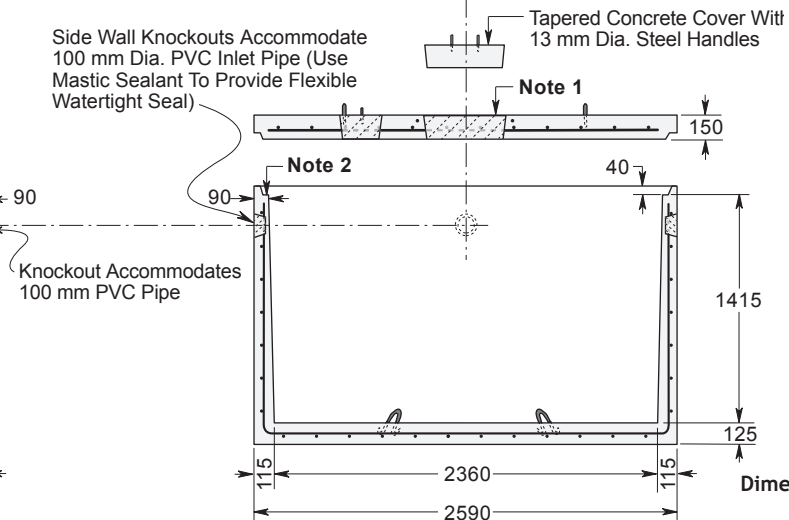
**Weight:** Top Slab 4050 kg  
 Tank Section 8080 kg  
 Total 12,130 kg

**Actual Capacity:** 9700 Litres Per Vertical Metre.  
 13,725 Litres to Underside of Roof Slab.  
 11,350 Litres to Invert of Inlet.



## NOTES

1. Standard access opening is square, has tapered sides and minor opening dimensions of 460 x 460 mm.
2. Close tolerance shiplap joint and fibrous mastic sealant ensures a solid watertight seal.
3. Flexible watertight inlet pipe connector in the end wall accommodates 100 mm diameter PVC pipe.
4. Top slab lifting points four places.
5. Tank section lifting points four places.



\* Commensurate with a 1.5 Metre burial over the top slab in firm soil away from any area of vehicular traffic.

For recommended installation procedures refer to Wilkinson Installation Guidelines and Lifting and Assembly Instructions.

**WARNING ! IMPROPER INSTALLATION ESPECIALLY IN UNSTABLE SOILS CAN RESULT IN THE STRUCTURAL FAILURE OF THIS PRODUCT**