

# 22,000 LITRE PRECAST CONCRETE WATER HOLDING TANK MODEL H22.2S

**WILKINSON HEAVY PRECAST LIMITED**

DUNDAS, ONTARIO

1-800-263-8503

## CONSTRUCTION DETAILS \*

**Concrete:** 35 MPa at 28 Days, 5 to 8% Air Entrainment.

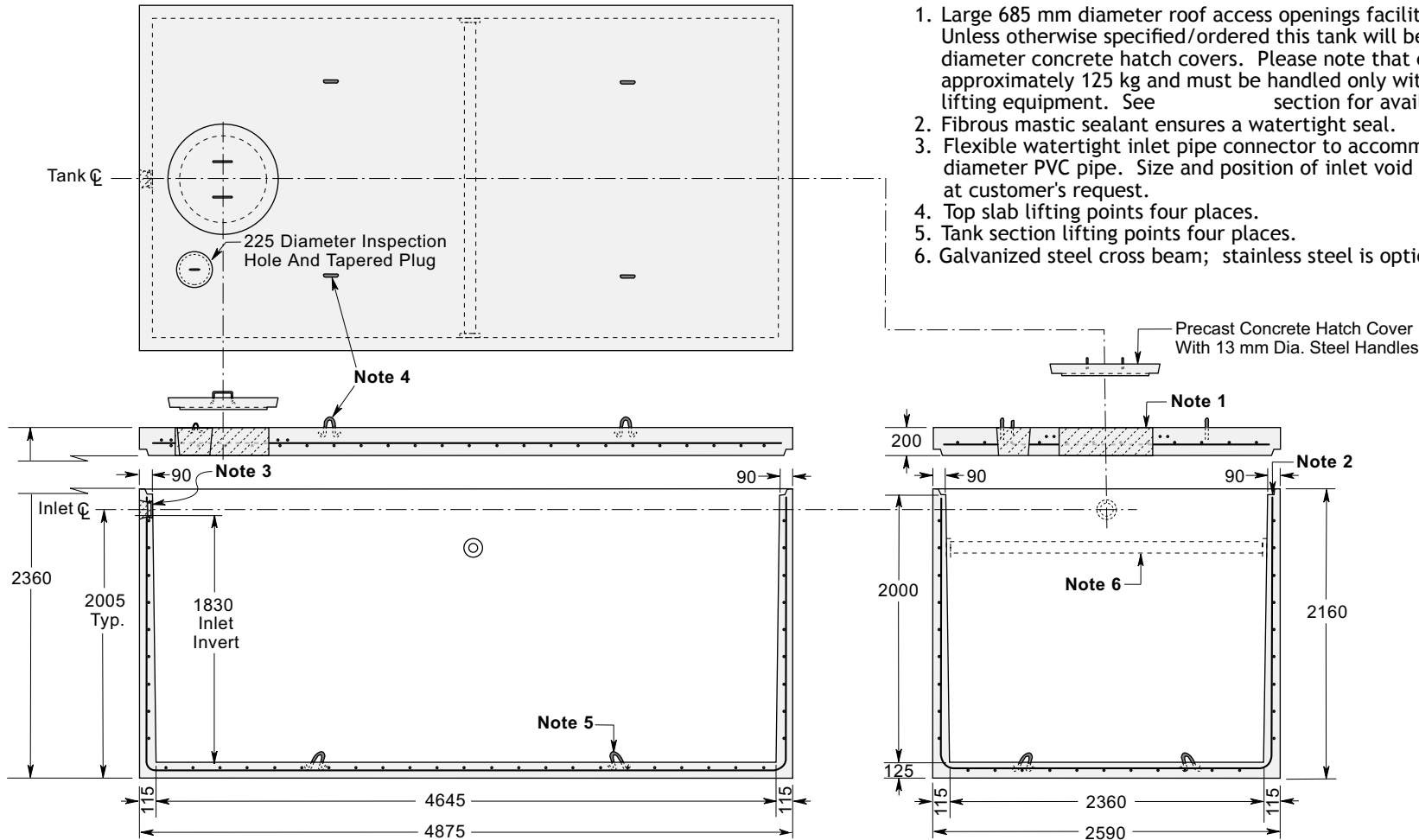
**Reinforcing:** 10 M bars at 200 mm centres each way in floor and walls.  
 15 M bars at 200 mm centres each way in top slab.  
 Eight extra 15 M bars around roof access opening.  
 Minimum cover over reinforcing steel - 25 mm.

**Weight:** Top Slab 6280 kg  
 Tank Section 11,400 kg  
 Total 17,680 kg

**Actual Capacity:** 11,138 Litres per Vertical Metre.  
 22,276 Litres to Underside of Roof Slab.  
 20,382 Litres to Invert of Inlet.

## NOTES

1. Large 685 mm diameter roof access openings facilitate tank maintenance. Unless otherwise specified/ordered this tank will be shipped with 840 mm diameter concrete hatch covers. Please note that each cover weighs approximately 125 kg and must be handled only with suitable mechanical lifting equipment. See section for available options.
2. Fibrous mastic sealant ensures a watertight seal.
3. Flexible watertight inlet pipe connector to accommodate 100 mm diameter PVC pipe. Size and position of inlet void can be modified at customer's request.
4. Top slab lifting points four places.
5. Tank section lifting points four places.
6. Galvanized steel cross beam; stainless steel is optional.



Dimensions in mm  
 N.T.S.

\*Product designed for a Maximum 1 Metre burial over the top slab in firm soil away from any area of vehicular traffic.

For recommended installation procedures refer to Wilkinson