

8,000 LITRE TWO COMPARTMENT PRECAST SEPTIC TANK MODEL S8PCS with INTEGRATED PUMP CHAMBER

Page 2 of 2

WILKINSON HEAVY PRECAST LIMITED

DUNDAS, ONTARIO

905-628-5611

www.wilkinsonheavyprecast.com

FEATURES

- Factory installed plumbing.
- High quality Mayers effluent pump.
- Stainless steel removal chain.
- Watertight inlet and outlet connections.
- Factory installed outlet baffle with effluent filter.
- Quick disconnect coupling for easy removal and installation.

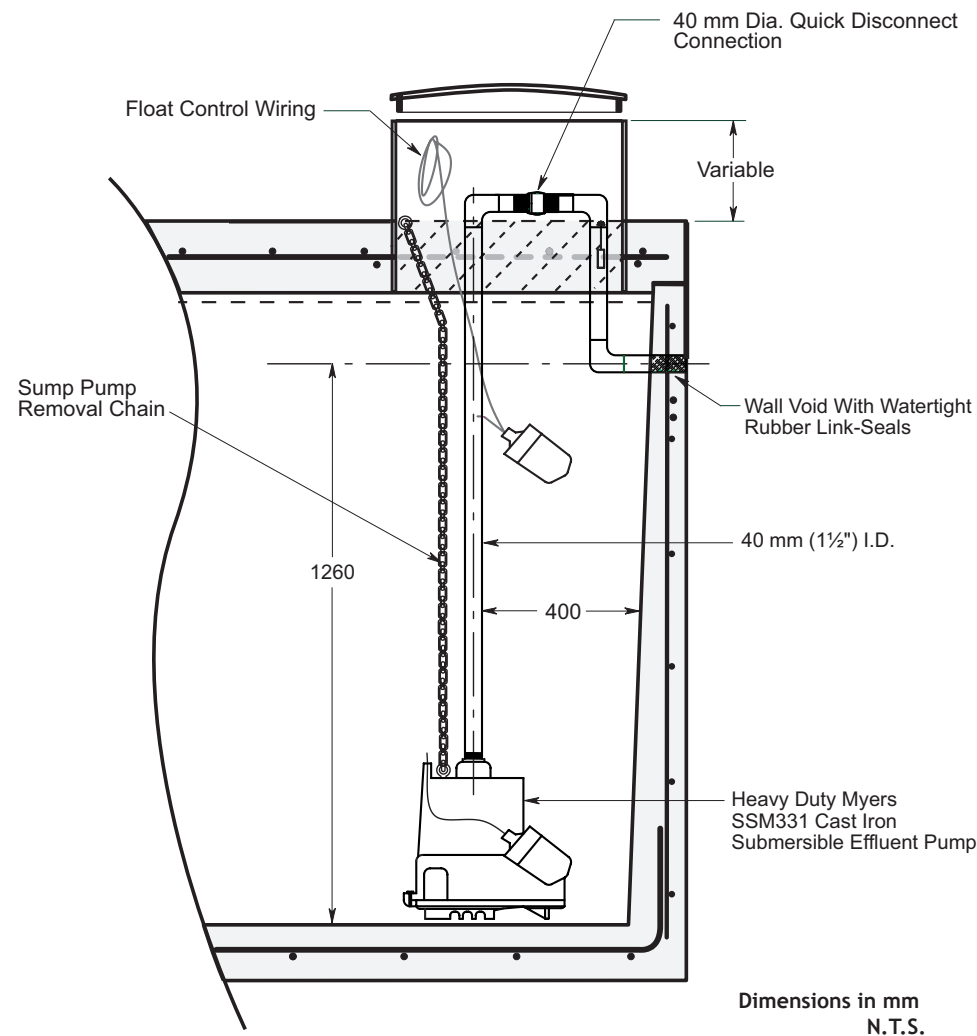
BENEFITS

- Septic Tank and Pump Chamber in one.
- Fast and easy installation.
- Smaller excavation size required.
- Less on-site time and labour.
- No external piping between chambers.

NOTES

- One (1) year warranty on all factory installed hardware (i.e. pump, piping, etc).
- Refer to the Care & Feeding of your Septic System Pamphlet (found on our website) for proper maintenance and care.

FACTORY INSTALLED PLUMBING DETAIL



For recommended installation procedures refer to Wilkinson Installation Guidelines.