

# 105,000 LITRE SINGLE COMPARTMENT PRECAST SEPTIC TANK MODEL S105SS

WILKINSON HEAVY PRECAST LIMITED

DUNDAS, ONTARIO

905-628-5611

www.wilkinsonheavyprecast.com

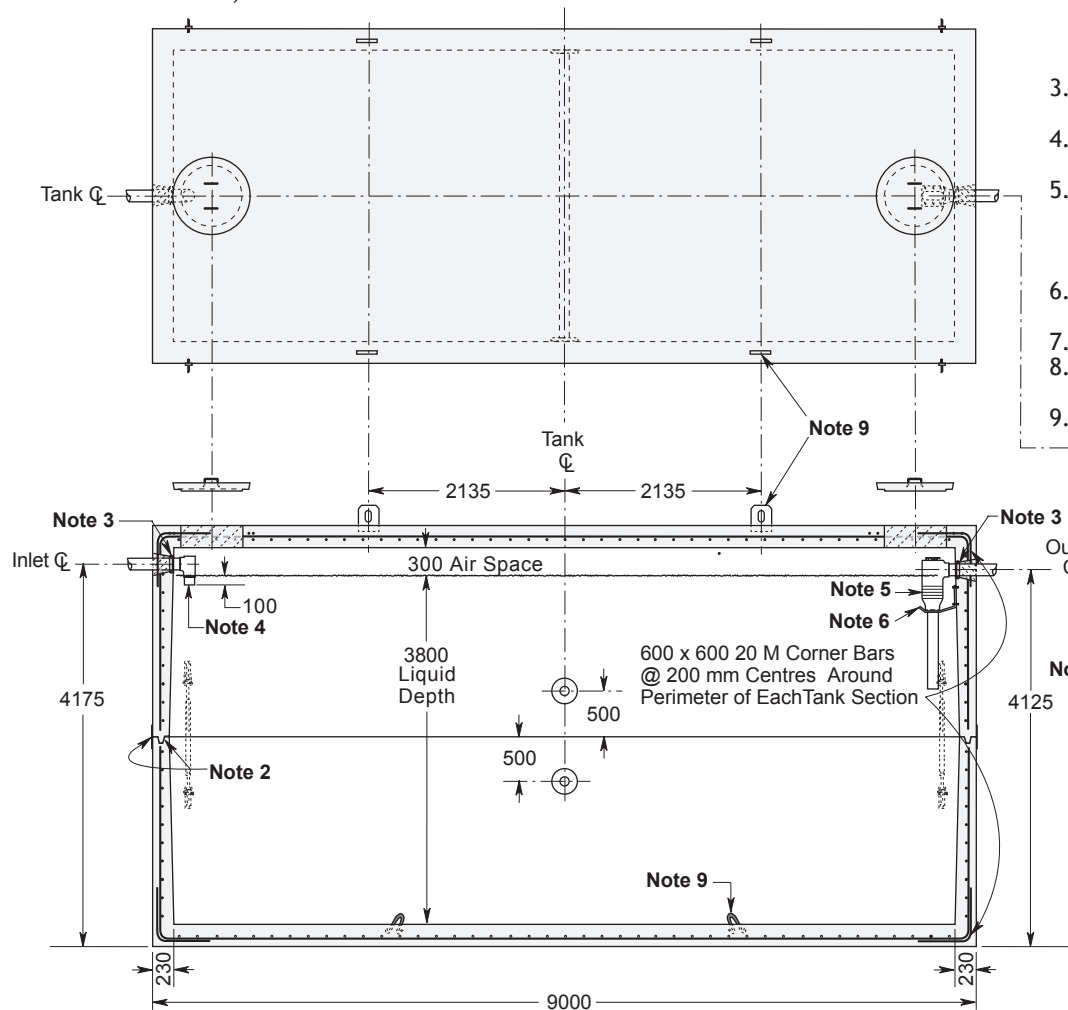
## CONSTRUCTION DETAILS \*

**Concrete:** 35 MPa at 28 Days, 5 to 8% Air Entrainment.

**Reinforcing:** 20 M Bars at 200 mm centres each way in roof, walls and floor.  
Eight extra 15 M bars around each roof access opening.

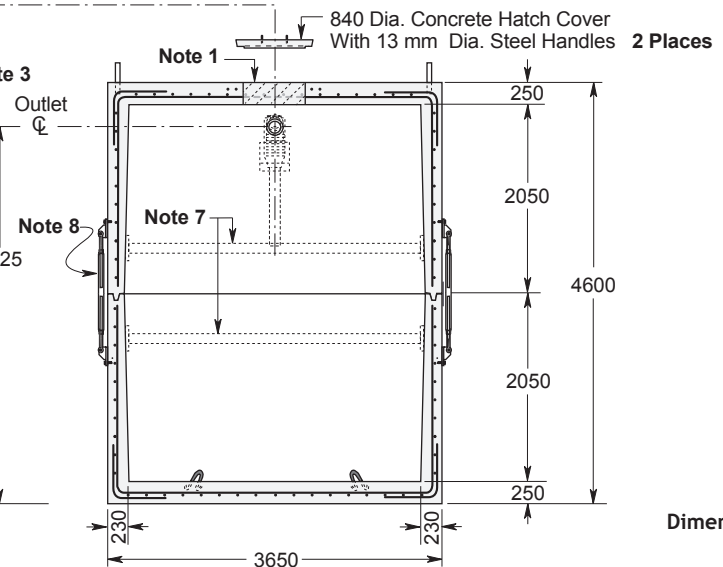
**Weight:** 96,000 kg (48,000 kg Per Half Section)

**Actual Capacity:** 27,832 Litres Per Vertical Metre.  
114,110 Litres to Underside of Roof.  
105,760 Litres to Invert of Outlet.



## NOTES

1. Large 685 mm diameter roof access openings facilitate tank and filter maintenance. Please note that each cover weighs approximately 125 kg and must be handled only with suitable mechanical lifting equipment. Access extensions may be required to meet Ontario Building Code requirements. See Access Riser section for available options.
2. Close tolerance of tongue and groove joint and fibrous mastic sealant ensures a solid structural and watertight seal. Primer and Mastic Band are supplied with each tank for application to the external surface of the tank over the joint between sections. This band is to be applied by the installing contractor.
3. Flexible watertight inlet/outlet pipe connector in each end wall accommodates 150 mm diameter PVC pipe.
4. Inlet baffle is 150 mm PVC 'TY' fitting with drop leg. It is supplied loose and meant to be cemented by the contractor to the inlet pipe.
5. NSF certified effluent filter for flow rates up to 38,000 litres per day (Multiple units are optional).  
Note that the Ontario Building Code requires an effluent filter be accessible at grade. See Access Riser section for available options.
6. Stainless steel bracket supports effluent filter firmly in position to prevent damage or dislocation during pumping and maintenance operations.
7. 150 mm diameter Galvanized Steel Pipe Cross Beams (Stainless Steel Optional).
8. 32 mm Galvanized Steel Brackets and Turnbuckles in 4 Places to prevent separation of seal. (Optional)
9. Top section/bottom section lifting points four places.



Dimensions in mm  
N.T.S.

\* Commensurate with a 1.5 Metre burial over the top slab in firm soil away from any area of vehicular traffic.

For recommended installation procedures refer to Wilkinson Installation Guidelines and Lifting and Assembly Instructions.

**WARNING ! IMPROPER INSTALLATION ESPECIALLY IN UNSTABLE SOILS CAN RESULT IN THE STRUCTURAL FAILURE OF THIS PRODUCT**