

# 20,000 LITRE SINGLE COMPARTMENT PRECAST SEPTIC TANK MODEL S20SS

WILKINSON HEAVY PRECAST LIMITED

DUNDAS, ONTARIO

905-628-5611

www.wilkinsonheavyprecast.com

## CONSTRUCTION DETAILS \*

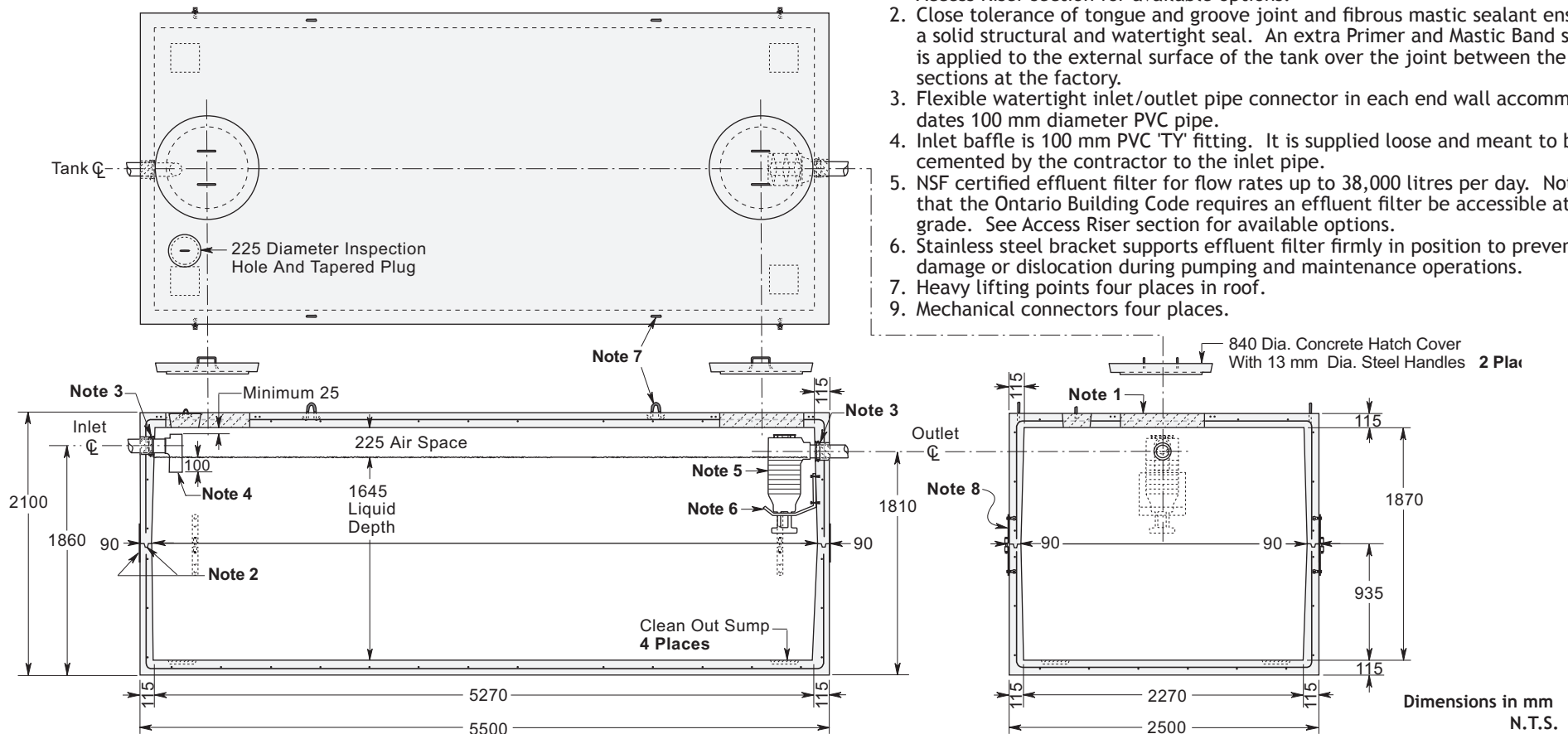
**Concrete:** 35 MPa at 28 Days, 5 to 8% Air Entrainment.

**Reinforcing:** 10 M bars at 200 mm centres each way in roof, walls and floor.  
Eight extra 10 M bars around roof access opening.  
Minimum cover over reinforcing steel - 25 mm.

**Actual Capacity:** 12,150 Litres Per Vertical Metre.  
22,720 Litres to Underside of Roof Slab.  
19,822 Litres to Invert of Outlet

THIS TANK IS FACTORY ASSEMBLED EXCEPT FOR ANY ACCESS RISERS AND IS INTENDED TO BE SHIPPED, HANDLED AND INSTALLED AS A ONE PIECE UNIT.

Shipping & Handling Weight: 15,200 kg



## NOTES

1. Large 685 mm diameter roof access openings facilitate tank and filter maintenance. Please note that each cover weighs approximately 125 kg and must be handled only with suitable mechanical lifting equipment. Access extensions may be required to meet Ontario Building Code requirements. See Access Riser section for available options.
2. Close tolerance of tongue and groove joint and fibrous mastic sealant ensures a solid structural and watertight seal. An extra Primer and Mastic Band seal is applied to the external surface of the tank over the joint between the tank sections at the factory.
3. Flexible watertight inlet/outlet pipe connector in each end wall accommodates 100 mm diameter PVC pipe.
4. Inlet baffle is 100 mm PVC 'TY' fitting. It is supplied loose and meant to be cemented by the contractor to the inlet pipe.
5. NSF certified effluent filter for flow rates up to 38,000 litres per day. Note that the Ontario Building Code requires an effluent filter be accessible at grade. See Access Riser section for available options.
6. Stainless steel bracket supports effluent filter firmly in position to prevent damage or dislocation during pumping and maintenance operations.
7. Heavy lifting points four places in roof.
9. Mechanical connectors four places.

\* Commensurate with a One Metre burial over the top slab in firm soil away from any area of vehicular traffic. Please consult with the factory before specifying this tank for use in an area of heavy loading.

For recommended installation procedures refer to Wilkinson Installation Guidelines and Lifting & Assembly Instructions.

**WARNING ! IMPROPER INSTALLATION ESPECIALLY IN UNSTABLE SOILS CAN RESULT IN THE STRUCTURAL FAILURE OF THIS PRODUCT**