

**PRECAST UTILITY MANHOLE MODEL U35.7**

**WILKINSON HEAVY PRECAST LIMITED**

DUNDAS, ONTARIO

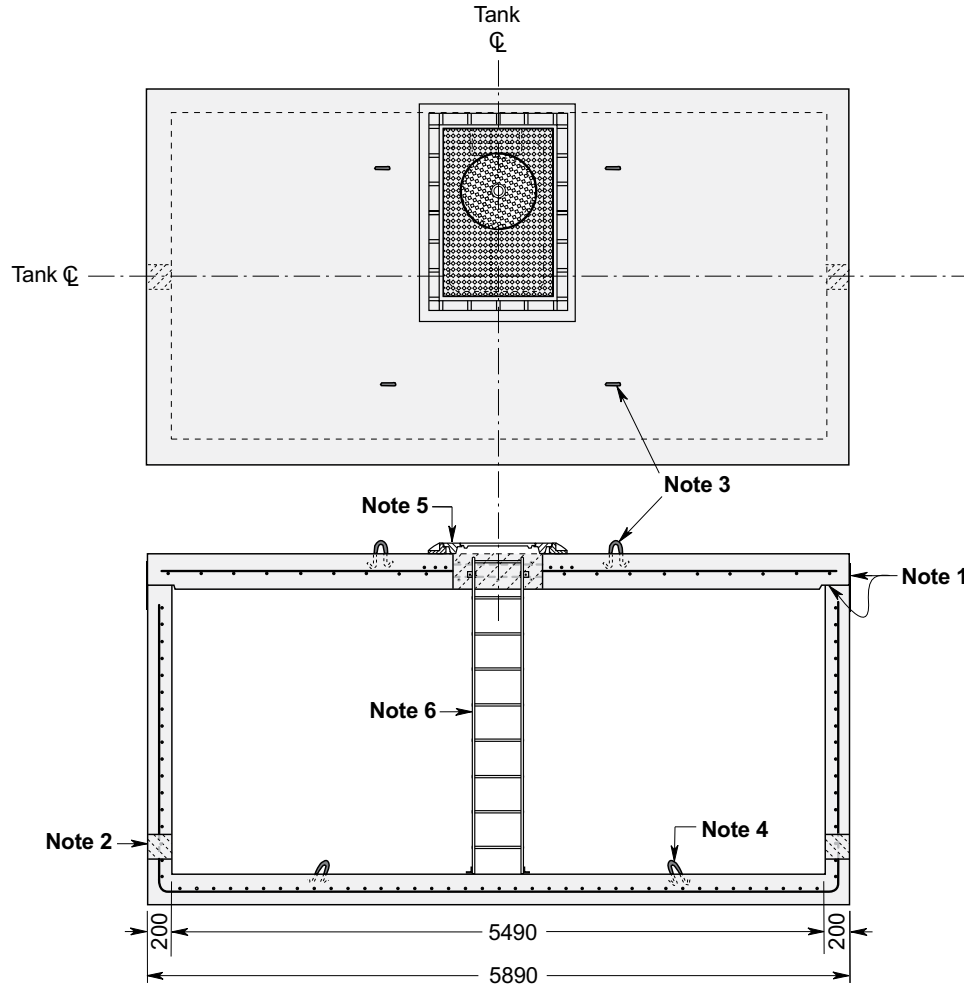
1-800-263-8503

**CONSTRUCTION DETAILS\***

**Concrete:** 35 MPa at 28 Days, 5 to 8% Air Entrainment. Precast concrete materials and construction conforms with CSA A23.4-09

**Reinforcing:** 15M bars at 150 mm centres each in walls and floor. 20M bars at 200mm centres each way in top slab.  
Twelve extra 15M Bars around the roof access opening.  
Minimum cover over reinforcing steel - 25 mm.

**Weight:** Top Slab 12,500 kg  
Bottom Section 33,500 kg  
Total Shipping Weight 46,000 kg

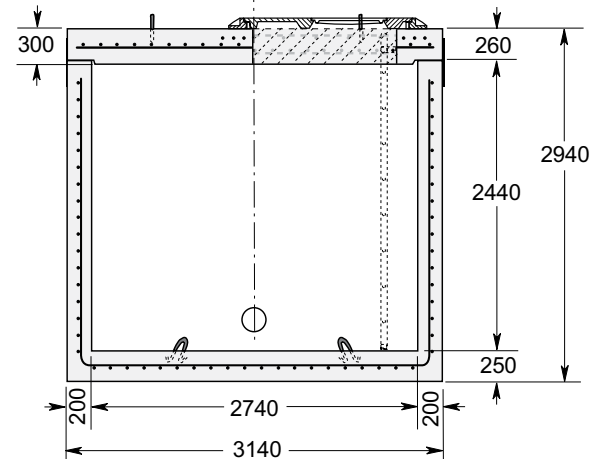


**NOTES**

1. A fibrous mastic sealant ensures a solid structural and watertight seal. Primer and Mastic Band are supplied with each tank for application to the external surface of the tank over the joint between sections. This band is to be applied by the installing contractor.
2. Number, size and positioning of wall penetrations to customer's specification.
3. Top slab lifting points four places.
4. Tank section lifting points four places.

**Optional Appurtenances Shown On This Drawing:**

5. Cast Iron Meter Chamber Frame and Cover - O.P.S.D 402.03.
6. Aluminum or galvanized steel ladder supplied loose for installation by contractor.



Dimensions in mm  
N.T.S.

\*Product designed for a Maximum 2 Metre burial over the top slab in firm soil beneath an area of vehicular traffic.

For recommended installation procedures refer to Wilkinson