

PRECAST UTILITY MANHOLE MODEL U35.7

WILKINSON HEAVY PRECAST LIMITED

DUNDAS, ONTARIO

905-628-5611

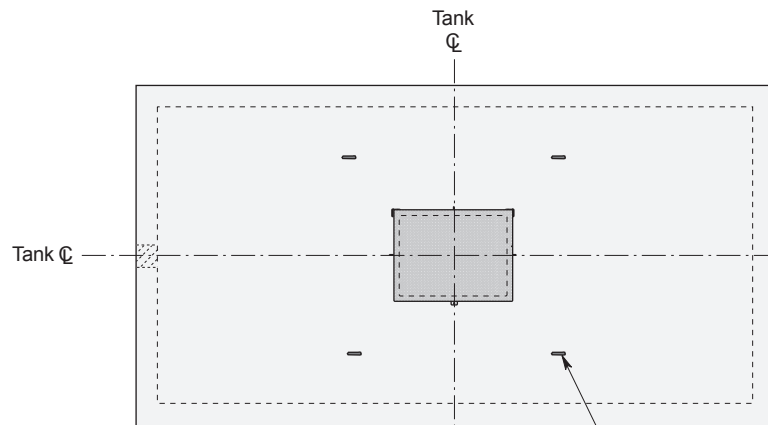
www.wilkinsonheavyprecast.com

CONSTRUCTION DETAILS*

Concrete: 35 MPa at 28 Days, 5 to 8% Air Entrainment. Precast concrete materials and construction conforms with CSA A23.4-00

Reinforcing: 15 M bars at 150 mm centres each in walls and floor.
2 mats of 15 M bars at 150 mm centres each way in top slab.
12 extra 15 M Bars around the roof access opening.
Minimum cover over reinforcing steel - 25 mm.

Weight: Top Slab 12,500 kg
Bottom Section 33,000 kg
Total Shipping Weight 45,500 kg

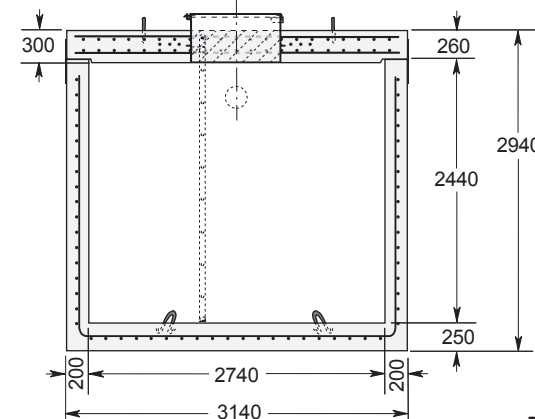
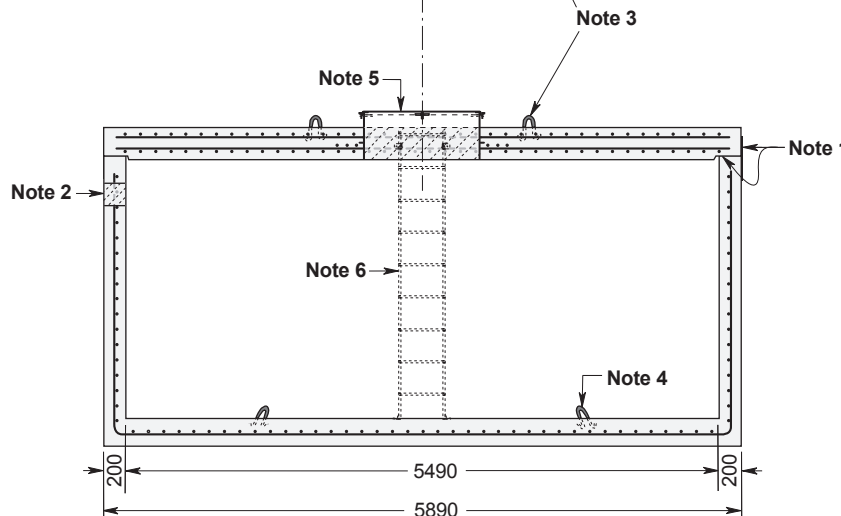


NOTES

1. Close tolerance of tongue and groove joint and fibrous mastic sealant ensures a solid structural and watertight seal. Primer and Mastic Band are supplied with each tank for application to the external surface of the tank over the joint between sections. This band is to be applied by the installing contractor.
2. Number, size and positioning of wall penetrations to customer's specification.
3. Top slab lifting points four places.
4. Tank section lifting points four places.

Optional Appurtenances Shown On This Drawing:

5. Galvanized steel or aluminum hinged drip proof cover. Many other types of access risers and hatch covers are available.
6. Aluminum or galvanized steel ladder supplied loose for installation by contractor.



Dimensions in mm
N.T.S.

* Commensurate with a 2 Metre burial over the top slab in firm soil under an area of vehicular traffic.

For recommended installation procedures refer to Wilkinson Installation Guidelines and Lifting and Assembly Instructions.