

FEATURES

- Designed to accept full pipe flow. **THERE IS NO BY-PASS**
- Both compartments are fully accessible from street level. Total removal of entrapped contaminants can be achieved with standard municipal maintenance equipment because the internal compartments of the **WATERGATE** have no obstructive elements or inaccessible areas.

FOUR FUNCTION DESIGN

- Traps floatables and debris.
- Removes sediment.
- Intercepts free oil.
- Provides spill containment.

DATA REQUIRED FOR ORDERING

- Maximum inflow rate.
- Outside diameter of all piping.
- Slope of inlet piping.
- Location and invert elevation of all pipes.
- Finished grade elevation.

NOTES

1. 1.3 metre square access void above each chamber.
2. AC1500 access riser above each chamber.
3. Cast iron manhole frame and cover O.P.S.D. Ref 401.01 Type 'A' shown. Hinged and lockable metal covers also available, see Access Riser Section.
4. Wall void for grout connection of inlet and outlet pipes. Side entry points can be provided. Flexible rubber pipe connectors are an available option.
The largest pipe normally used with Model W750 is 750 mm diameter. Please contact our design department before specifying this chamber for use with larger pipe.
5. Removable trash screen.
6. Lamella Unit.
7. Aluminum ladder and/or ladder rungs to the floor in each chamber.
8. Lifting hooks - four places.

MAINTENANCE INFORMATION

Contaminants accumulate naturally in certain zones within the **WATERGATE** Chamber. Entrapped materials must be cleared from the chamber before they affect or are affected by the internal functions of the unit. For more detail refer to **WATERGATE** Installation Guide and Maintenance Manual.

TECHNICAL DATA - MODEL WG-750

MAXIMUM FLOW RATE	754 LITRES PER SECOND FOR REMOVAL OF SEDIMENT 329 LITRES PER SECOND FOR OIL SEPARATION
TOTAL INTERNAL CAPACITY	18.4 CU. METERS

SEDIMENT STORAGE

Sediment will collect on the floor of both compartments and must be removed when either compartment accumulates a floor layer of 200 mm thickness.

MAXIMUM SEDIMENT CAPACITY IS CUBIC METERS.

OIL STORAGE

Oil trapped and held within the **WATERGATE** Chamber can be categorized in two ways:

- 1) Oil that collects over time on the surface of the first compartment as a result of normal separator operation. This oil must be removed annually or when the oil layer approaches mm in thickness (approximately litres).
- 2) Oil caught as a result of a spill and held in both compartments above the invert of the outlet device (approximately litres). Oil accumulated as a result of a spill must be removed as soon as possible after the event.

Please be aware that some of the above capacities are contingent upon the size and location of the storm sewer connection.

The above statements regarding chamber maintenance are abbreviated and for reference only. Please consult the **WATERGATE** Installation Guide and Maintenance Manual for a more comprehensive look at maintenance requirements.

DESIGN INFORMATION

System designers with questions pertaining to this product should call 1-800-263-8503 or e-mail us at info@wilkinsonheavyprecast.com. Wilkinson personnel would be happy to help you with your particular requirements and technical questions.

Continued On Following Page

STRUCTURAL DESIGN

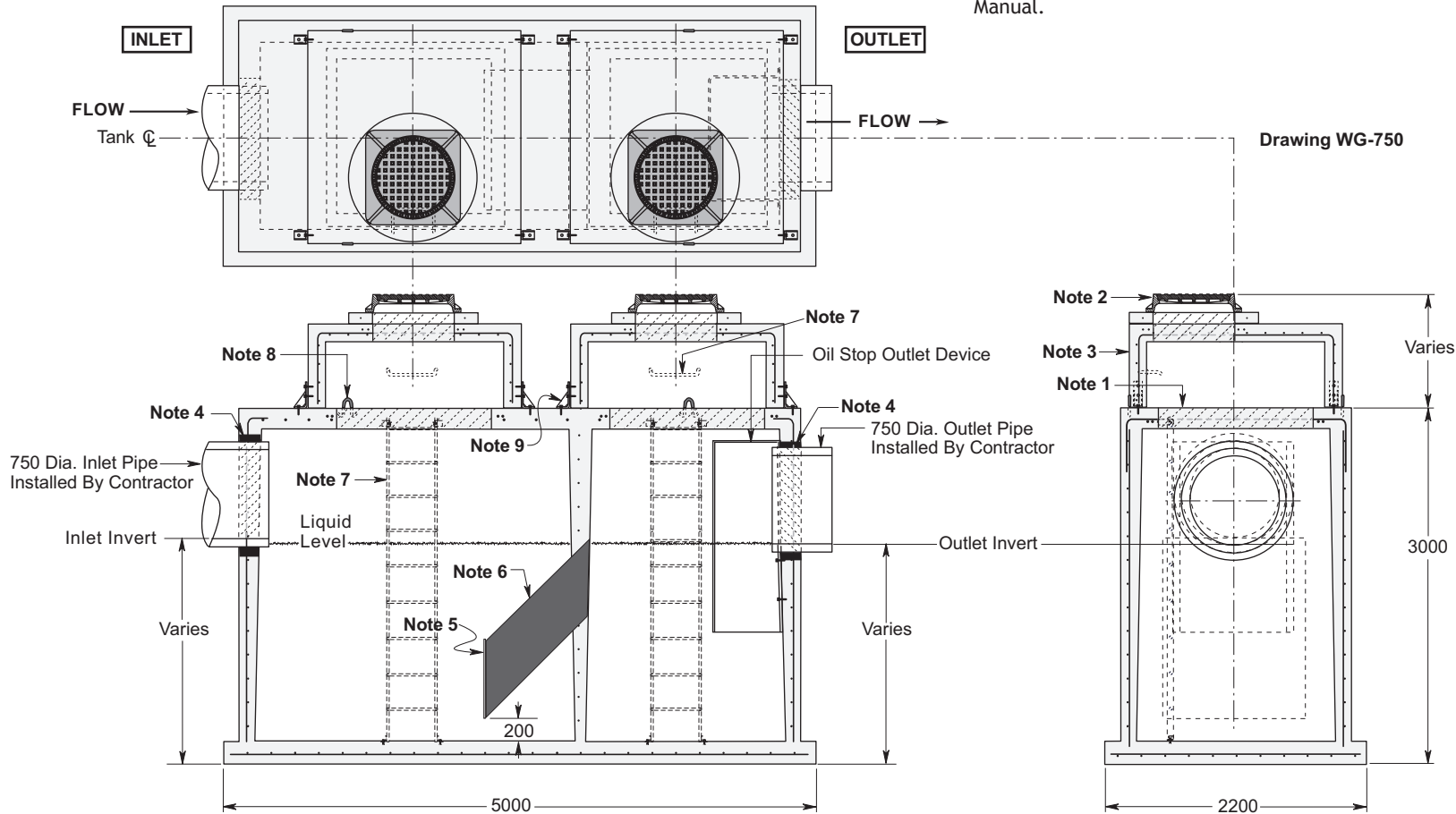
The standard **WATERGATE** Chamber is designed for a maximum **2 Metre** burial over the top slab in firm soil under an area of passenger vehicle parking. Please consult with the factory regarding installations that will exceed the above conditions. This chamber must not be placed directly onto any hard surface. We recommend a granular base, minimum 200 mm thick.

Concrete: 35 MPa at 28 Days, 5 to 8% Air Entrainment.

Reinforcing: Grade 400 deformed bar to suit loading requirements.
Minimum cover over reinforcing bars - 25 mm.

THIS CHAMBER IS FACTORY ASSEMBLED EXCEPT FOR ANY ACCESS RISERS AND IS INTENDED TO BE SHIPPED AND INSTALLED AS A ONE PIECE UNIT.
Shipping and Handling Weight: 23,500 kg

- For recommended installation procedures refer to Ancillary Literature: Lifting & Handling Instructions and **WATERGATE** Installation Guidelines & Maintenance Manual.



Dimensions in mm
N.T.S.