

PRECAST DOUBLE CATCH BASIN 115 mm Wall

OPSD Ref: 705.02

CONSTRUCTION DETAILS

Concrete: 35 MPa at 28 Days, 5 to 8% Air Entrainment.

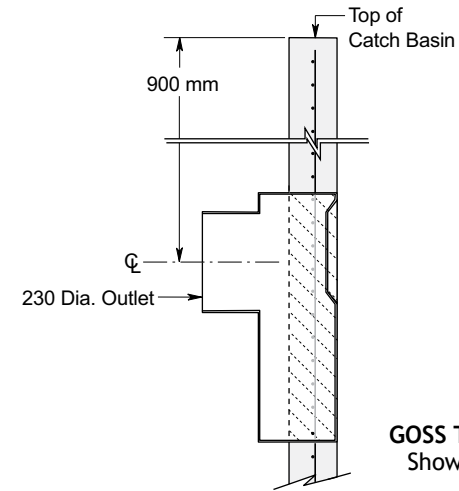
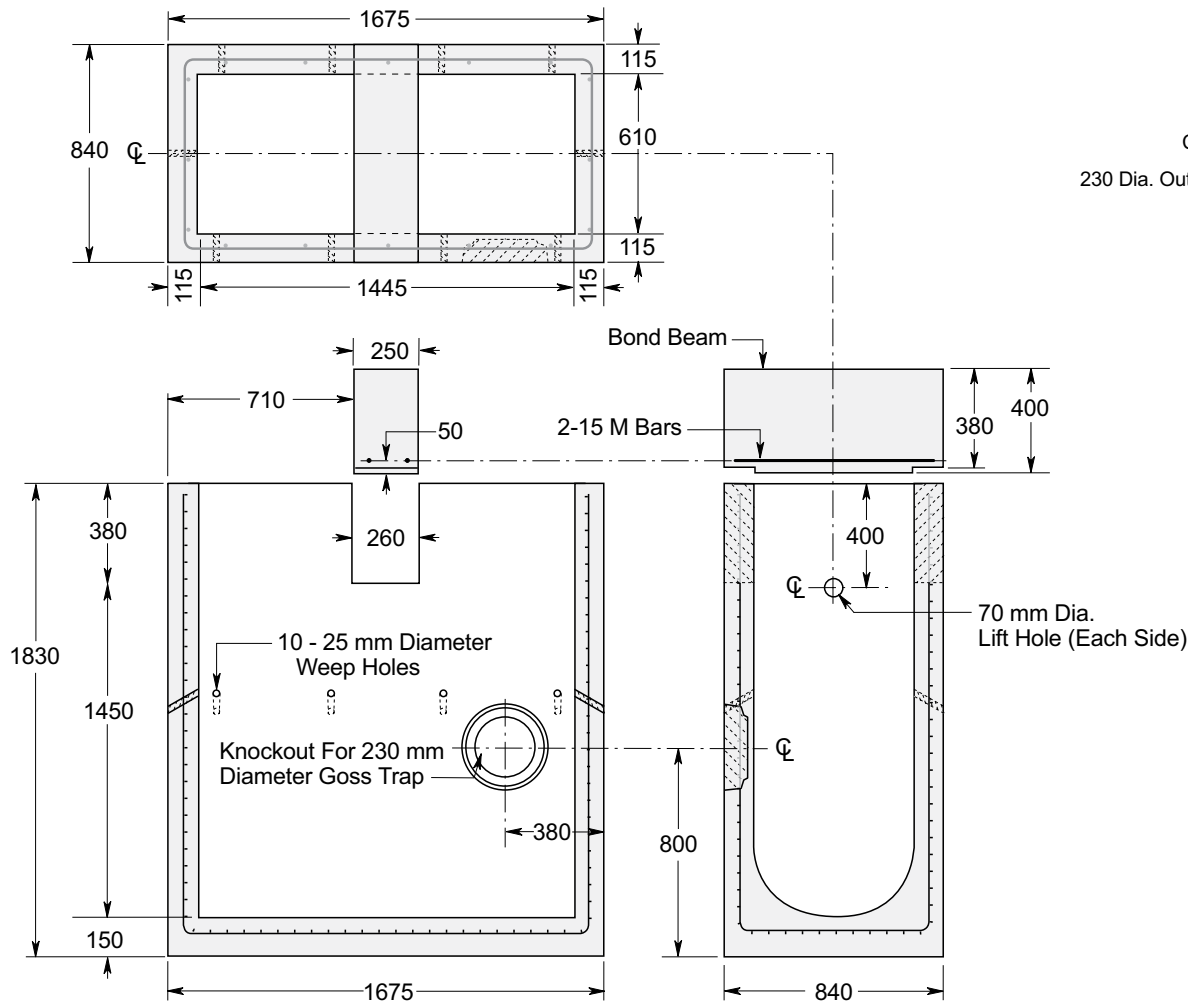
Reinforcing: 4 x 4 6/6 ww mesh in walls and floor.

Weight: 3050 kg including Bond Beam.

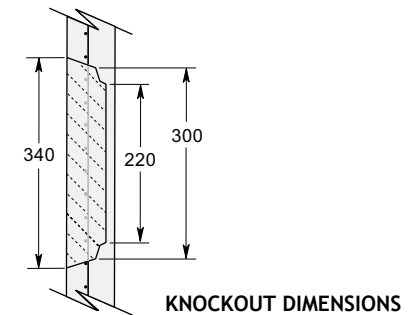
WILKINSON HEAVY PRECAST LIMITED

DUNDAS, ONTARIO

1-800-263-8503



GOSS TRAP (Polyethylene)
Shown Installed in Catch Basin Wall.



KNOCKOUT DIMENSIONS

Dimensions in mm
N.T.S.