

# 114 CUBIC METRE PRECAST FIRE FIGHTING TEST TANK MODEL H114FT

**WILKINSON HEAVY PRECAST LIMITED**

DUNDAS, ONTARIO

1-800-263-8503

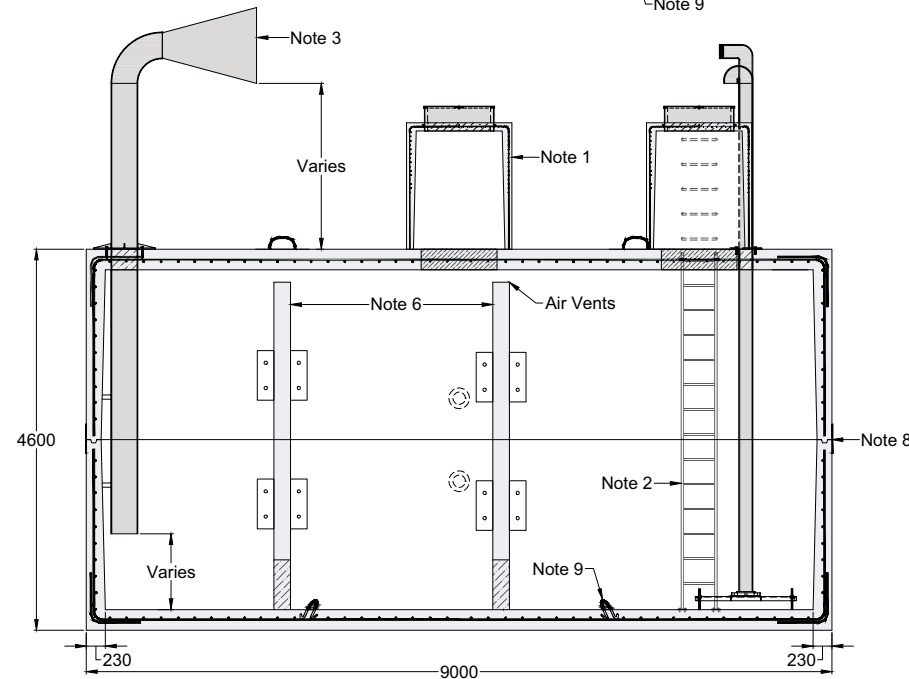
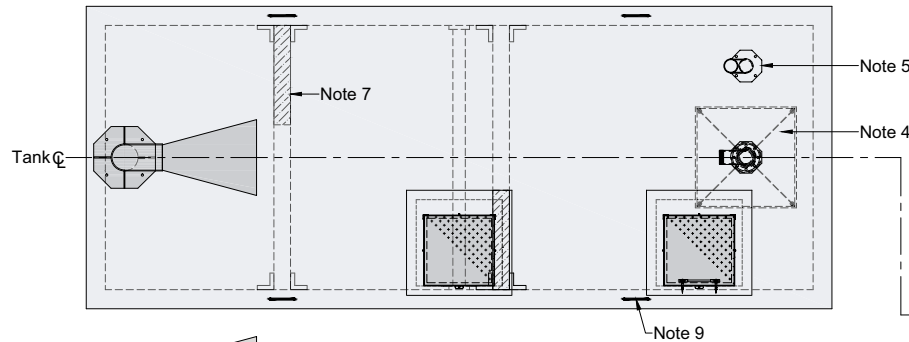
## CONSTRUCTION DETAILS \*

**Concrete:** 35 MPa at 28 Days, 5 to 8% Air Entrainment.

**Reinforcing:** 20 M Bars at 200 mm centres each way in roof, walls and floor.  
Eight extra 15 M bars around each roof access opening.  
Minimum cover over reinforcing steel - 25 mm.

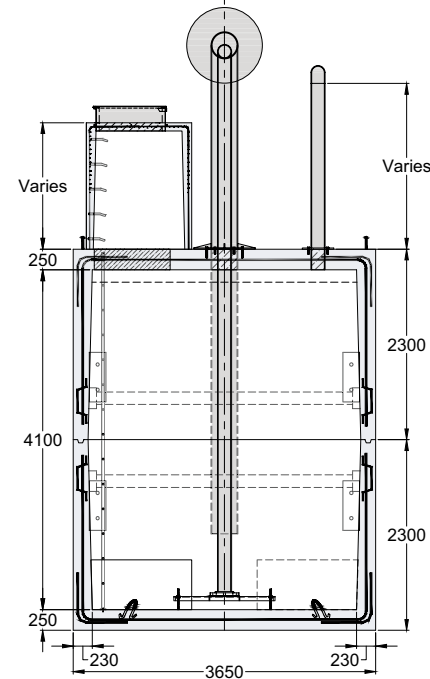
**Weight:** 96,000 kg (48,000 kg Per Half Section)

**Actual Capacity:** 27,832 Litres Per Vertical Metre.  
114,110 Litres to Underside of Roof.



## NOTES

1. Various styles of Access Risers, Hatches & Roof Openings available to allow suitable access to the tank. Please see section for some of the available options.
2. Custom Aluminum Ladder to the floor can be supplied loose to facilitate tank maintenance.
3. 915mm dia galvanized steel Blast Funnel with lockable hinged & removable screen gate with pad lock assembly.
4. 150mm dia galvanized steel Draft Pipe with optional Antivortex Plate assembly.
5. 150mm dia galvanized steel Vent Pipe with goose neck & ss bird/insect screen.
6. Optional concrete Partition Walls with suitable mounting hardware & sealant can be supplied loose for installation on-site by others.
7. Various size partition wall Flow Throughs available upon request.
8. Close tolerance of Tongue and Groove Joint and a Fibrous Mastic Sealant ensure a solid structural and watertight seal. Primer and Mastic Band will be supplied to be applied to the external surface of the tank over the joint between sections. This band is to be applied by the installing contractor.
9. Top/Bottom section lifting points four places each.



Dimensions in mm  
N.T.S.

For recommended installation procedures refer to Wilkinson

\*Product designed for a Maximum 1.5 Metre burial over the top slab in firm soil away from any area of vehicular traffic.