

36,000 LITRE CONCRETE WATER HOLDING TANK MODEL H35.7H

CONSTRUCTION DETAILS: CLASS H - HEAVY CONSTRUCTION

Concrete: 35 MPa at 28 Days, 5 to 8% Air Entrainment.

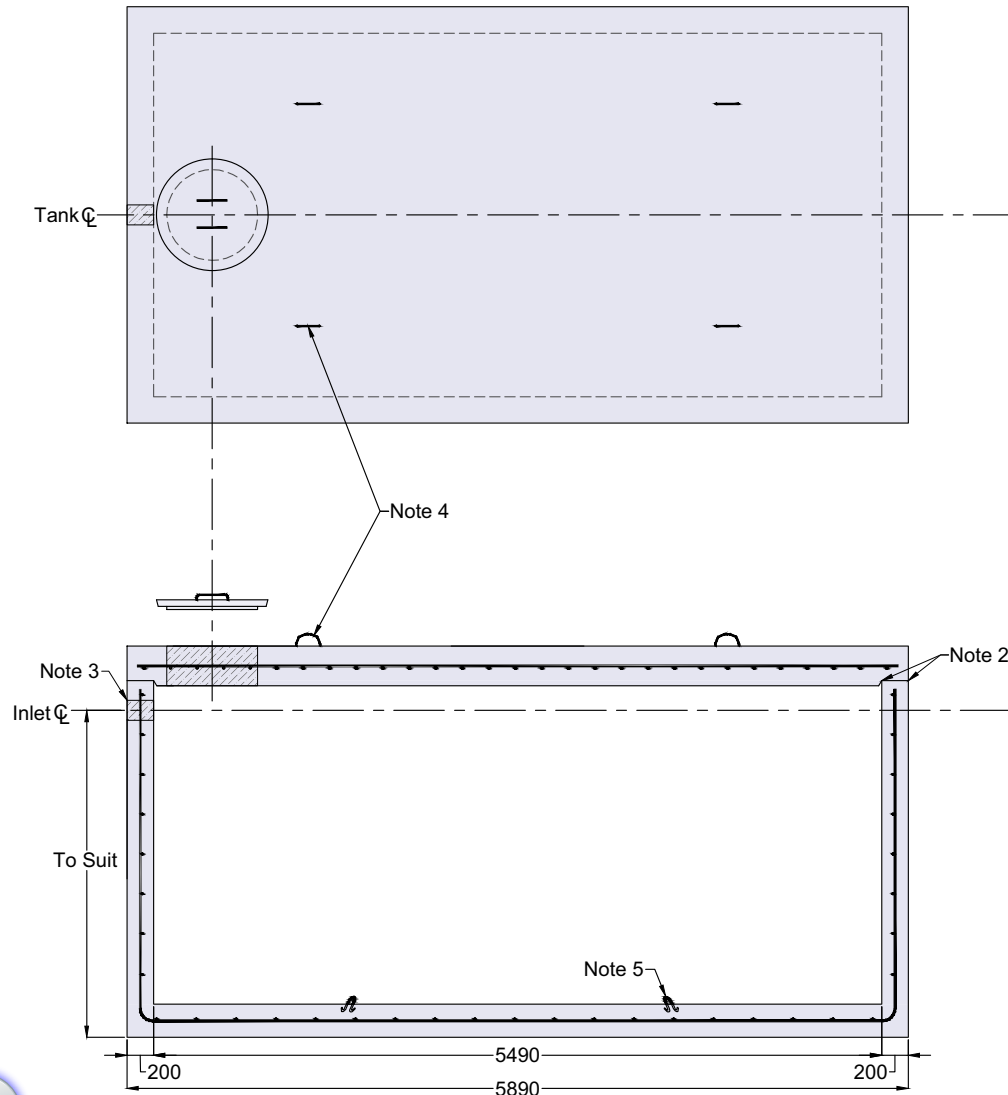
Reinforcing: Designed for a maximum 1.8 metre burial over the top slab in firm soil beneath an area of vehicular traffic.

WEIGHT:

Top Slab - 12,500 kg
Tank Section - 33,000 kg

CAPACITY:

Per Vertical Metre - 15,040 Litres
To Underside of Roof Slab - 35,720 Litres

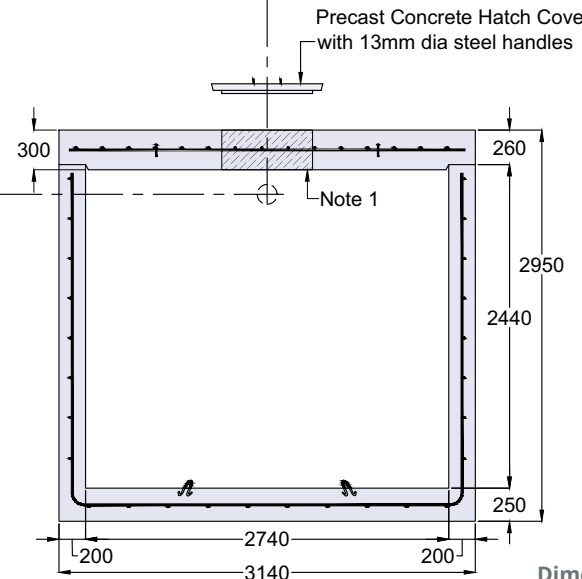


NOTES:

1. Large 685 mm diameter roof access openings facilitate tank maintenance. Unless otherwise specified when ordered this tank will be shipped with 840mm diameter concrete roof access cover only. Please see [Access Riser](#) section for available riser & hatch options.
2. Close tolerance joint and fibrous mastic sealant ensures a solid structural & watertight seal. Primer & Mastic Band are supplied with each tank for application to the external surface of the tank over the joint between sections. All sealant is to be applied by the installing contractor.
3. Size, type and location of connections are customizable.
4. Top slab lifting points four places.
5. Bottom section lifting points four places.

Some Available Options:

- Aluminum ladder rungs to the floor. Consult with the factory as to how this will effect the size and location of the access opening.



Dimensions in mm
N.T.S.

*Product designed for a **Maximum 1.8 Metre** burial over the top slab in firm soil beneath an area of vehicular traffic.

For recommended installation procedures refer to Wilkinson [Installation Guidelines](#).

WARNING! IMPROPER INSTALLATION ESPECIALLY IN UNSTABLE SOIL CAN RESULT IN THE STRUCTURAL FAILURE OF THIS PRODUCT

May 5, 2020