

57,000 LITRE PRECAST CONCRETE STORM WATER INFILTRATION CHAMBER MODEL H571C

WILKINSON HEAVY PRECAST LIMITED

DUNDAS, ONTARIO

1-800-263-8503

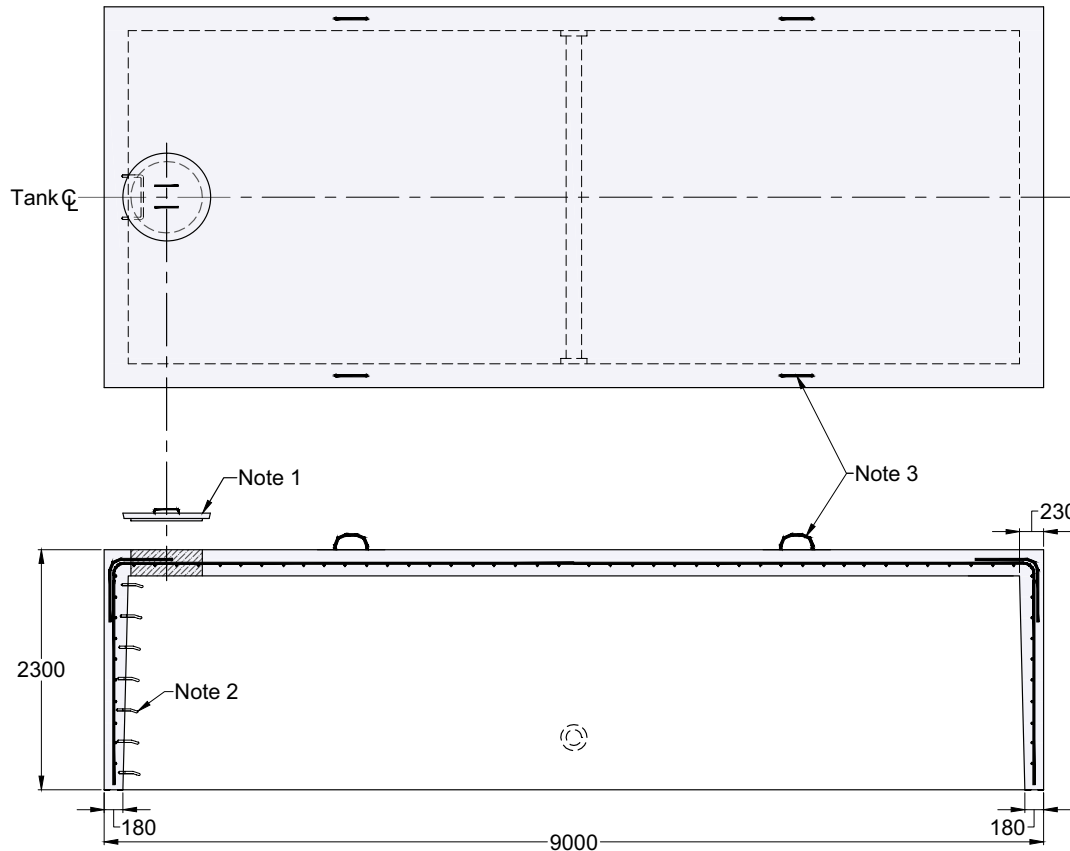
CONSTRUCTION DETAILS *

Concrete: 35 MPa at 28 Days, 5 to 8% Air Entrainment.

Reinforcing: 20 M Bars at 200 mm centres each way in walls and roof.
 600 x 600 20 M corner bars at 200 mm centres around top perimeter of tank. (114 places)
 Eight extra 15 M bars around roof access opening.
 Minimum cover over reinforcing steel - 25 mm.

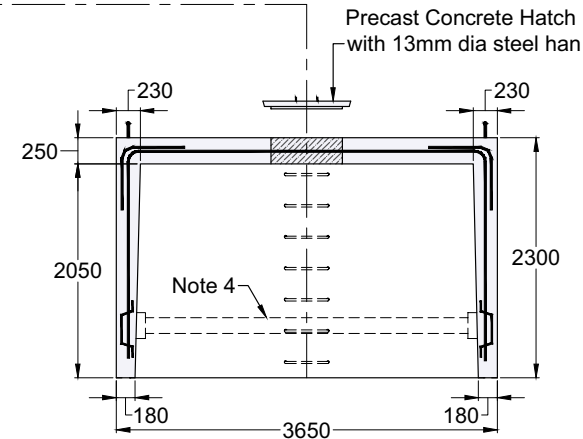
Approximate Weight: 48,000 kg

Actual Capacity: 27,832 Litres Per Vertical Metre.
 57,056 Litres to Underside of Roof Slab.



NOTES

1. Large 685 mm diameter roof access opening facilitates tank maintenance. Unless otherwise specified/ordered this tank will be shipped with a 840 mm diameter concrete hatch cover. Please note that the cover weighs approximately 125 kg and must be handled only with suitable mechanical lifting equipment. Please see section for available options.
2. Aluminum ladder rungs (optional).
3. Top lifting points four places.
4. 150 mm diameter Galvanized Steel Pipe Cross Beam. Stainless steel is optional.



Dimensions in mm
 N.T.S.

*Product designed for a **Maximum 1.8 Metre** burial over the top slab in firm soil away from any area of vehicular traffic.

For recommended installation procedures refer to Wilkinson