

PRECAST OIL INTERCEPTOR MODEL 12.5

CONSTRUCTION DETAILS:

Concrete: 50 MPa High Density Concrete at 28 Days, 5 to 8% Air Entrainment.
(Highly Resistant to Oil Absorbtion)

Reinforcing: 15M bars at 200mm centres each way in top slab. 15M bars at 200mm centres each way in walls and floor; horizontally in par titions. Eight extra 15 M bars around roof access openings.
Minimum cover over reinforcing steel - 25 mm.

Maximum Flow Rate: 275 Litres Per Minute for the separation of unemulsified oil.

TOTAL INTERNAL CAPACITY:

Wet & Dry Storage - 12.5 Cubic Metres

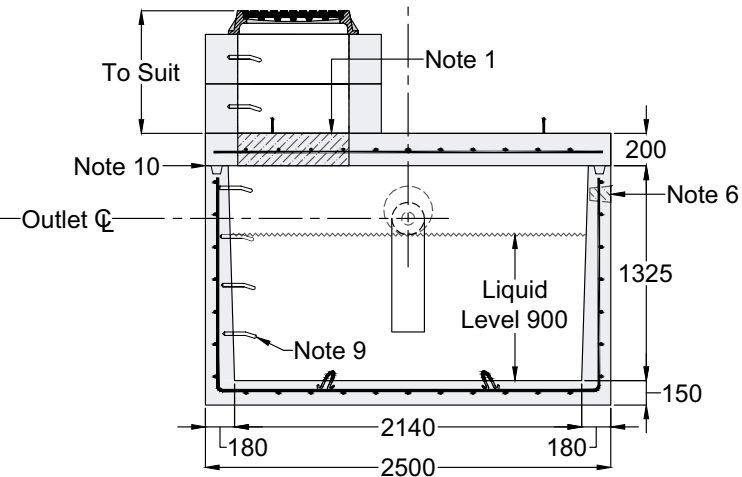
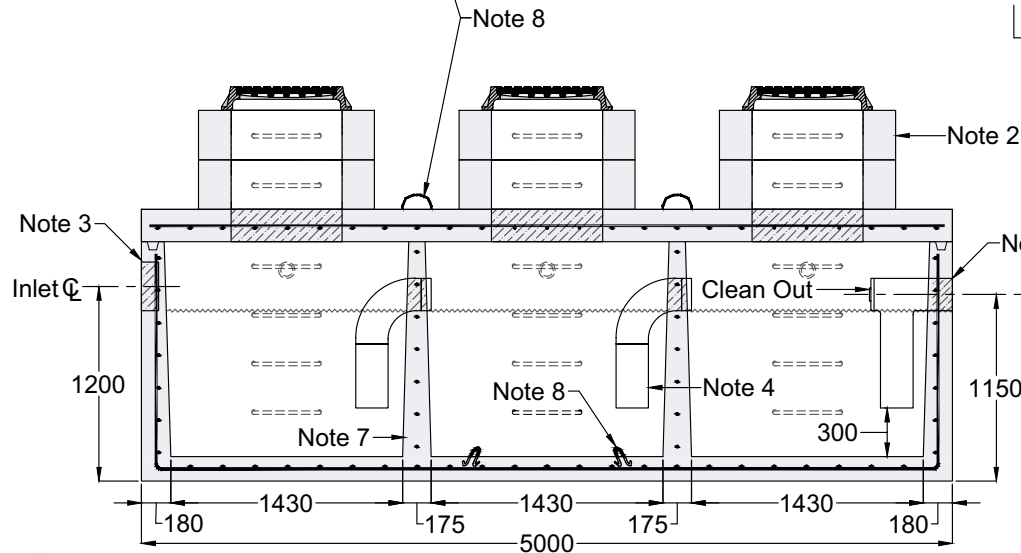
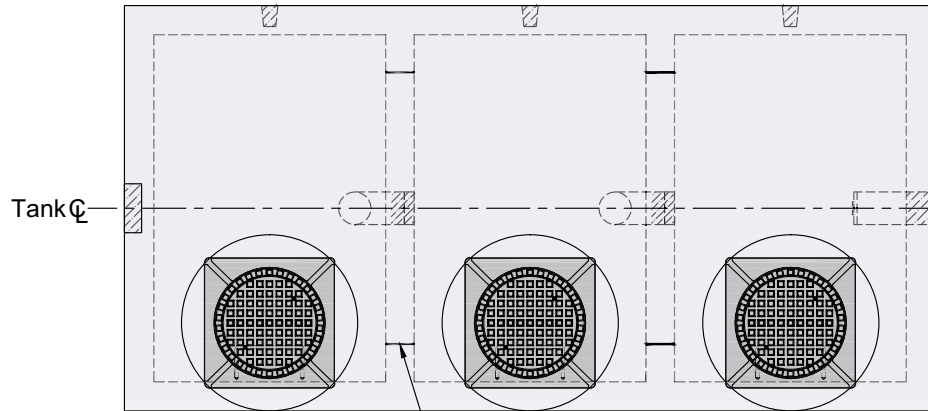
WEIGHT:

Top Slab - 6,000 kg
Tank Section - 13,800 kg
Total - 19,800 kg

NOTES:

1. Standard access openings are 685mm diameter.
2. Typical precast concrete access extension with cast iron closed pattern manhole frame and cover shown here. Please see [access riser](#) & [access cover](#) sections for available options.
3. Inlet knockout suitable for grout connection of max 200mm dia PVC pipe.
4. Internal Baffles are 200mm dia galv steel installed at the factory (PVC opt).
5. Solvent weld outlet port accomodates 200mm diameter PVC pipe.
6. Grout connection points for Vents optional.
7. The partitions are cast monolithically with the walls and floor.
8. Top slab/bottom section lifing points - four places each.
9. Aluminum ladder rungs - OPSD 405.010 to the floor in each chamber.
10. Oil resistant mastic sealant for all tank joints plus primer & mastic band supplied loose for application on-site by the installer.

- Consult the factory regarding various configuration options.
- This interceptor is **NOT** intended for use in **Stormwater Applications**.
- Flow rate shown is based on the influent being water and free oil at a temp of 15° Celcius with oil droplets having a specific gravity of 0.9 and greater than 100 microns in size.



*Product designed for a Maximum 2 Metre burial in firm soil under an area of occasional or intermittent vehicle traffic. Please consult with the factory before specifying this product for use in an area of heavy wheel loading.

Dimensions in mm
N.T.S.

For recommended installation procededures refer to Wilkinson [Installation Guidelines](#).