

PRECAST SQUARE MANHOLE 1.5 M Square

WILKINSON HEAVY PRECAST LIMITED

DUNDAS, ONTARIO

905-628-5611

www.wilkinsonheavyprecast.com

PARTICULARLY SUITED TO PUMP CHAMBER & LIFT STATION APPLICATIONS

CONSTRUCTION DETAILS

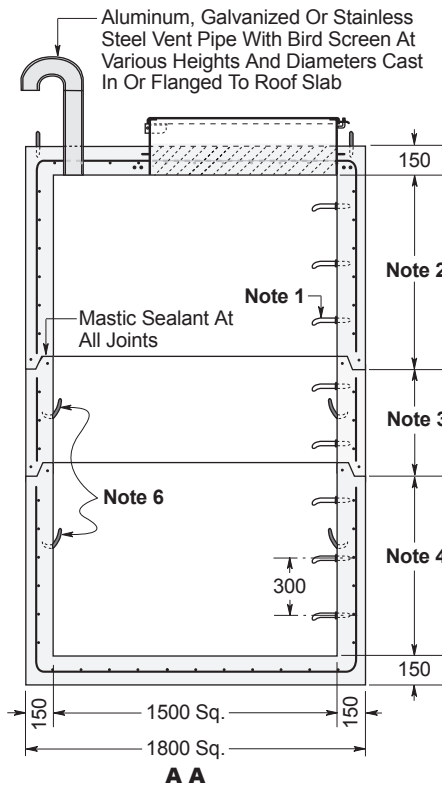
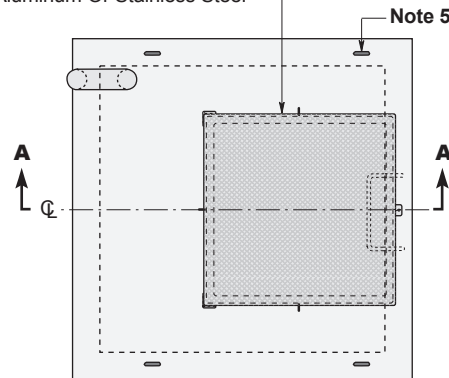
Concrete: 35 MPa at 28 Days, 5 to 8% Air Entrainment. Precast concrete materials and construction conforms with CSA A23.4-00

Reinforcing:* 10 M bars at 150 mm centres each way in roof, walls and floor. Extra 15 M bars around roof access opening. Minimum cover over reinforcing steel - 25 mm.

Weight: Base/Roof Slab 1200 kg
Walls 2515 kg/Vertical Metre

Calculation for Pump Chamber Capacity: 2225 Litres/Vertical Metre

Drip-proof And Lockable Frame & Cover Cast Into Top Slab Standard Construction Is 5 mm Low Carbon Steel Plate, Hot Dip Galvanized After Fabrication. This Design Is Also Available In Aluminum Or Stainless Steel



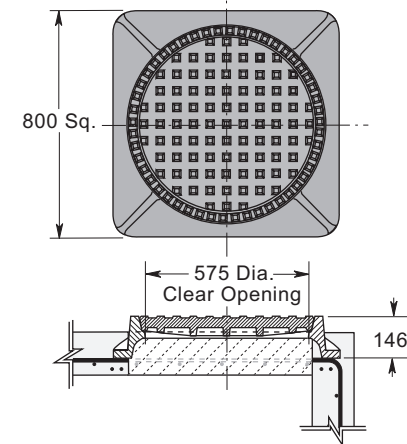
Dimensions in mm
N.T.S.

NOTES

1. Aluminum Ladder Rungs to the floor. Polyethylene coated aluminum available on request.
2. Available in 300 mm increments between a maximum height of 1.6 M and a minimum height of .3 M.
3. Available in heights of .6, .9, 1.2 and 1.5 M.
4. Available in 300 mm increments between a maximum height of 1.45 M and a minimum height of .46 M.
5. Top section lifting points four places.
6. Lifting points in walls in each section four places.
 - Safety platforms are available.

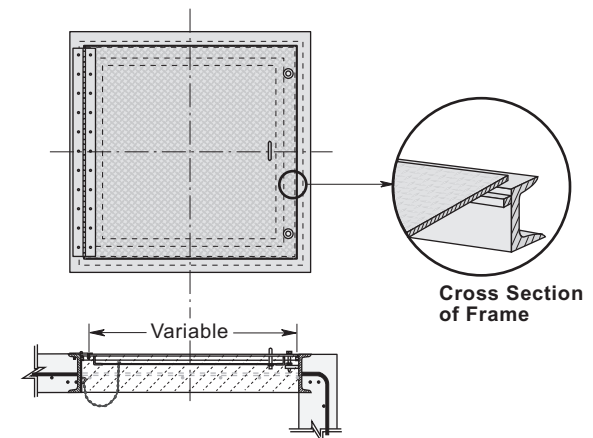
* Reinforcing detail can be customized to suit conditions of installation.

**OPTIONAL COVERS - Cast Into Top Slab
STANDARD CAST IRON FRAME and COVER - OPSD Ref. 401.01**



Also Available:
Bolted and Gasketed Frame and Cover - OPSD Ref. 401.03 and
Locking Cover - OPSD Ref. 401.06

FLUSH TYPE FRAME and COVER



Available in Galvanized Steel, Stainless Steel or Aluminum