

**PRECAST SQUARE MANHOLE 2.5 M Square**

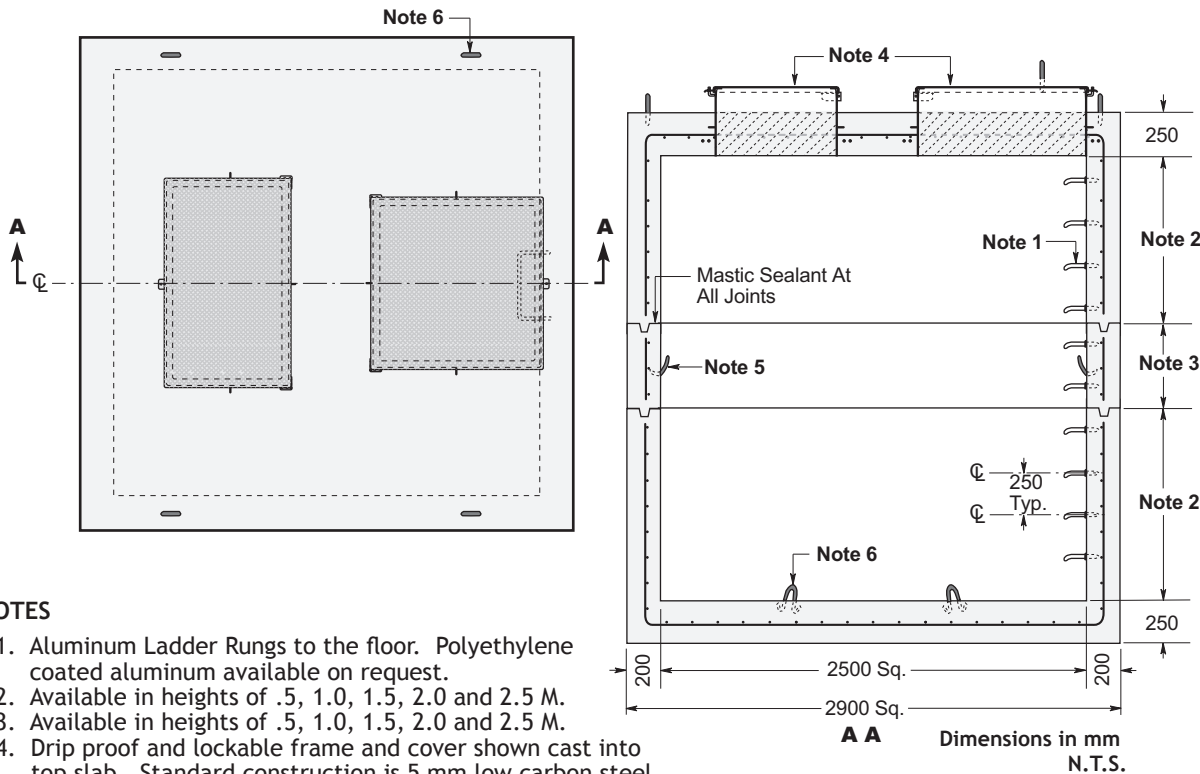
**CONSTRUCTION DETAILS**

**Concrete:** 35 MPa at 28 Days, 5 to 8% Air Entrainment. Precast concrete materials and construction conforms with CSA A23.4-00

**Reinforcing:**\* 10 M bars at 150 mm centres each way in roof, walls and floor.  
Extra 20 M bars around roof access opening.  
Minimum cover over reinforcing steel - 25 mm.

**Weight:** Base/Roof Slab 5200 kg  
Walls 5335 kg/Vertical Metre

**Calculation for Pump Chamber Capacity:** 6250 Litres/Vertical Metre



**NOTES**

1. Aluminum Ladder Rungs to the floor. Polyethylene coated aluminum available on request.
2. Available in heights of .5, 1.0, 1.5, 2.0 and 2.5 M.
3. Available in heights of .5, 1.0, 1.5, 2.0 and 2.5 M.
4. Drip proof and lockable frame and cover shown cast into top slab. Standard construction is 5 mm low carbon steel plate, hot dip galvanized after fabrication. This design is also available in aluminum or stainless steel.
5. Lifting points in walls four places.
6. Top/bottom section lifting points four places.

\* Reinforcing detail can be customized to suit conditions of installation.

**WILKINSON HEAVY PRECAST LIMITED**

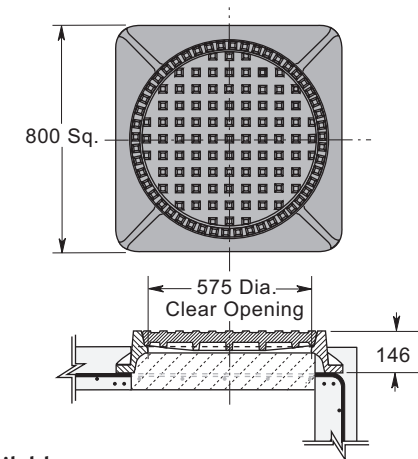
DUNDAS, ONTARIO

905-628-5611

www.wilkinsonheavyprecast.com

**OPTIONAL COVERS - Cast Into Top Slab**

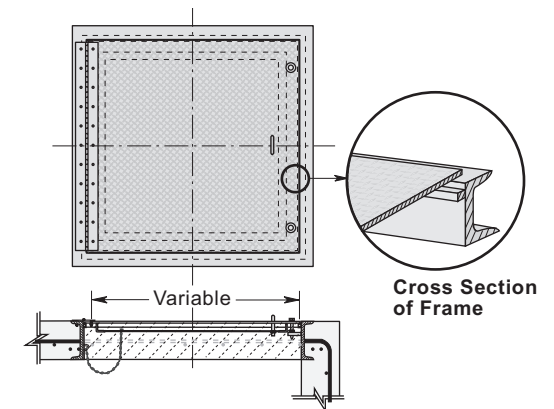
**STANDARD CAST IRON FRAME and COVER**  
OPSD Ref. 401.01



**Also Available:**

Bolted and Gasketed Frame and Cover - OPSD Ref. 401.03  
and Locking Cover - OPSD Ref. 401.06

**FLUSH TYPE FRAME and COVER**



Available in Galvanized Steel, Stainless Steel or Aluminum