

17,600 LITRE CONCRETE WATER HOLDING TANK MODEL H17.6S

CONSTRUCTION DETAILS:

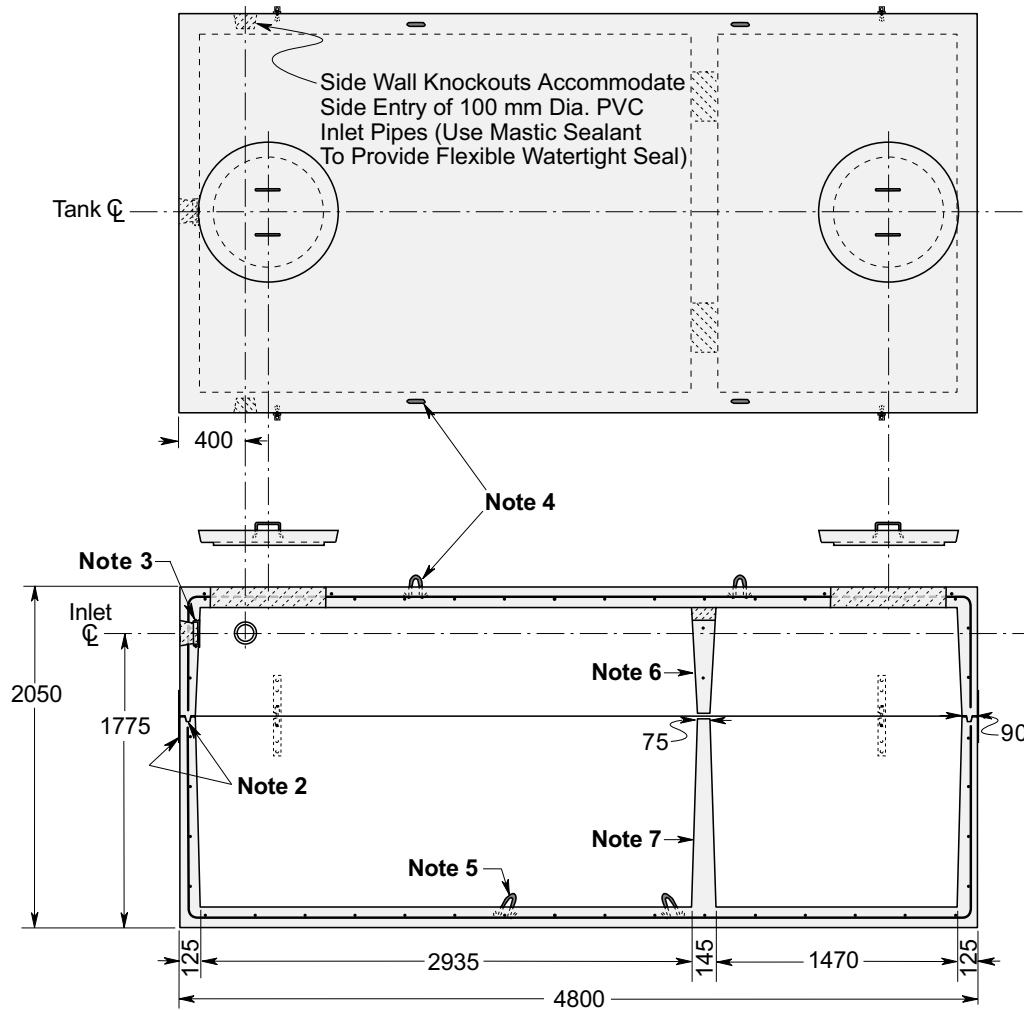
Concrete: 35 MPa at 28 Days, 5 to 8% Air Entrainment.

Reinforcing: Designed for a maximum 1.2 metre burial over the top slab in firm soil away from any area of vehicular traffic.

CAPACITY:

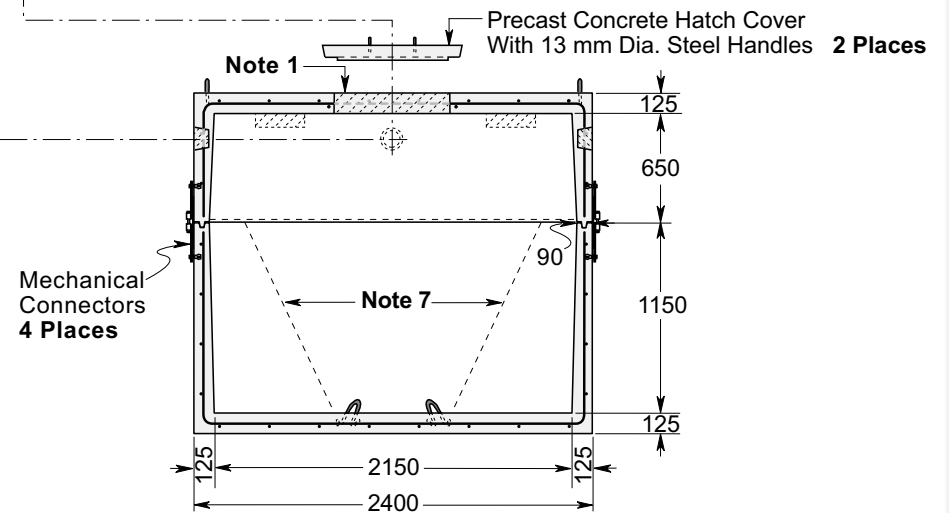
Per Vertical Metre - 9,778 Litres
To Underside of Roof Slab - 17,600 Litres

THIS TANK IS FACTORY ASSEMBLED EXCEPT FOR ANY ACCESS RISERS AND IS INTENDED TO BE SHIPPED AND INSTALLED AS A ONE PIECE UNIT. HANDLING WEIGHT 14,273 kg



NOTES:

1. Large 685 mm diameter roof access openings facilitate tank maintenance. Unless otherwise specified when ordered this tank will be shipped with 840 mm diameter concrete roof access cover only. Please see [Access Riser](#) section for available riser & hatch options.
2. Close tolerance of tongue & groove joint & fibrous mastic sealant ensures a solid structural and watertight seal. Primer & Mastic Band are supplied with each tank for application to the external surface of the tank over the joint between sections. All sealant is to be applied by the installing contractor.
3. Flexible watertight inlet pipe connector to accommodate 100mm dia PVC pipe. Size, type and location of connections are customizable.
4. Top section lifting points four places.
5. Bottom section lifting points four places.
6. The partition is cast monolithically with the walls and horizontal slab of the top section.
7. Knee wall each side of the bottom section is cast monolithically with the walls and horizontal slab of the bottom section.



*Product designed for a **Maximum 1.2 Metre** burial over the top slab in firm soil away from any area of vehicular traffic.

Dimensions in mm
N.T.S.

For recommended installation procedures refer to Wilkinson [Installation Guidelines](#).

WARNING! IMPROPER INSTALLATION ESPECIALLY IN UNSTABLE SOIL CAN RESULT IN THE STRUCTURAL FAILURE OF THIS PRODUCT

March 26, 2019