

**1350 & 1800 LITRE PRECAST WASTEWATER HOLDING TANK MODELS H1.35S & H1.8S**

**WILKINSON HEAVY PRECAST LIMITED**

DUNDAS, ONTARIO

905-628-5611

www.wilkinsonheavyprecast.com

**CONSTRUCTION DETAILS \***

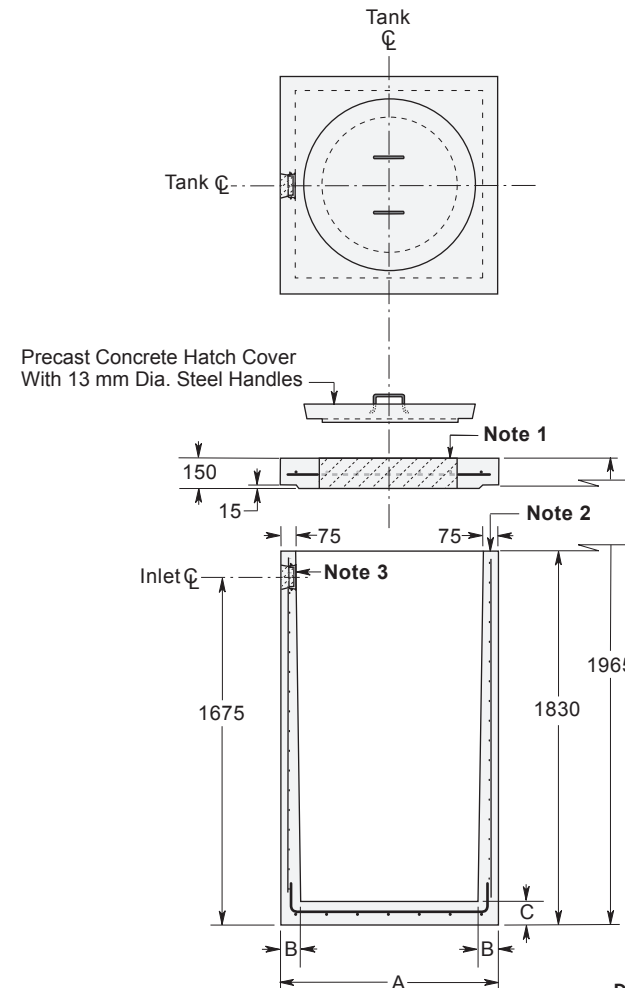
**Concrete:** 35 MPa at 28 Days, 5 to 8% Air Entrainment.

**Reinforcing:** 4 x 4 6/6 ww mesh in walls.  
 10 M bars at 150 mm centres each way in top slab and floor.  
 Four extra 10 M bars around roof access opening.  
 Minimum cover over reinforcing steel - 25 mm.

MODEL NUMBER	H1.35S	H1.8S
Capacity (Litres):	1350	1800
Weight (kg):		
Top Slab	415	590
Tank Section	1670	2435
Total	2085	3025
Actual Capacity:		
Litres Per Vertical Metre	790	1140
Litres To Underside of Roof Slab	1386	1945
Litres To Invert Of Inlet	1225	1710
Dimensions:		
A. Length/Width	1065 mm Sq.	1270 mm Sq.
B. Wall Thickness At Bottom	100 mm	125 mm
C. Floor Thickness	75 mm	125 mm

**NOTES:**

1. Large 685 mm diameter roof access openings facilitate tank maintenance. Unless otherwise specified/ordered this tank will be shipped with 840 mm diameter concrete hatch covers. Please note that each cover weighs approximately 125 kg and must be handled only with suitable mechanical lifting equipment. Please see Access Riser section for available options.
2. Mastic sealant which ensures a watertight joint is supplied with the tank.
3. Flexible watertight inlet pipe connector to accommodate 100 mm diameter PVC pipe.



Dimensions in mm  
N.T.S.

\* Commensurate with a 1.5 Metre burial over the top slab in firm soil away from any area of vehicular traffic.

For recommended installation procedures refer to Wilkinson Installation Guidelines.

**WARNING ! IMPROPER INSTALLATION ESPECIALLY IN UNSTABLE SOILS CAN RESULT IN THE STRUCTURAL FAILURE OF THIS PRODUCT**