

# 27,000 LITRE PRECAST WASTEWATER HOLDING TANK MODEL H27S

**WILKINSON HEAVY PRECAST LIMITED**

DUNDAS, ONTARIO

905-628-5611

[www.wilkinsonheavyprecast.com](http://www.wilkinsonheavyprecast.com)

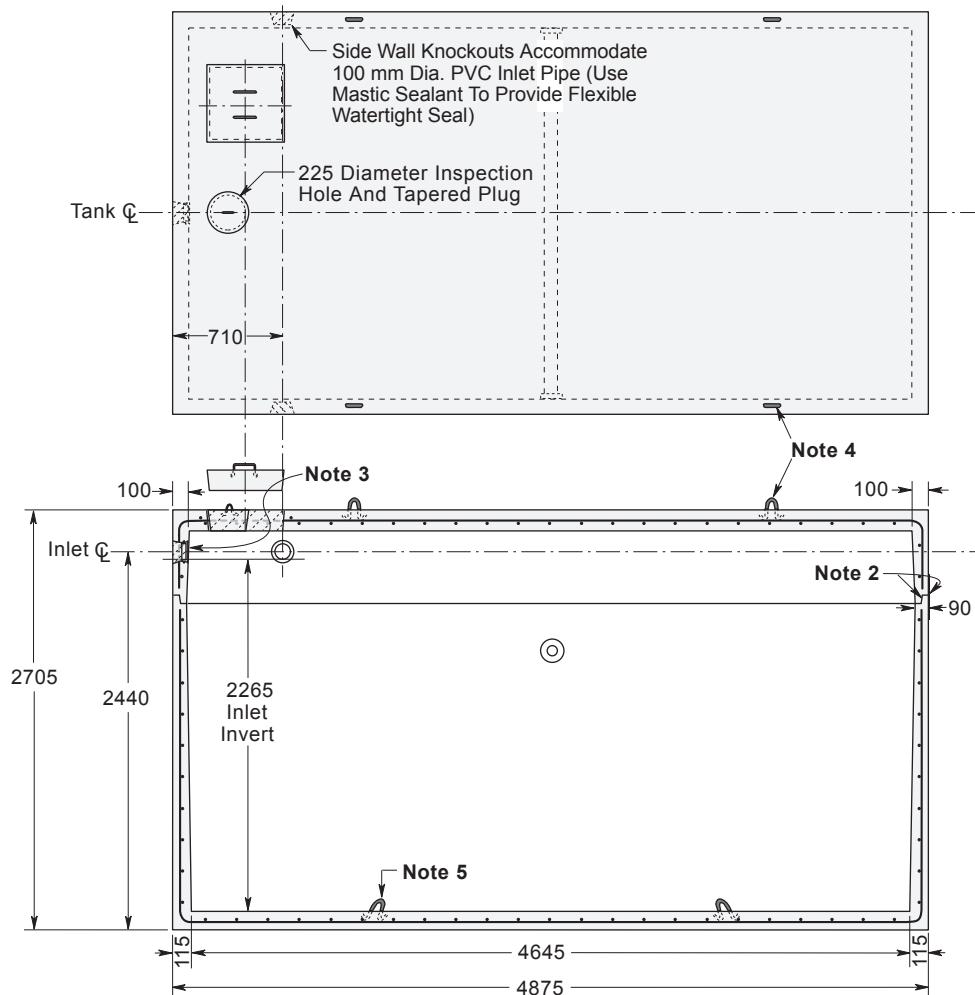
## CONSTRUCTION DETAILS \*

**Concrete:** 35 MPa at 28 Days, 5 to 8% Air Entrainment.

**Reinforcing:** 10 M bars at 200 mm centres each way in walls, floor and roof.  
Eight extra 10 M bars around roof access opening.  
Minimum cover over reinforcing steel - 25 mm.

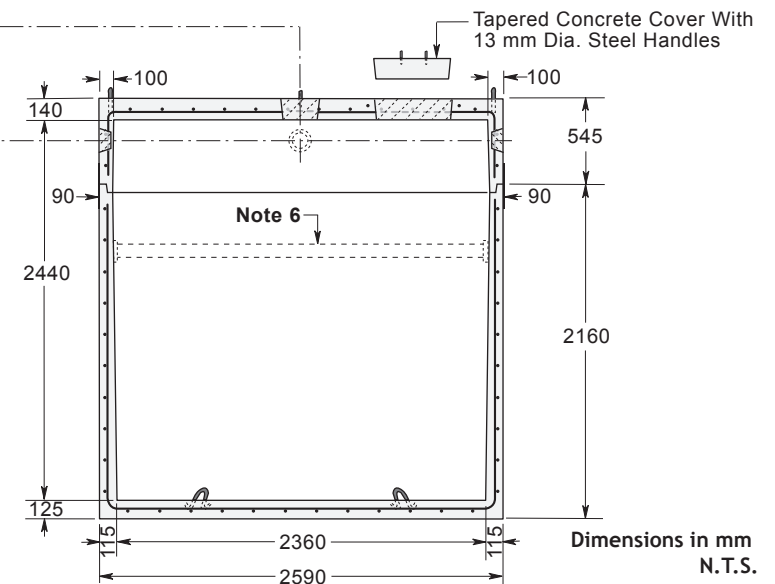
**Weight:** Top Section 5760 kg  
Bottom Section 11,400 kg  
Total 17,160 kg

**Actual Capacity:** 11,156 Litres Per Vertical Metre.  
27,220 Litres to Underside of Roof.  
25,268 Litres to Invert of Inlet.



## NOTES

- 1 Standard access opening is square, has tapered sides and minor opening dimensions of 460 x 460 mm.
- 2 Close tolerance shi lap joint and fibrous mastic sealant ensures a solid watertight seal. Primer and Mastic Band are supplied with each tank for application to the external surface of the tank over the joint between the tank section and the top slab. This band is to be applied by the installing contractor.
- 3 Flexible watertight inlet pipe connector to accommodate 100 mm diameter PVC pipe. Size and position of inlet void can be modified at customer's request. Consult with the factory as to how this will affect the liquid capacity of this tank.
- 4 Top section lifting points four places.
- 5 Bottom section lifting points four places.
- 6 Galvanized steel cross beam; stainless steel is optional.



\* Commensurate with a 1 Metre burial over the top slab in firm soil away from any area of vehicular traffic.

For recommended installation procedures refer to Wilkinson Installation Guidelines and Lifting and Assembly Instructions.

**WARNING ! IMPROPER INSTALLATION ESPECIALLY IN UNSTABLE SOILS CAN RESULT IN THE STRUCTURAL FAILURE OF THIS PRODUCT**