

8,000 LITRE TWO COMPARTMENT PRECAST SEPTIC TANK MODEL S8PCS with INTEGRATED PUMP CHAMBER

Page 1 of 2

WILKINSON HEAVY PRECAST LIMITED

DUNDAS, ONTARIO

905-628-5611

www.wilkinsonheavyprecast.com

CONSTRUCTION DETAILS *

Concrete: 35 MPa at 28 Days, 5 to 8% Air Entrainment.

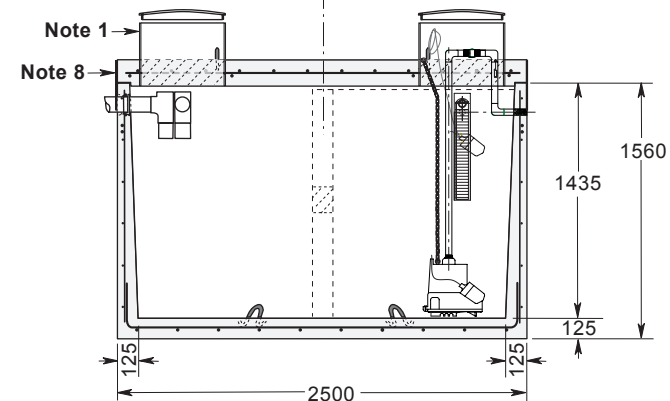
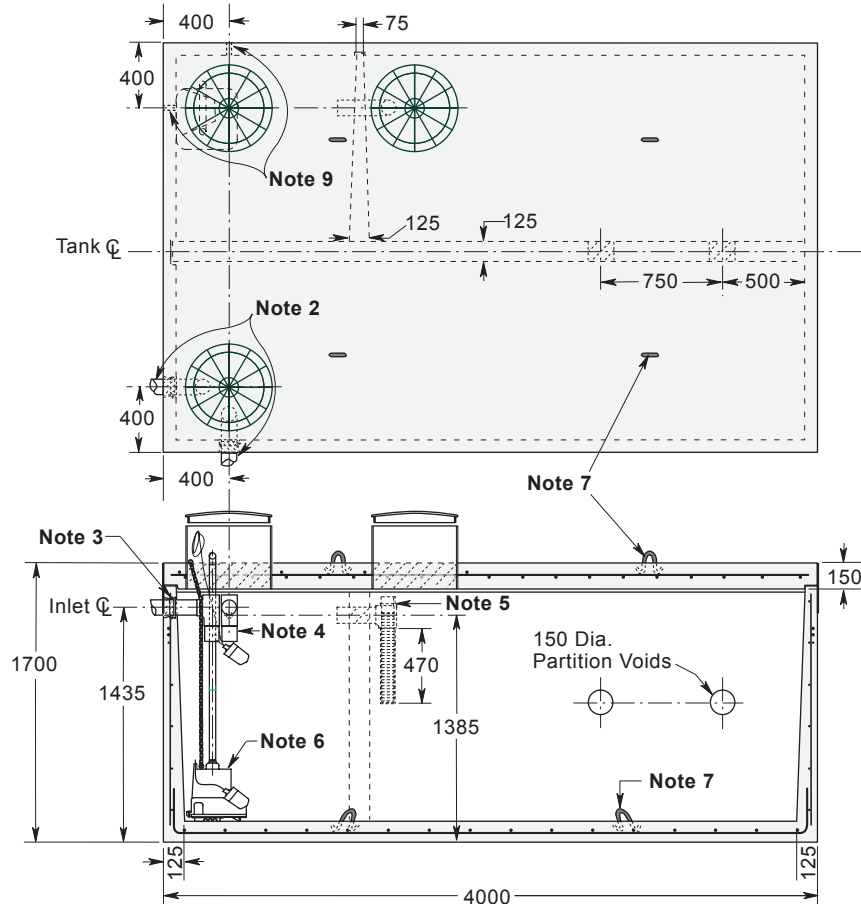
Reinforcing: 10 M bars at 250 mm centres each way in walls; horizontally in partition.
15 M bars at 200 mm centres each way in top slab.
15 M bars at 250 mm centres each way in floor.
Four extra 15 M bars around each roof access opening.
Minimum cover over reinforcing steel - 25 mm.

Actual Capacity: Septic Chambers - 8,080 Litres To Invert of Outlet
Pump Chambers - 1,380 Litres to Invert of Outlet

Weight: Top Slab 3760 kg
Tank Section 9075 kg
Total 12,705 kg

NOTES

- Standard access openings are 510 mm I. D. Poly Riser Rings 300 mm in height in two places. Each riser ring comes with a gasketed cover with two folding recessed 'T' handles. Optional 150 & 300 mm high grade rings can be added to suit grade elevation and meet the Ontario Building Code requirements 8.2.2.2 (10) and 8.6.2.1 (3).
- Optional inlet locations - 2 places.
- Flexible watertight inlet pipe connector accommodates 100 mm diameter PVC pipe.
- Inlet baffle is 100 mm PVC 'TY' fitting. It is supplied loose and meant to be cemented by the contractor to the inlet pipe.
- Outlet Baffle with NSF certified effluent filter for flow rates at 5600 litres per day; installed at the factory.
- 1/3 HP heavy duty effluent pump.
- Top slab/bottom section lifting points four places.
- Primer and Mastic Band are supplied with the tank for application to the external surface of the tank over the joint between the top slab and bottom section. This band is to be applied by the installing contractor.
- 40 mm diameter couplling caxt into wall for connection of force main - 2 optional locations.



* Commensurate with a 1 Metre burial over the top slab in firm soil away from any area of vehicular traffic.

For recommended installation procedures refer to Wilkinson Installation Guidelines.

WARNING ! IMPROPER INSTALLATION ESPECIALLY IN UNSTABLE SOILS CAN RESULT IN THE STRUCTURAL FAILURE OF THIS PRODUCT