

11,000 LITRE SINGLE COMPARTMENT PRECAST SEPTIC TANK MODEL S10.8SS

WILKINSON HEAVY PRECAST LIMITED

DUNDAS, ONTARIO

905-628-5611

www.wilkinsonheavyprecast.com

CONSTRUCTION DETAILS *

Concrete: 35 MPa at 28 Days, 5 to 8% Air Entrainment.

Reinforcing: 10 M bars at 200 mm centres each way in walls and floor.
15 M bars at 200 mm centres each way in top slab.
Four extra 15 M bars around roof access opening.
Minimum cover over reinforcing steel - 25 mm.

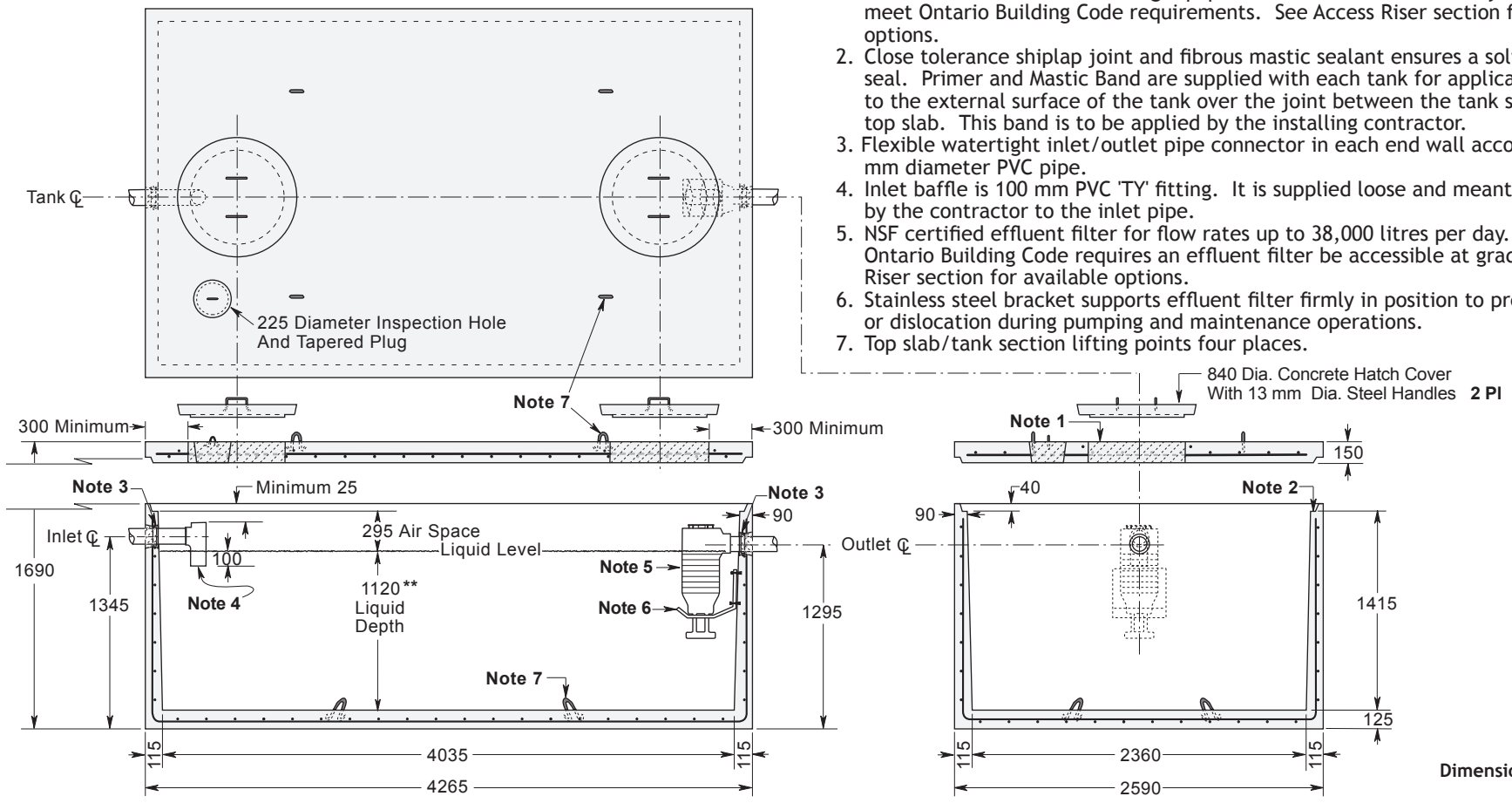
Weight:

Top Slab	4050 kg
Tank Section	8080 kg
Total	12,130 kg

Actual Capacity: 9700 Litres Per Vertical Metre.
13,725 Litres to Underside of Roof Slab.
10,865 Litres to Invert of Outlet.

NOTES

1. Large 685 mm diameter roof access openings facilitate tank and filter maintenance. Please note that each cover weighs approximately 125 kg and must be handled only with suitable mechanical lifting equipment. Access extensions may be required to meet Ontario Building Code requirements. See Access Riser section for available options.
2. Close tolerance shiplap joint and fibrous mastic sealant ensures a solid watertight seal. Primer and Mastic Band are supplied with each tank for application to the external surface of the tank over the joint between the tank section and the top slab. This band is to be applied by the installing contractor.
3. Flexible watertight inlet/outlet pipe connector in each end wall accommodates 100 mm diameter PVC pipe.
4. Inlet baffle is 100 mm PVC 'TY' fitting. It is supplied loose and meant to be cemented by the contractor to the inlet pipe.
5. NSF certified effluent filter for flow rates up to 38,000 litres per day. Note that the Ontario Building Code requires an effluent filter be accessible at grade. See Access Riser section for available options.
6. Stainless steel bracket supports effluent filter firmly in position to prevent damage or dislocation during pumping and maintenance operations.
7. Top slab/tank section lifting points four places.



Dimensions in mm
N.T.S.

* Commensurate with a 1.5 Metre burial over the top slab in firm soil away from any area of vehicular traffic.

** PLEASE NOTE: While this tank conforms to the requirements of CSA-B66 for a septic tank the working liquid depth is less than the 1200 mm required by the Ontario Building Code and should be used only where rock or high ground water levels exist. OBC 8.2.2.3 (8).

For recommended installation procedures refer to Wilkinson Installation Guidelines and Lifting and Assembly Instructions.

WARNING ! IMPROPER INSTALLATION ESPECIALLY IN UNSTABLE SOILS CAN RESULT IN THE STRUCTURAL FAILURE OF THIS PRODUCT