

10,000 LITRE TWO COMPARTMENT PRECAST SEPTIC TANK MODEL S10S

WILKINSON HEAVY PRECAST LIMITED

DUNDAS, ONTARIO

905-628-5611

www.wilkinsonheavyprecast.com

CONSTRUCTION DETAILS *

Concrete: 35 MPa at 28 Days, 5 to 8% Air Entrainment.

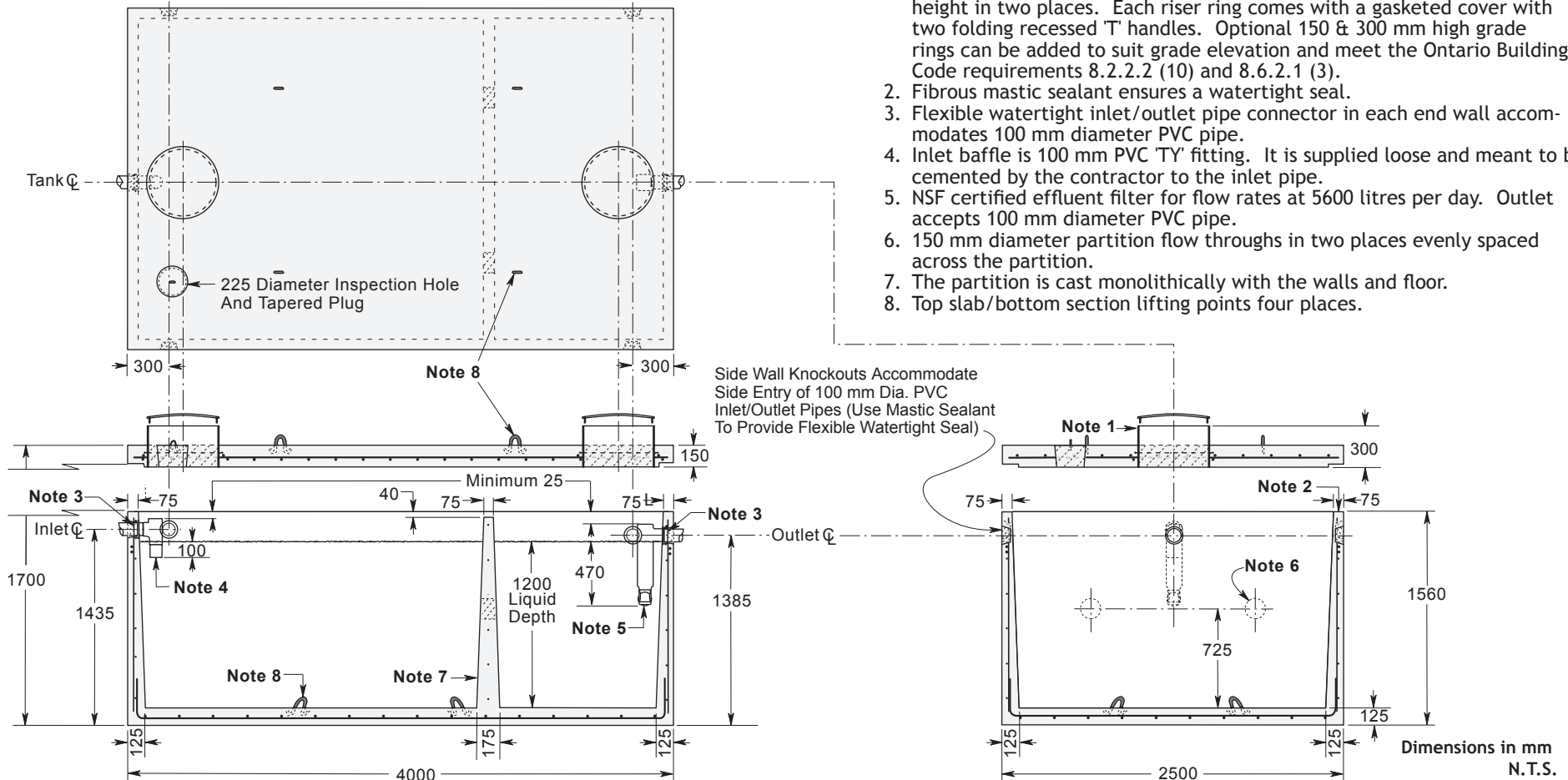
Reinforcing: 10 M bars at 250 mm centres each way in walls; horizontally in partition.
 15 M bars at 200 mm centres each way in top slab.
 15 M bars at 250 mm centres each way in floor.
 Four extra 15 M bars around each roof access opening.
 Minimum cover over reinforcing steel - 25 mm.

Weight: Top Slab 3760 kg
 Tank Section 8750 kg
 Total 12,140 kg

Actual Capacity: 8437 Litres Per Vertical Metre.
 12,107 Litres to Underside of Roof Slab.
 10,124 Litres to Invert of Outlet.

NOTES

1. Standard access openings are 510 mm I. D. Poly Riser Rings 300 mm in height in two places. Each riser ring comes with a gasketed cover with two folding recessed 'T' handles. Optional 150 & 300 mm high grade rings can be added to suit grade elevation and meet the Ontario Building Code requirements 8.2.2.2 (10) and 8.6.2.1 (3).
2. Fibrous mastic sealant ensures a watertight seal.
3. Flexible watertight inlet/outlet pipe connector in each end wall accommodates 100 mm diameter PVC pipe.
4. Inlet baffle is 100 mm PVC 'TY' fitting. It is supplied loose and meant to be cemented by the contractor to the inlet pipe.
5. NSF certified effluent filter for flow rates at 5600 litres per day. Outlet accepts 100 mm diameter PVC pipe.
6. 150 mm diameter partition flow throughs in two places evenly spaced across the partition.
7. The partition is cast monolithically with the walls and floor.
8. Top slab/bottom section lifting points four places.



* Commensurate with a 1 Metre burial over the top slab in firm soil away from any area of vehicular traffic.

For recommended installation procedures refer to Wilkinson Installation Guidelines.

WARNING ! IMPROPER INSTALLATION ESPECIALLY IN UNSTABLE SOILS CAN RESULT IN THE STRUCTURAL FAILURE OF THIS PRODUCT