

17,000 LITRE SINGLE COMPARTMENT PRECAST SPETIC TANK MODEL S17SS

WILKINSON HEAVY PRECAST LIMITED

DUNDAS, ONTARIO

1-800-263-8503

CONSTRUCTION DETAILS *

Concrete: 35 MPa at 28 Days, 5 to 8% Air Entrainment.

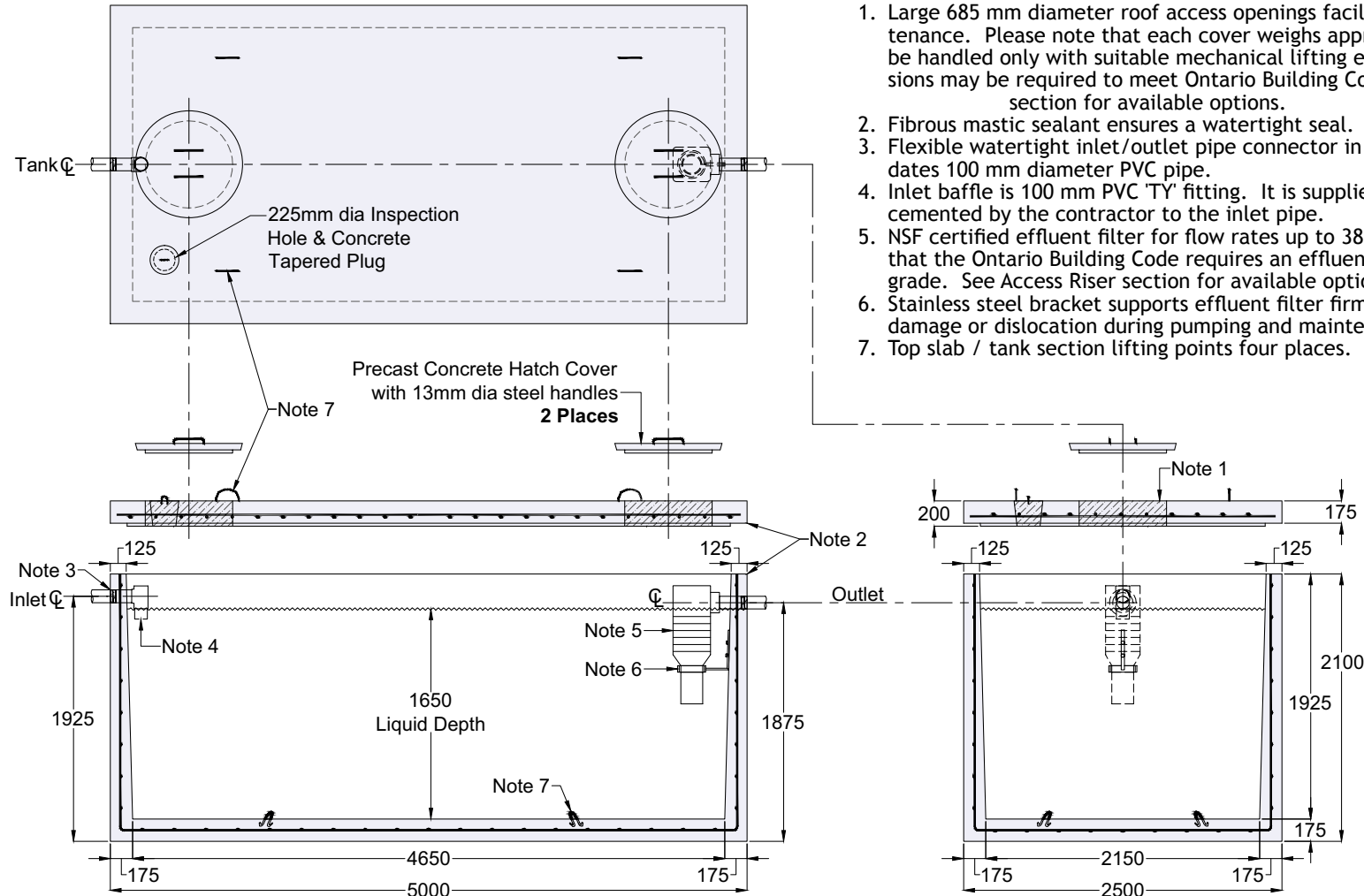
Reinforcing: 10 M bars at 250 mm centres each way in floor and walls.
15 M bars at 200 mm centres each way in top slab.
Eight extra 15 M bars around roof access opening.
Minimum cover over reinforcing steel - 25 mm.

Weight: Top Slab 6000 kg
Tank Section 15,300 kg
Total 21,300 kg

Actual Capacity: 10,340 Litres Per Vertical Metre.
19,646 Litres to Underside of Roof Slab.
17,061 Litres to Invert of Outlet

NOTES

1. Large 685 mm diameter roof access openings facilitate tank and filter maintenance. Please note that each cover weighs approximately 125 kg and must be handled only with suitable mechanical lifting equipment. Access extensions may be required to meet Ontario Building Code requirements. See section for available options.
2. Fibrous mastic sealant ensures a watertight seal.
3. Flexible watertight inlet/outlet pipe connector in each end wall accommodates 100 mm diameter PVC pipe.
4. Inlet baffle is 100 mm PVC 'TY' fitting. It is supplied loose and meant to be cemented by the contractor to the inlet pipe.
5. NSF certified effluent filter for flow rates up to 38,000 litres per day. Note that the Ontario Building Code requires an effluent filter be accessible at grade. See Access Riser section for available options.
6. Stainless steel bracket supports effluent filter firmly in position to prevent damage or dislocation during pumping and maintenance operations.
7. Top slab / tank section lifting points four places.



Dimensions in mm
N.T.S.

*Product designed for a Maximum 1 Metre burial over the top slab in firm soil away from any area of vehicular traffic.

For recommended installation procedures refer to Wilkinson