

50,000 LITRE SINGLE COMPARTMENT PRECAST SEPTIC TANK MODEL S50SS

WILKINSON HEAVY PRECAST LIMITED

DUNDAS, ONTARIO

905-628-5611

www.wilkinsonheavyprecast.com

CONSTRUCTION DETAILS *

Concrete: 35 MPa at 28 Days, 5 to 8% Air Entrainment.

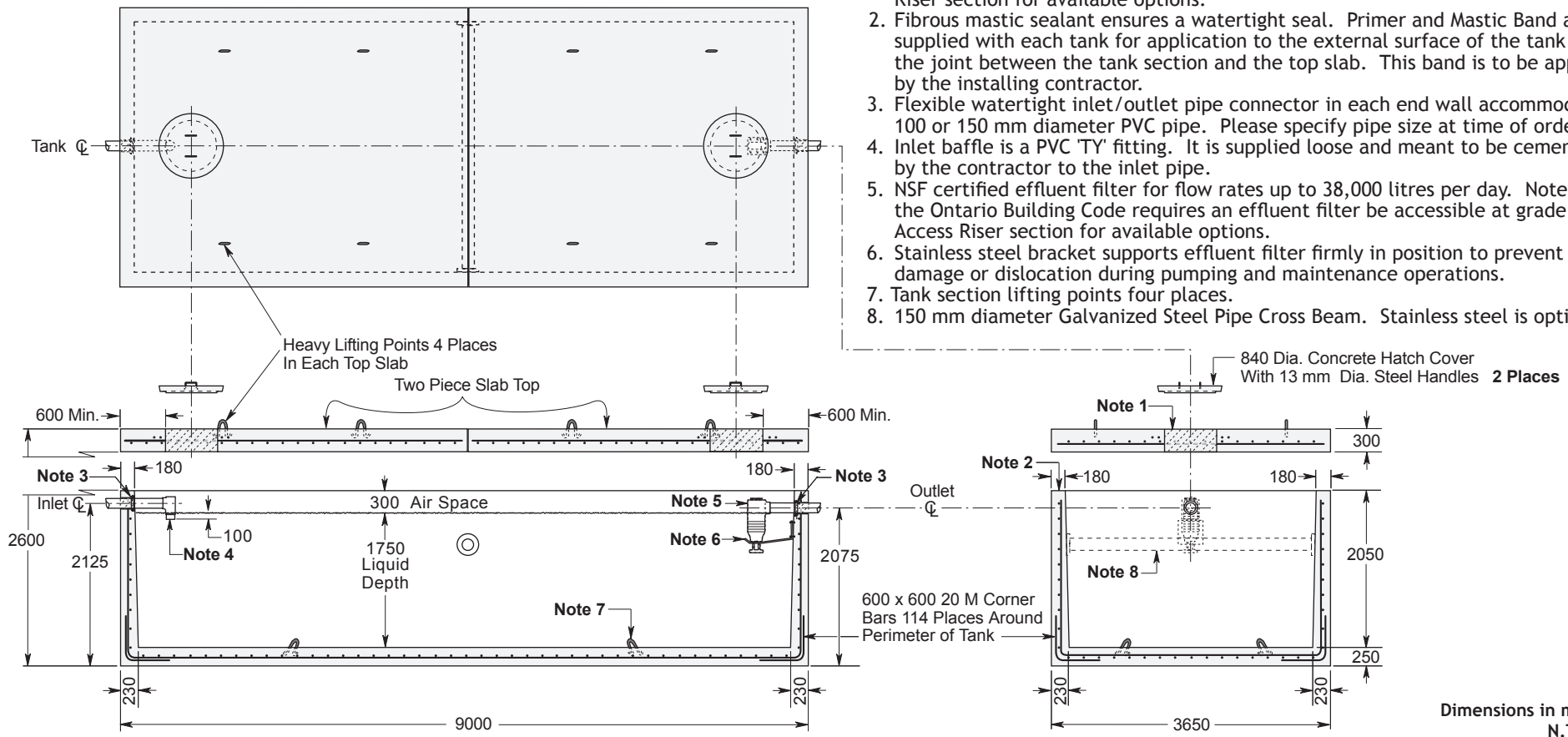
Reinforcing: 20 M Bars at 200 mm centres each way in walls and floor.
600 x 600 20 M corner bars at 200 mm centres around bottom perimeter of tank. (114 places)
20 M Bars at 200 mm centres each way in top slabs.
Eight extra 15 M bars around each roof access opening.
Minimum cover over reinforcing steel - 25 mm.

Weight: Top Slabs 24,400 kg (12,200 kg each)
Tank Section 48,000 kg
Total 72,400 kg

Actual Capacity: 27,832 Litres Per Vertical Metre.
57,056 Litres to Underside of Roof Slab.
48,706 Litres to Invert of Outlet

NOTES

1. Large 685 mm diameter roof access openings facilitate tank and filter maintenance. Please note that each cover weighs approximately 125 kg and must be handled only with suitable mechanical lifting equipment. Access extensions may be required to meet Ontario Building Code requirements. See Access Riser section for available options.
2. Fibrous mastic sealant ensures a watertight seal. Primer and Mastic Band are supplied with each tank for application to the external surface of the tank over the joint between the tank section and the top slab. This band is to be applied by the installing contractor.
3. Flexible watertight inlet/outlet pipe connector in each end wall accommodates 100 or 150 mm diameter PVC pipe. Please specify pipe size at time of order.
4. Inlet baffle is a PVC 'TY' fitting. It is supplied loose and meant to be cemented by the contractor to the inlet pipe.
5. NSF certified effluent filter for flow rates up to 38,000 litres per day. Note that the Ontario Building Code requires an effluent filter be accessible at grade. See Access Riser section for available options.
6. Stainless steel bracket supports effluent filter firmly in position to prevent damage or dislocation during pumping and maintenance operations.
7. Tank section lifting points four places.
8. 150 mm diameter Galvanized Steel Pipe Cross Beam. Stainless steel is optional.



Dimensions in mm
N.T.S.

* Commensurate with a 1.8 Metre burial over the top slab in firm soil away from any area of vehicular traffic.

For recommended installation procedures refer to Wilkinson Installation Guidelines and Lifting and Assembly Instructions.

WARNING ! IMPROPER INSTALLATION ESPECIALLY IN UNSTABLE SOILS CAN RESULT IN THE STRUCTURAL FAILURE OF THIS PRODUCT