

PRECAST 3 x 4 METRE RECTANGULAR MANHOLE

WILKINSON HEAVY PRECAST LIMITED

DUNDAS, ONTARIO

905-628-5611

www.wilkinsonheavyprecast.com

CONSTRUCTION DETAILS

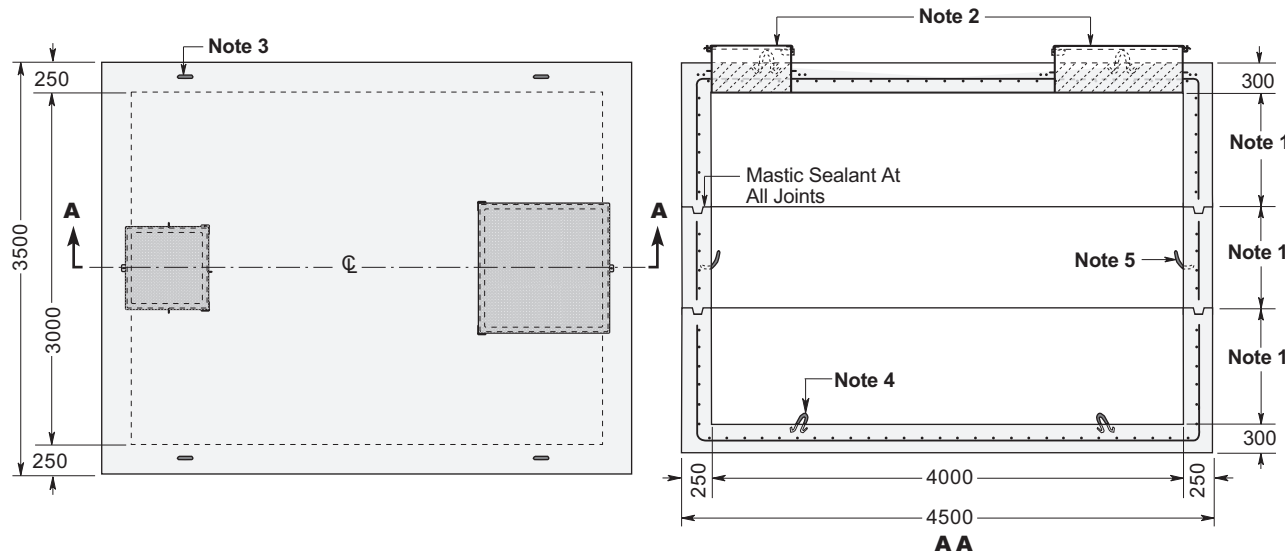
Concrete: 35 MPa at 28 Days, 5 to 8% Air Entrainment. Precast concrete materials and construction conforms with CSA A23.4-00

Reinforcing:* 10 M bars at 150 mm centres each way in roof, walls and floor. Eight extra 15 M bars around roof access opening. Minimum cover over reinforcing steel - 25 mm.

Weight: Base/Roof Slab 11,500 kg
Walls 9200 kg/Vertical Metre

Calculation for Pump

Chamber Capacity: 12,000 Litres/Vertical Metre



NOTES

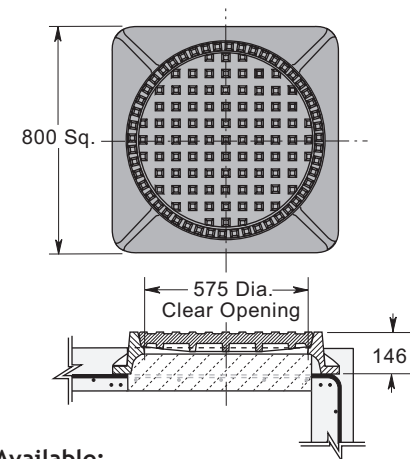
1. Available in heights of 1 and 1.5 Metres
2. Drip proof and lockable frame and cover shown cast into top slab. Standard construction is 5 mm low carbon steel plate, hot dip galvanized after fabrication. This design is also available in aluminum or stainless steel.
3. Top section lifting points four places.
4. Bottom section lifting points four places.
5. Lifting points in walls four places.

* Reinforcing detail can be customized to suit conditions of installation.

Dimensions in mm
N.T.S.

OPTIONAL COVERS - Cast Into Top Slab

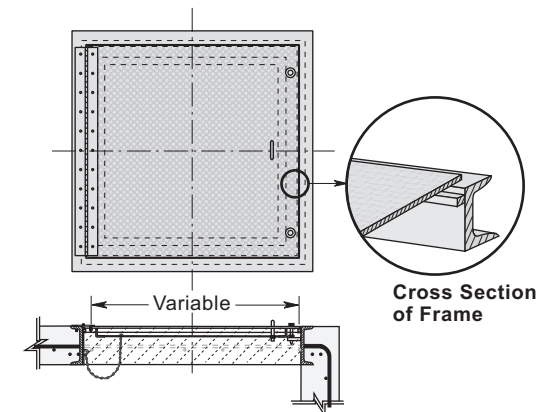
STANDARD CAST IRON FRAME and COVER
OPSD Ref. 401.01



Also Available:

Bolted and Gasketed Frame and Cover - OPSD Ref. 401.03 and Locking Cover - OPSD Ref. 401.06

FLUSH TYPE FRAME and COVER



Available in Galvanized Steel, Stainless Steel or Aluminum